

SCAMIT CODE: None

Date Examined: 20 December 1997

Vouchered by: Megan Lilly and  
Dean Pasko

SYNONOMY: Leptoplanidae sp SD1 CSDMWWD

LITERATURE: Hyman, L.H. 1951. The Invertebrates: Platyhelminthes and Rhyncocoela, the Acoelomate Bilateria. Volume II. United States: McGraw-Hill Book Company, Inc.

DIAGNOSTIC CHARACTERS:

Small species (2 - 3 mm total length).

Two large eyes are located anteriorly--visible without clearing.

Body coloration: orange-brown pigment patches scattered over a mostly cream colored body.

Pharynx smooth, not convoluted.

Intromittent organ with stylet visible at posterior end--visible on cleared specimens.

RELATED SPECIES:

This species is easily identified by the characters described above.

OTHER COMMENTS:

Lack of experience with this group of flatworms precludes further identification at this time.

DISTRIBUTION:

San Diego, CA., off San Diego Bay, 30 m.

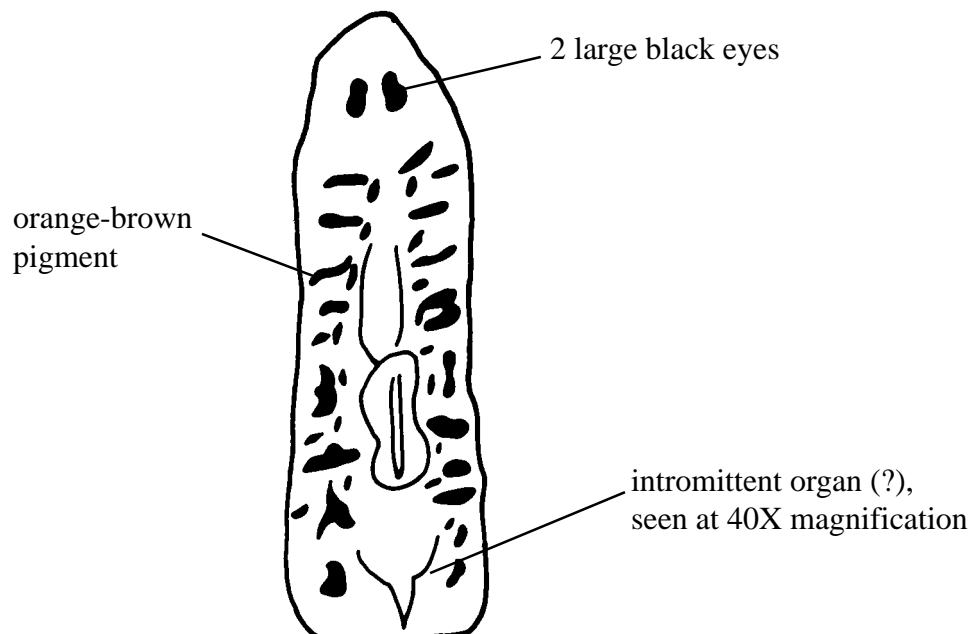


Figure 1 Rhabdocoela sp A.

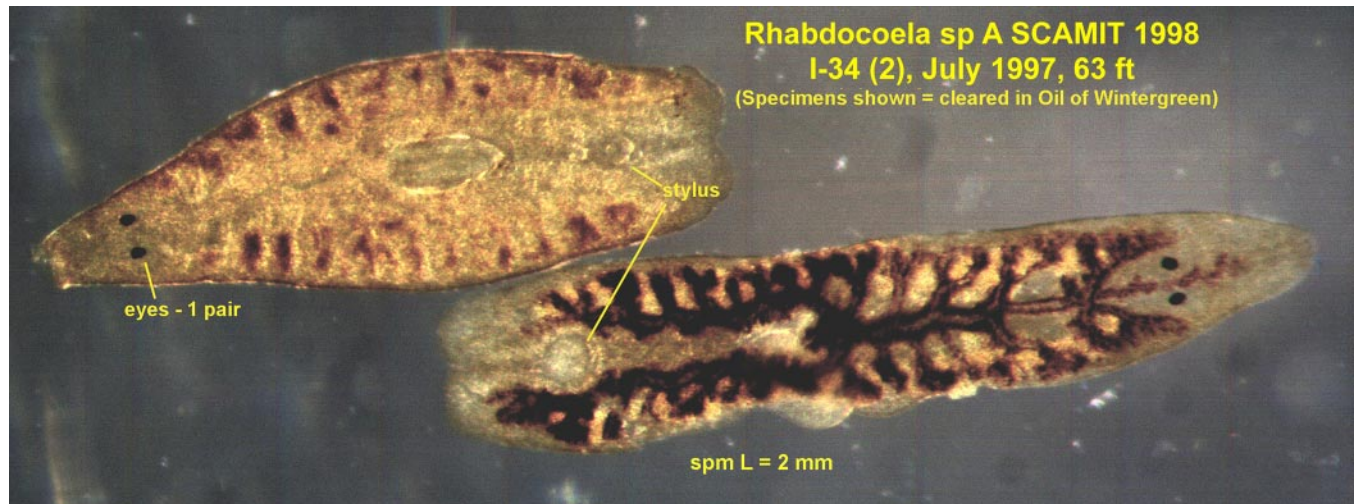


Figure 2. Rhabdocoela sp A. Two specimens, dorsal view, cleared showing position of single pair of black eyes and stylet apparatus.

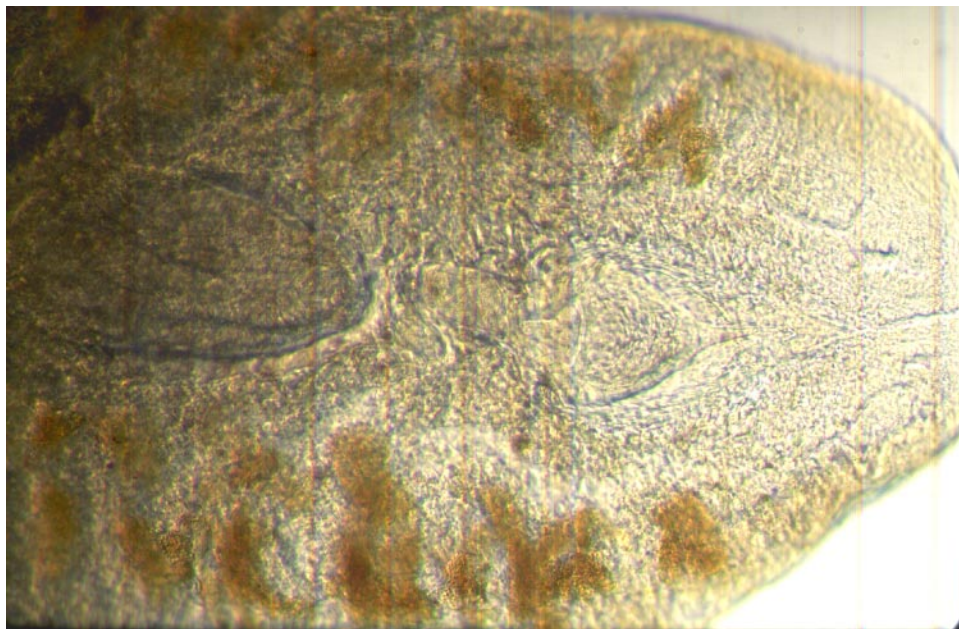


Figure 3. Rhabdocoela sp A. Stylet apparatus @ 100x. Specimen from I-34 (2), July 1997, 63 ft