

SCAMIT CODE: None

Date Examined: 27 October 1995

Voucher By: Dean Pasko

SYNONYMY: Polystylifera sp. SD 1 of CSDMWWD

LITERATURE: Coe, W. R., 1940. Revision of the nemertean fauna of the Pacific coasts of North, Central, and northern South America. Allan Hancock Pacific Expeditions. 2 No. 13: 247-323.

Gibson, R. 1982. Nemertea. In: Synopsis and Classification of Living Organisms. Vol. 1. PP: 823-846.

**DIAGNOSTIC CHARACTERS:**

1. Generally a large, thick bodied, dorso-ventrally flattened hoplonemertean with a large terminal proboscis pore. Body thickest in middle and tapering laterally to form ribbon-like lateral margins.
2. Color usually cream to light brown with mid-dorsal longitudinal band formed by fading of brown coloration laterally.
3. Eyes absent.
4. Cerebral ganglia large.

**RELATED SPECIES AND CHARACTER DIFFERENCES:**

An accurate affiliation of this species with described species (or higher taxa) is not possible at this time. The species superficially resembles a uniporian nemertean (Enopla: Hoplonemertea: Polystylifera: Uniporidae) because of the large atrium-like opening forming the proboscis pore, its large size, the appearance of a simple stomach lacking appendages, and the absence of eyes; however, the author's unfamiliarity with this group precludes assignment of this species to any lower taxon.

**DEPTH RANGE:** 60 m

**DISTRIBUTION:** Point Loma, California in sandy and silty sand sediments.

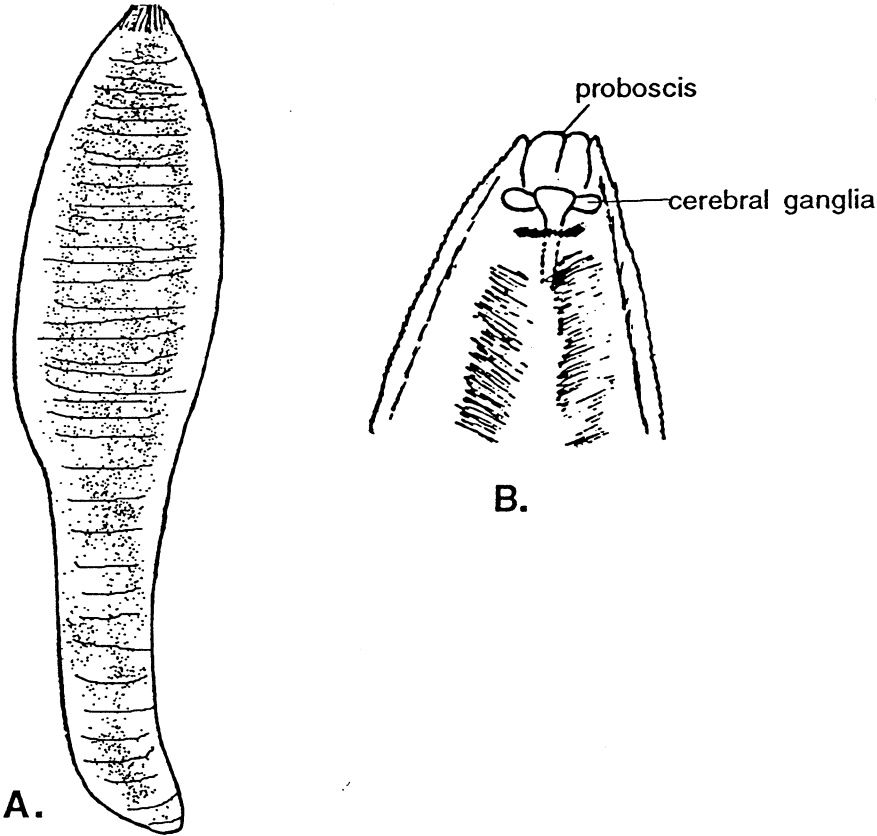


Figure 1. Enopla sp. A SCAMIT : A. whole animal, dorsal view; B. anterior end cleared, dorsal view.