

Hoploneurtea sp SD 3

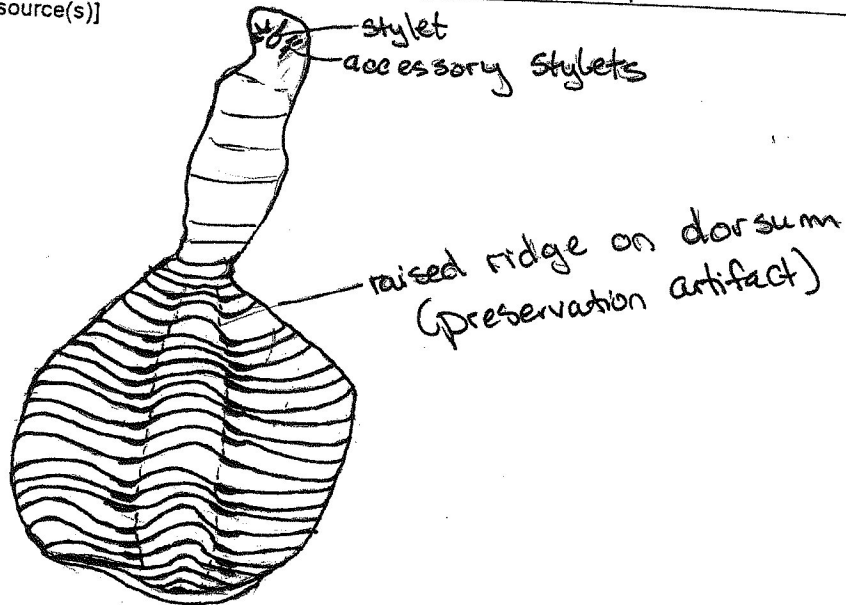
Species: (= *Monostylifera* sp SD 1)

name invalid, already in use

Taxon: Nemertea

Date: 3/26/98

Additional Illustrations: [cite source(s)]



close up of stylet

- stylet long in comparison to basis (app 2X)
- basis appears "egg-shaped" or rounded
- 2 accessory pouches, each w/ 4 stylets
- eyes not apparent

- By M. Lilly

vouchered: MAIN X-36

Distribution:

Pt. Loma: [station/date] 2168, 7.22.97, 290'

Geographic: [cite source(s)]

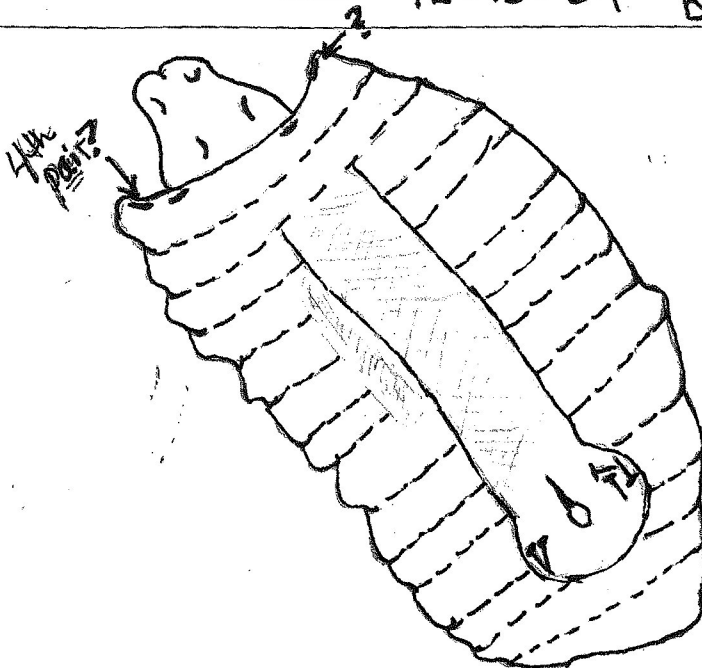
Habitat:

Species: *Hoploneurtea* sp 503

Taxon: Nemeretea
Date: 12-15-09

by: M. Lilly

Additional Illustrations: [cite source(s)]



- For this illustration, animal is cleared and viewed at 10X
- Has 3 visible pairs of eyes and possibly a 4th pair (questionable)
- Small, "egg-shaped" basis, with accessory stylets present
- Animal is thick and muscular and contracted, creating folds/ridges in body wall.
- Gestalt is unusual for Eneplan. Relatively flat and rounded, not tubular.
- Collection info: Regional Station 2676, 15 July 09, 95m

Vouchered - MAIN - X-36

Distribution:

Pt. Loma: [station/date]

Geographic: [cite source(s)]

Habitat: