

Date Examined: 14 August 2011
Voucher Sheet By: Tony Phillips

SYNONYMY: Monostylifera sp. SD2 of Point Loma

LITERATURE:

Gibson, R. 1986. Redescription and taxonomic reappraisal of *Nemertopsis actinophila* Burger, 1904 (Nemertea: Hoplonemertea: Monostylifera). *Bulletin of Marine Science*, 39 (1):42-60.

DIAGNOSTIC CHARACTERS:

1. Body white, thin, elongate, generally of uniform width; head with blunt anterior end (the drawing in Gibson, 1986, shows a rounded, slightly wider head).
2. Proboscis sheath extends approximately 30% length of body.
3. Basis and stylet of approximate equal length (s/b ratio 1.0) (two specimens observed), basis is cylindrical shaped with the base slightly rounded, no accessory sacs observed, but reported to have as many as eight accessory stylets.
4. Eyes not visible unless cleared; cleared specimens with two pairs of brick-red eyes; the anterior pair are distinct and found near the tip of the head, the posterior are smaller, more wider set, being found posterior to brain lobes along cerebral ganglia.
5. Size of specimens observed: 12 – 45 mm.

RELATED SPECIES AND CHARACTER DIFFERENCES:

This species being so elongate and thin is very distinctive. The two pairs of brick-red eyes, their position in the head and the posterior pair being wider are also distinctive for this species. Though reported as a commensal of actinarians, all specimens were found in infaunal samples without any actinarians.

DEPTH RANGE: Intertidal to 150 meters

DISTRIBUTION: San Diego to Goleta

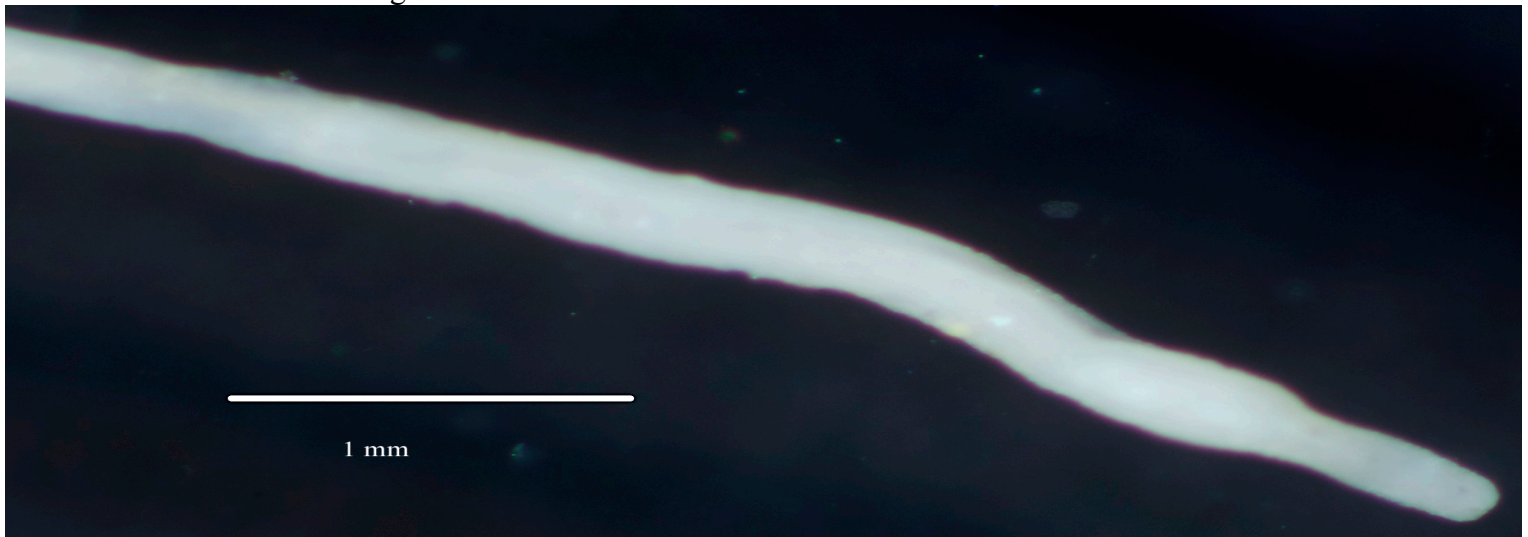


Figure 1. *Cryptonemertes actinophila* (uncleared) 10 mm. Santa Monica Bay, A2, 16 m, 7 July 2007.

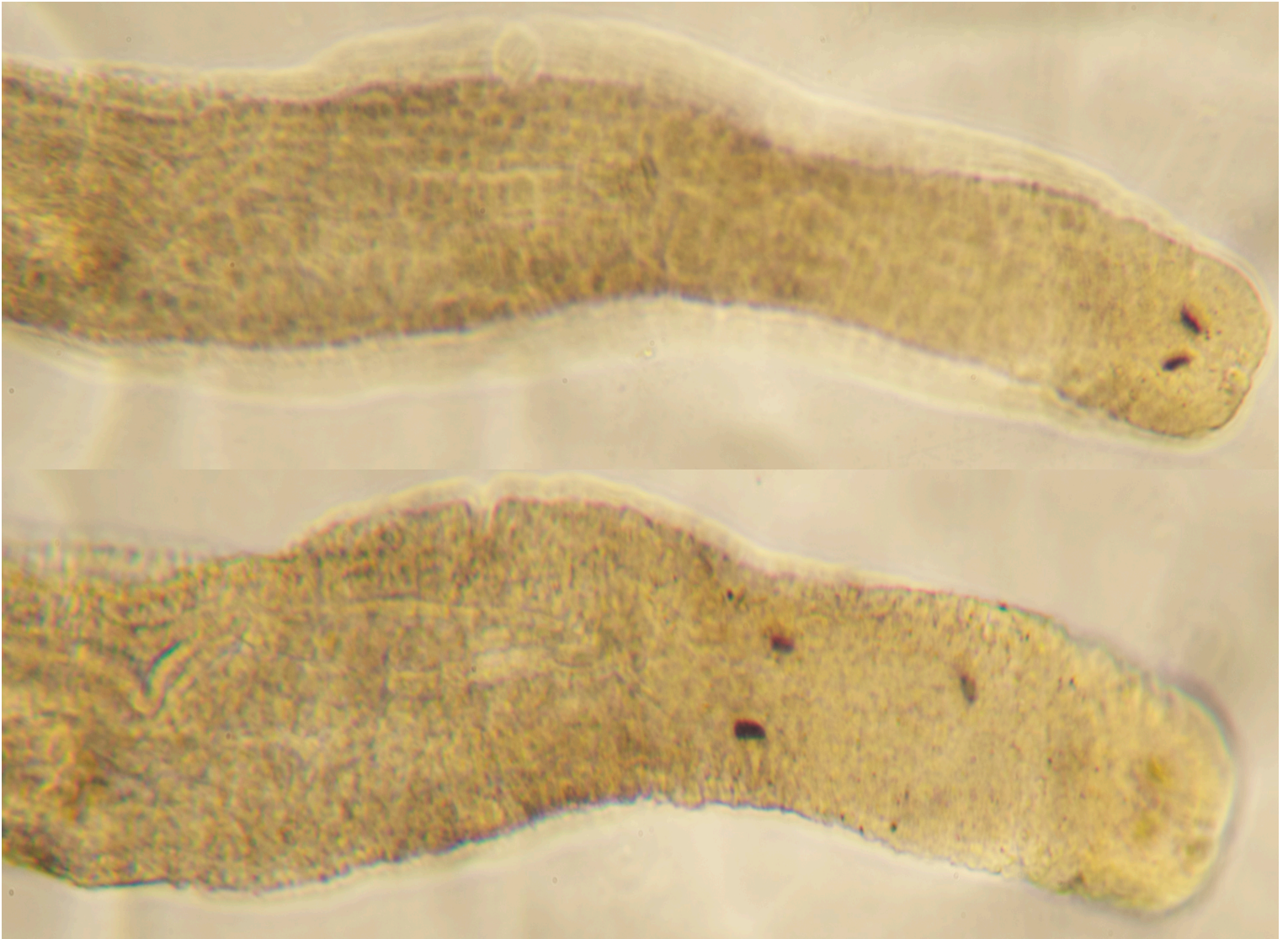


Figure 2. *Cryptonemertes actinophila* (cleared). Separate pictures of anterior and posterior pair of eyes due to difference in depth within tissue.