



CITY OF SAN DIEGO VOUCHER SHEET

Species: Amphiporidae sp SD1

Authority:

Common Synonyms:

Hoplonemertea sp SD1

Taxon: Nemertea: Enopla: Monostyliferoidea

Date: 17 May 1999

By: Dean Pasko

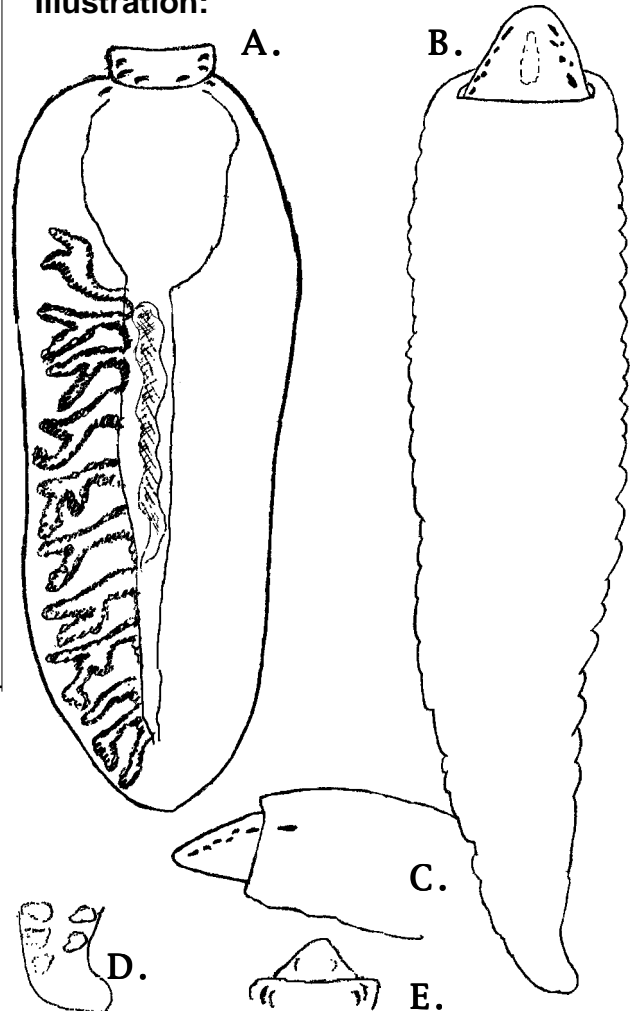
Voucher Specimen(s):

Station	Date	Storage Location	Voucher#
I-23	7/22/97		67 ft
I-15	1/25/99		101 ft
2153	7/16/97		44 ft
I-34	7/16/97		63 ft

Characters:

- (1) Large, broad, thick Enoplan
- (2) 3 - 5 pairs of red, crescent shaped ocelli present
- (3) Proboscis and proboscis pore large, and heavily papillated
- (4) Proboscis sheath appears to extend 2/3 to 3/4 the length of the body
- (5) Stylet apparatus present; stylus long and thin; basis not yet observed; two accessory pouches with 3 stylets each (1 spm)
- (6) Intestinal diverticula present, and running the length of the body.
- (7) Large cerebral ganglia

Illustration:



Figures: (A) whole animal, cleared with tip of head retracted. (B) whole specimen with head extended, showing position of eyes, and proboscis pore. (C) lateral view of specimen from Fig. B. (D) posterior end of same specimen showing posterior position of ovaries. (E) dorsal view, anterior portion of head showing position of eyes.

Related Species:

Differs from *Hoplonemertea* sp B of Phillips, or *Hoplonemertea* sp A of Paquette in having more ocelli, 3-4 pairs versus 2 pairs in each of the others.

Differs from *Enopla* sp A SCAMIT the presence of numerous ocelli and the absence of an atrium like proboscis pore.

Comments:

External morphology highly variable. Thickness and size of the animal is quite distinctive. Stylet apparatus found in one specimen.

References:

- Gibson, R. 1982a. Nemertea. In *Synopsis and Classification of Living Organisms*. ed. S.P. Parker, McGraw-Hill, New York 1, 823-46.
- Gibson, R. 1982b. *British Nemerteans: Keys and notes for the Identification of Species*. Cambridge University Press. 212 pp.

(over)

Species: Amphiporidae sp SD1

Taxon: Nemertea: Enopla: Monostyliferoidea

Date: 17 May 1999

Additional Illustrations:



Fig. A. Specimens with tip of head extended. (from station 2153)

Fig. B. specimen with tip of head retracted. Specimen 8mm X 4mm. (from station I-15)



Distribution—

Pt. Loma: Imperial Beach, CA

Geographic: San Diego, CA

Habitat: Shallow sandy sediments