

Anopla sp. C SCAMIT 1995
Group: Nemertea: Anopla

SCAMIT Vol. 14, No. 8

SCAMIT CODE: None

Date Examined: 8 November 1995
Voucher By: Dean Pasko

SYNONYMY: Anopla sp. SD2 of CSDMWWD

LITERATURE: Coe, W. R., 1940. Revision of the nemertean fauna of the Pacific coasts of North, Central, and northern South America. Allan Hancock Pacific Expeditions. 2 No. 13: 247-323.

Blake, J. A. and A. L. Lissner, 1993. Taxonomic Atlas of the Benthic Fauna of the Santa Maria Basin and Western Santa Barbara Channel. Volume 1. Introduction, Benthic Ecology, Oceanography, Platyhelminthes and Nemertea

DIAGNOSTIC CHARACTERS:

1. Body light colored (cream to tan or light olive), thin, elongate and thread-like.
2. Head somewhat elongate and rounded anteriorly.
3. Mouth moderately separated from proboscis pore.
4. White band present anteriorly, just anterior to mouth.

RELATED SPECIES AND CHARACTER DIFFERENCES:

1. This species closely resembles Anopla sp. D SCAMIT in being an elongate, white, fairly featureless nemertean; however, Anopla sp. D has a mouth much separated from proboscis pore, a head that is tapered anteriorly, and a white body without a white band near the mouth.

DEPTH RANGE: 90-120 m

DISTRIBUTION: Found off Point Loma, California in silty sediments at shelf depths.

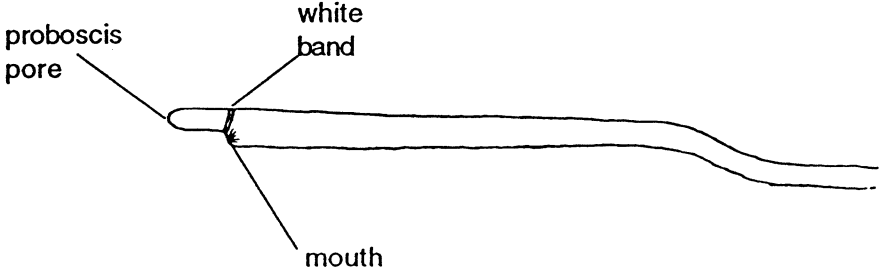


Figure 1. Anopla sp. C : A. anterior end, lateral view.