

Species: *Cerebratulus californiensis*

NODC # 4303020208

Describer: Coe, 1905

Characters:

- ① Mouth and proboscis pore separate; mouth immediately behind brain.
- ② Cephalic furrows deep; caudicle present.
- ③ Body greyish, pinkish, yellowish, buff, dark brown, reddish-brown without distinctive markings. Body margin sharp, thin.

Description: Live - 10-15 cm length; 4-5 mm width. Body long, ribbon-like. Rounded anteriorly; much flattened, with very thin margins posteriorly. Head variable in shape. Cephalic furrows moderately long, very deep. Body very fragile. ¹ Body color - pale greyish, pinkish or yellowish, buff, flesh, dark brown, greenish brown, deep red, depending on environment. ² Lateral margins thin, grey, pale, but not strikingly lighter than body color in most cases. Lateral nerves are reddish. Head sometimes with paler border along cephalic furrows. Proboscis pore subterminal; proboscis very long & slender; proboscis buff or greyish.

Ocelli absent. Cephalic glands well-developed. Cutis glands limited to outer longitudinal muscle layer. With large neurochord cells on ventral ganglia. Other sense organs not described. ³

Preserved - body shortens somewhat. Colors usually well preserved by formalin. Very fragile. Caudicle often retained. ⁴

Habitat: In mud, sandy mud or sand of bays and harbors. Intertidal and subtidal. ⁵

Range: Puget Sound to Coast of Mexico. ⁶

Comments: Hard to separate from *C. marginatus* from descriptions. Have some of Coe's slides. Need to examine possible synonymy. Have seen Trawl specimens which appear to be spawning? - SCLWR

Type Specimens:

Material examined:

SCCWRP 60 meter Palos Verdes Peninsula Survey

BLM mussel bed study 1977-78

King Harbor Stable Substrate Survey 1975

King Harbor Unstable Substrate Survey 1975, 76, 77, 78

Scripps collection

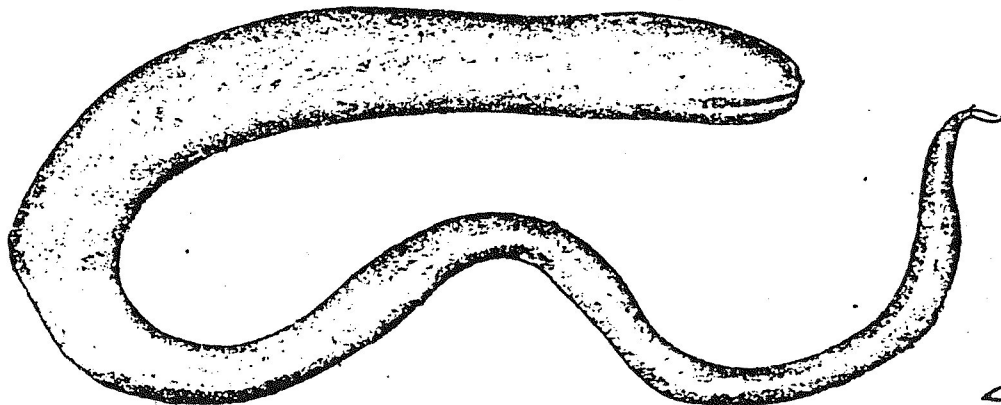
Synonyms:

References:

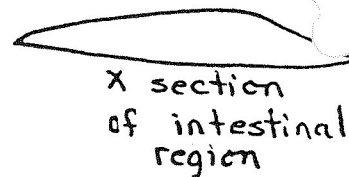
□ Coe, 1905 - original description

□ Coe, 1940 - revision

Figures:



Preserved - side view
A



X section
of intestinal
region