



CITY OF SAN DIEGO VOUCHER SHEET

Species: Procephalothrix major
 Authority: (Coe 1930)
 Common Synonyms:
Tubulanus sp.

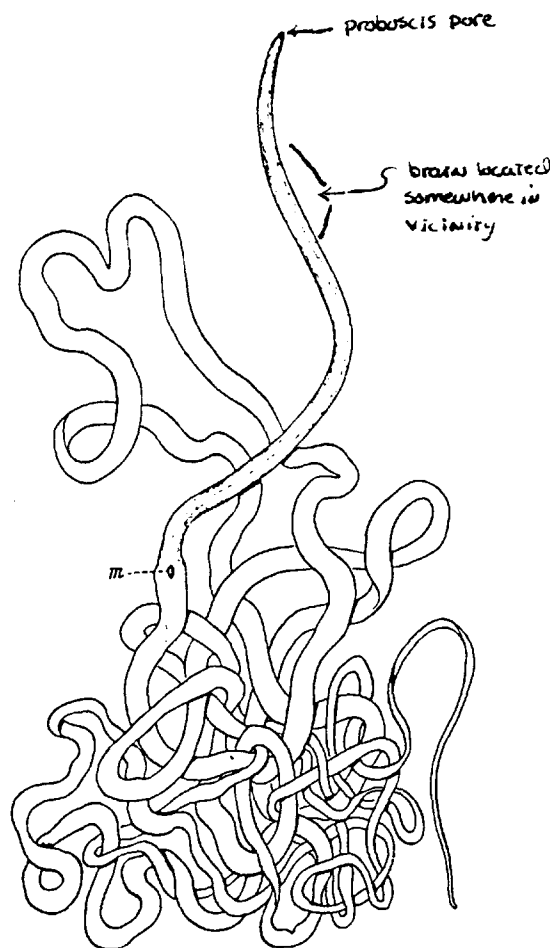
Taxon: Nemeretea
 Date: 11/3/94
 By: Dean Paoko
 Voucher Specimen(s):

Station	Date	Storage Location	Voucher#
E-140	7-20-44	Wooden Coll.	X-102

Characters: [used in lab to confirm ID]

Body long, slender, Thread-like; generally cream/white throughout
 mouth situated far behind brain (~10⁺ body widths from tip of head) (see illust →)
 Head end very narrow and elongate.
 Body usually twisted, snarled or knotted into an irregular mass.

Illustration: [cite source(s)]



Full Description: [cite source(s)]

Related Species: [include character differences]

Procephalothrix spiralis - body usually coiled into a spiral when contracted.
Tubulanus sp? - mouth much closer to anterior end (tip of head + brain - see back for comparison figs); body usually more robust; head much shorter + broad.

Comments: We have likely passed this species off as "Nemeretea" or "Tubulanus sp." It is pretty easily recognized by the lack of pigment, thin body, and elongate "snout" (distance from tip of head to mouth).

References: MacEwen, P. 1980.
 Coe, 1940.

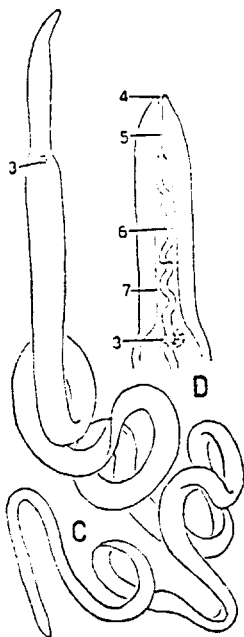
Species: Procephalothrix major

Taxon: NEMERTEA

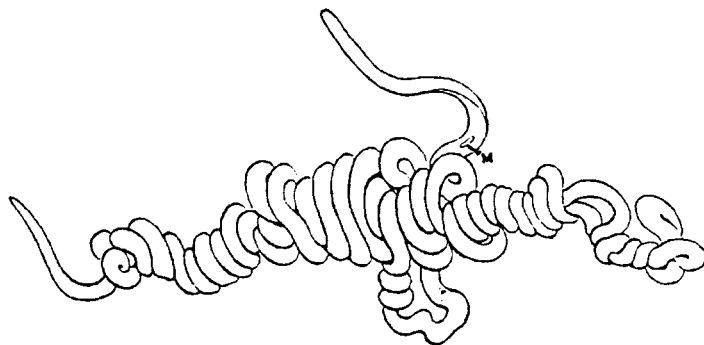
Date: 11/13/94

Additional Illustrations: [cite source(s)]

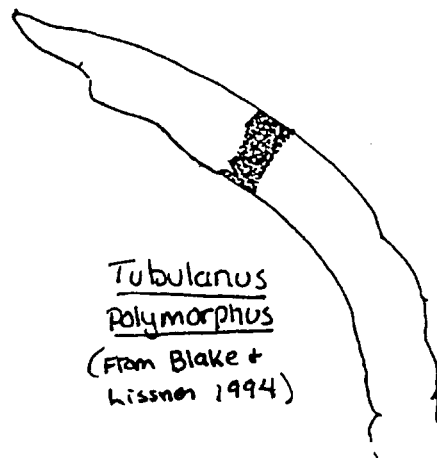
- 3 = Mouth
- 4 = Proboscis pore
- 5 = Rhynchodaeum
- 6 = Proboscis
- 7 = Proboscis sheath



Procephalothrix spiralis
(From Hymen 1951)



Procephalothrix spiralis
(From Coe 1940)



Tubularus polymorphus
(From Blake & Hissner 1994)

Distribution:

Pt. Loma: [station/date] E-14(1), 7-20-94; SCBPP STATION 1776, 7-27-94, 24 M.

Geographic: [cite source(s)] MONTANA, California TO ENSENADA, Mexico

Habitat: Beneath stones in hard sand. or clay fully exposed to surf. (Coe 1940).