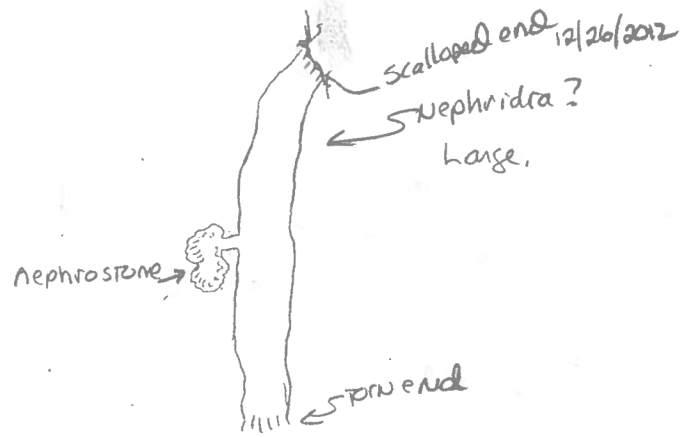
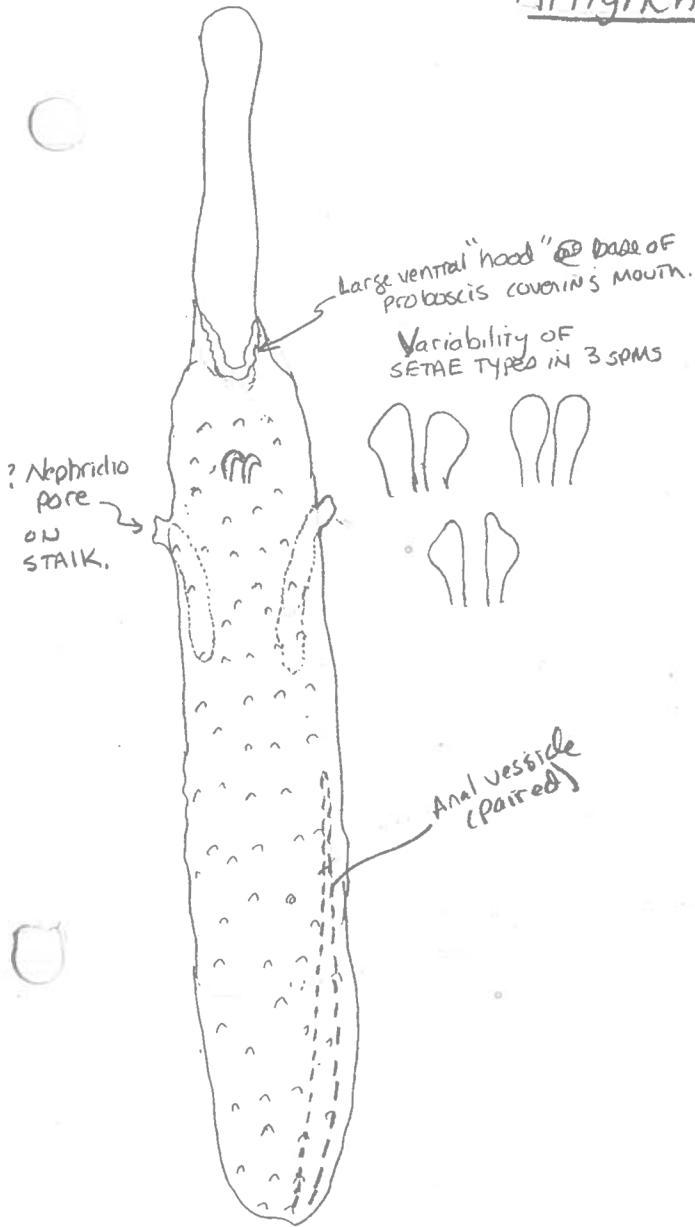


Archynchite californicus Fisher 1949

E-20 (3 spms)  
4-1-97  
317 FT.



2 Nephridia (1 pair)  
body (TRUNK) elongate  
Proboscis elongate, narrow. - may =  
1/2 length of TRUNK.  
Anal vesicles small / inconspicuous\*  
muscle bands NOT visible in body  
wall

\* THIS CONFLICTS with Family definition

Differences from Listriobolus

- ① elongate rather round TRUNK
- ② 1 pair of nephridia (large) rather than 4 pair of small nephridia.
- ③ setae closely set and expanded distally - vs well separated and NOT expanded (P)
- ④ ~~external nephridiopore (?) situated on short "stalk" vs no stalk.~~
- ⑤ Anal vesicle elongate, ~ 1/2 body length.

SEE: MMS Atlas vol. 14, p. 73.

Stephens + Edmonds, 1972, The phyla Sipuncula + Echiura pp. 406.