

KEY TO REGULAR URCHINS

Jack Q. Word

REGULAR URCHINS  
Echinodermata:Echinoidea

Family Centrechinidae  
Centrostephanus coronatus (Verrill 1867)

Family Arbaciidae  
Arbacia incisa (Blainville; ?Gmelin)

Family Echinidae  
Lytechinus pictus (Verrill 1867)

Family Strongylocentrotidae  
Allocentrotus fragilis (Jackson 1912)  
Strongylocentrotus franciscanus (A. Agassiz 1863)  
Strongylocentrotus purpuratus (Stimpson 1857)

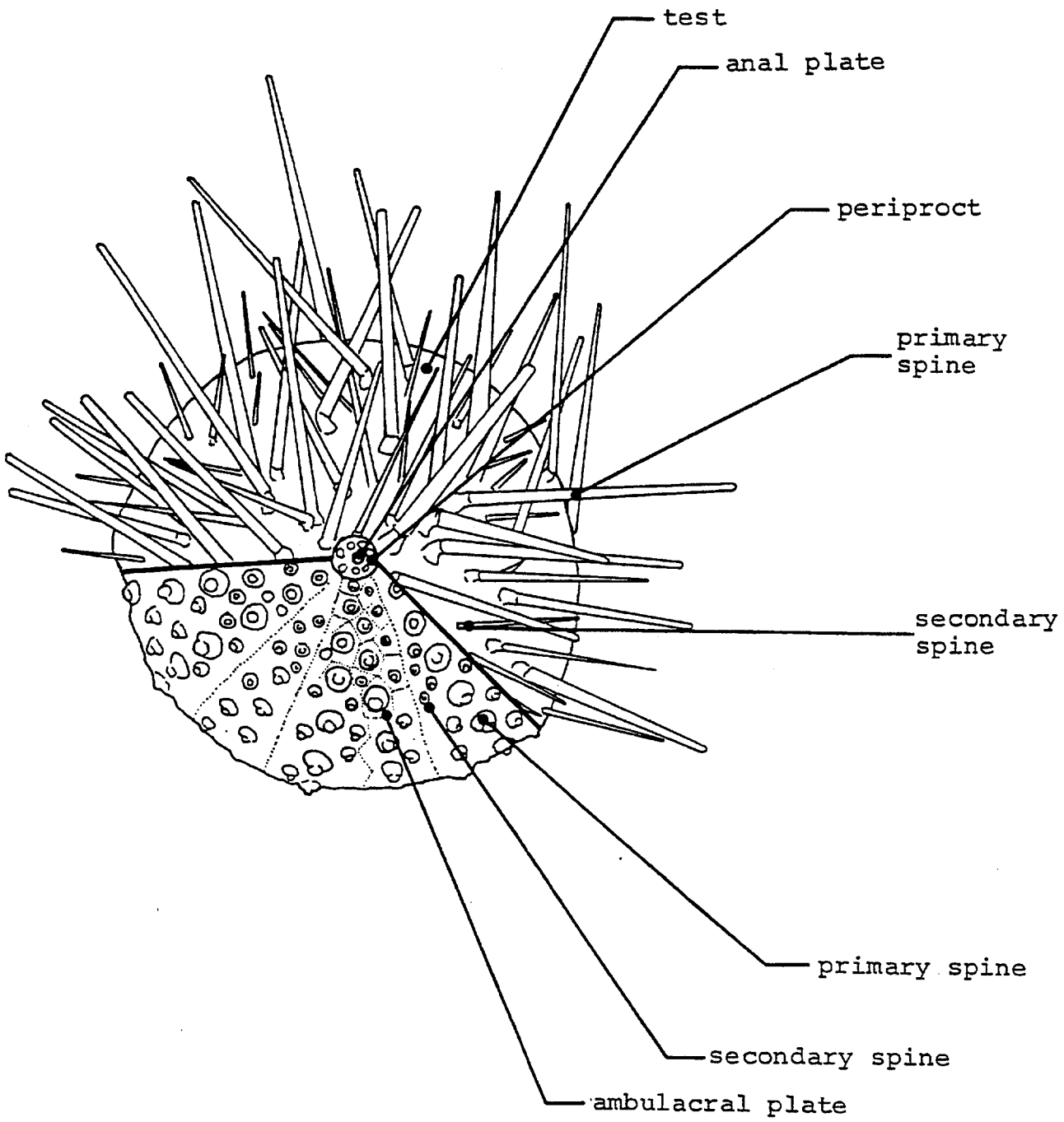


Diagram of regular urchin features.