

# CLASS OPHIUROIDEA

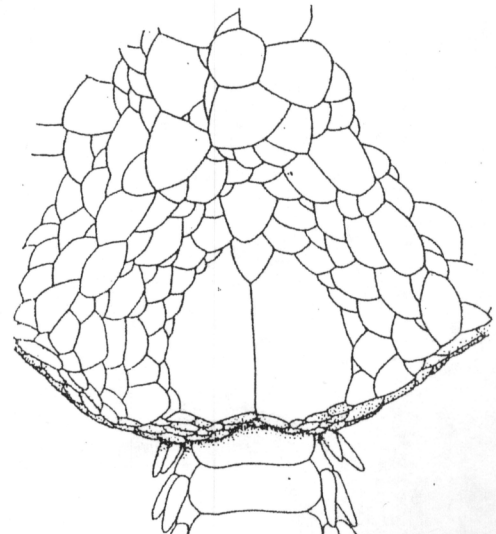
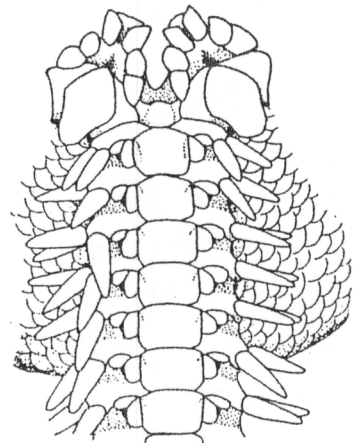
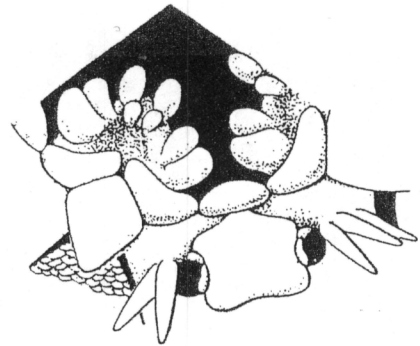
## Order Ophiurida

### Family Amphiuridae

#### *Amphiodia psara*

#### General Description:

Character	<i>Amphiodia psara</i>
Pattern of Aboral Disk	Rosette Scales inflated disc
Radial Shield Pattern	Split Heart
Pattern of Oral Disk	Large Scales
Hylan Forks	No
Arm Insertion to Disk	Underneath
Number of Oral Papillae	3
Arrangement of Papillae	D, slightly larger M, tubular
Infradental Papillae	A, 2sm Blocklike
Oral Shield Pattern	Triangle curved up
Adoral Shield Spine	No
Tooth Pattern	Wedge shaped
Number of Tentacle Spines	3
Pattern of Tentacle Spines	Sm, equal size
Number of Tentacle Scales	2med right angle
Pattern of Dorsal Tentacle	Oblong Oval
Pattern of Ventral Tentacle	Rectangular
Cushion btwn Tentacle Plates	No
Color of Animal Preserved	Brown/cream



Disk scaled  
3 oral papillae on each side  
of jaw