

CLASS HOLOTHOROIDEA

Prepared by Lisa Haney, LACSD

Subclass Aspidochirotea

Diagnosis. 10-30 leaflike or shieldlike oral tentacles, lacks retractor muscles, tube feet present. (e.g., *Enynpiastes*, *Holothuria*, *Isostichopus*, *Parastichopus*, *Pelagothuria*, *Scotoplanes*, *Stichopus*)

Order Aspidochirotida Grube, 1840

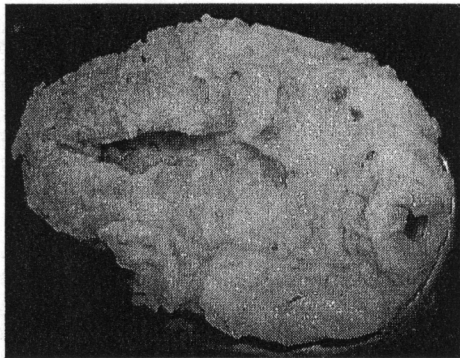
Diagnosis. Tentacles peltate, 15-30 in number. Respiratory trees present. Gonads in 1 or 2 tufts. Ossicles usually include tables.

Family Stichopodidae Haeckel, 1896

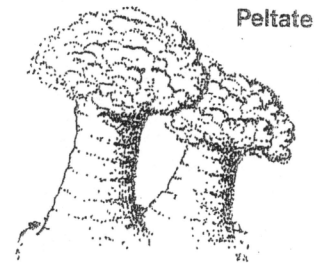
Diagnosis. Peltate tentacles, tube feet ventral, tapered ends, gonads in 2 tufts, dorsal side usually with papillae or warts. Ossicles as tables and sometimes C-shaped rods and buttons.

Parastichopus sp. A (SCAMIT, 2003)

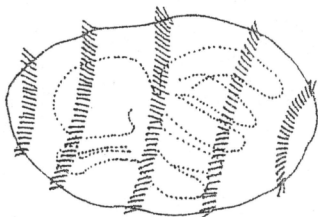
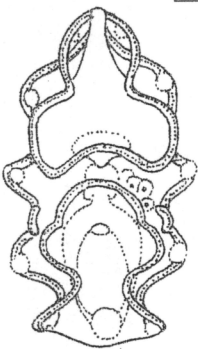
General Body Design:



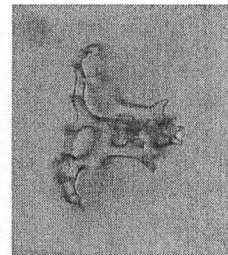
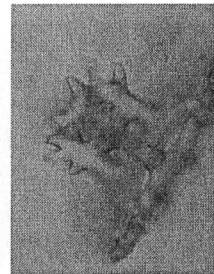
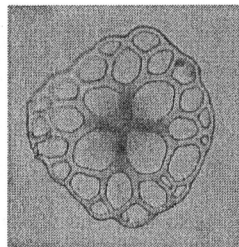
General Tentacle Morphology:



Larvae Morphology:



General Ossicle Morphology:



General Ring Canal Morphology:

