

# Enteropneusta

## Key based on internal characters

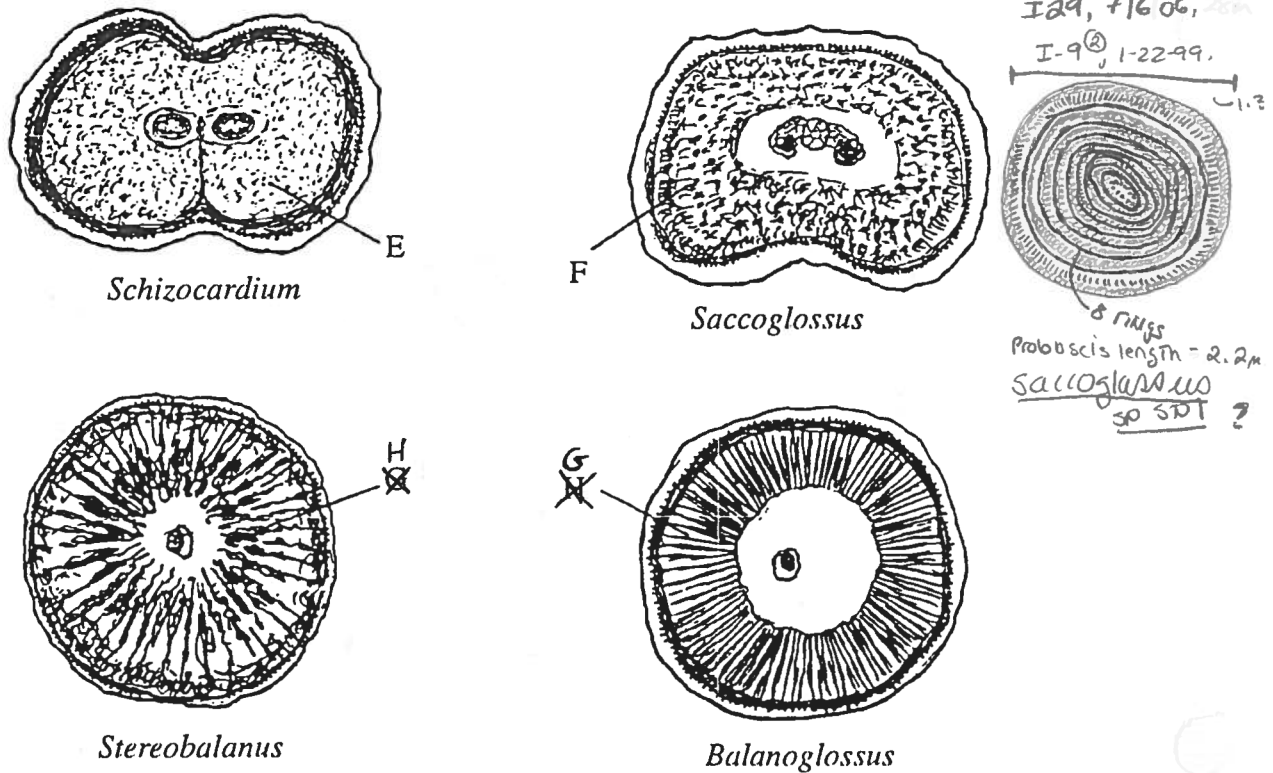


Figure 2. Cross sections of the proboscis in four different genera of enteropneusts.

- 1A. Longitudinal muscles of proboscis arranged in definite patterns; thin layer of external circular muscle ..... 2
- 1B. Longitudinal muscle of proboscis not in patterns but is homogeneously arranged; thick layer of external circular muscle (E) ..... *Schizocardium*
- 2A. Muscle arranged in radial pattern ..... 3
- 2B. Muscle not arranged in radial pattern; concentric rings common (F) ..... *Saccoglossus*
- 3A. Many (>100) thin radial bands closely packed and concentrated peripherally; large central proboscis coelom (G) ..... *Balanoglossus*
- 3B. Less than 50 bands, narrow peripherally with much open space between bands, thicker and more concentrated near the center where the proboscis coelom is small (H) ..... *Stereobalanus*