

Enteropneusta

Key based on external characters

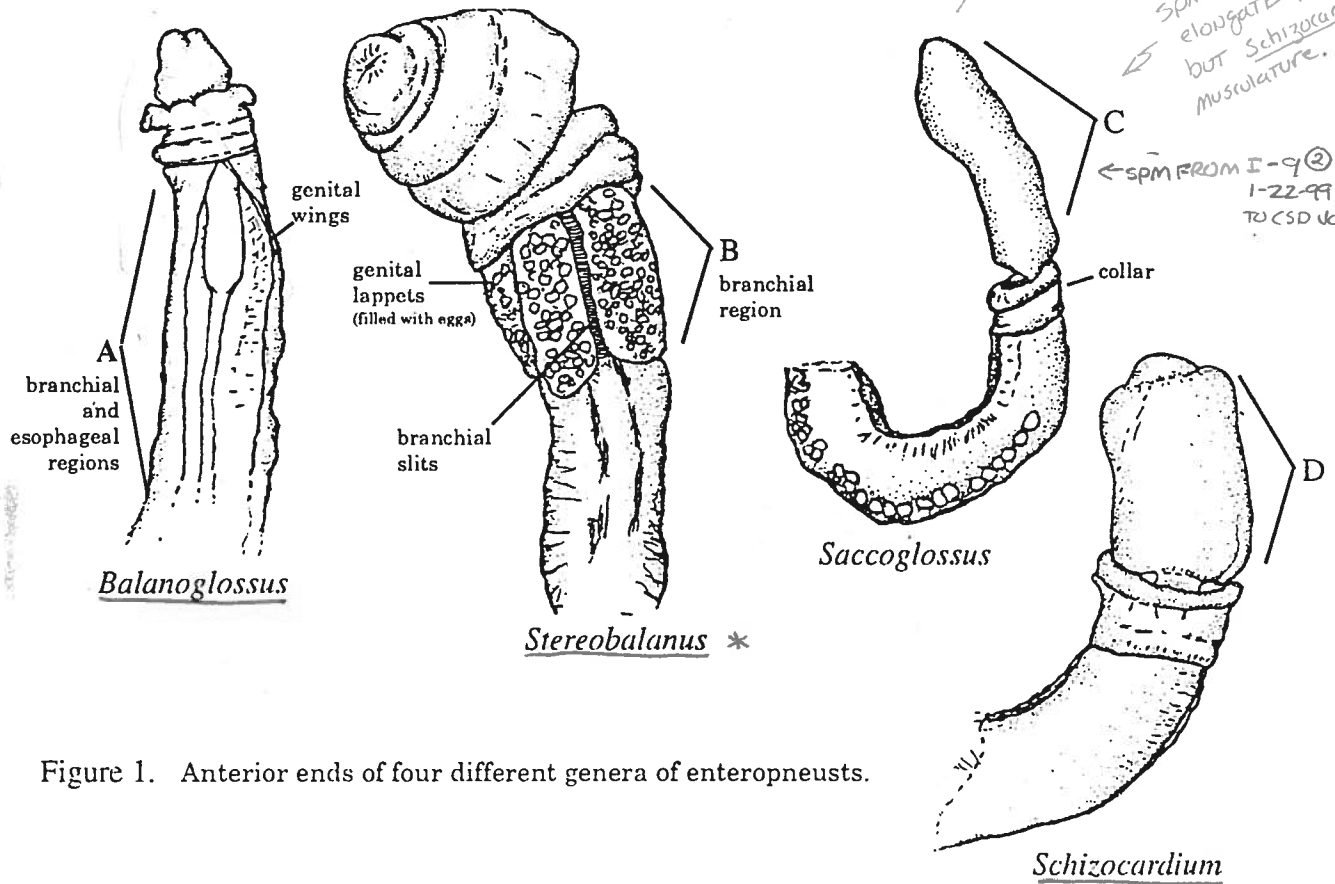


Figure 1. Anterior ends of four different genera of enteropneusts.

- 1A. Genital wings or enlarged genital lappets absent 3
- 1B. Genital wings or enlarged genital lappets present..... 2

- 2A. Lateral genital wings (A) in the branchial and esophageal region *Balanoglossus*
- 2B. Four enlarged genital lappets (B), not present in esophageal region; lappets present below and above branchial openings *Stereobalanus*

- 3A. Elongate cylindroid proboscis (C); small with large eggs (150 μ m) visible externally *Saccoglossus*
- 3B. Proboscis not elongate, generally ovate (D); large with small eggs (<100 μ m); proboscis 3 \times length, 5 \times width of *Saccoglossus* *Schizocardium*