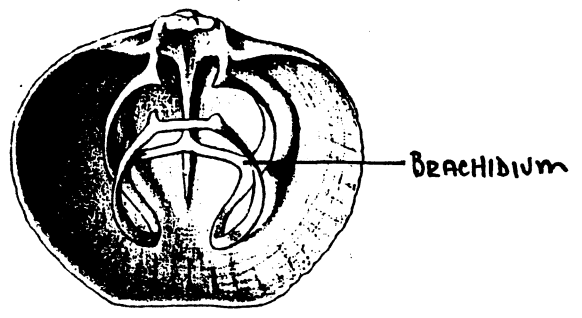
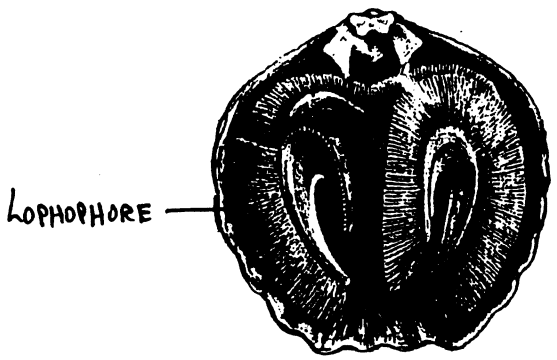
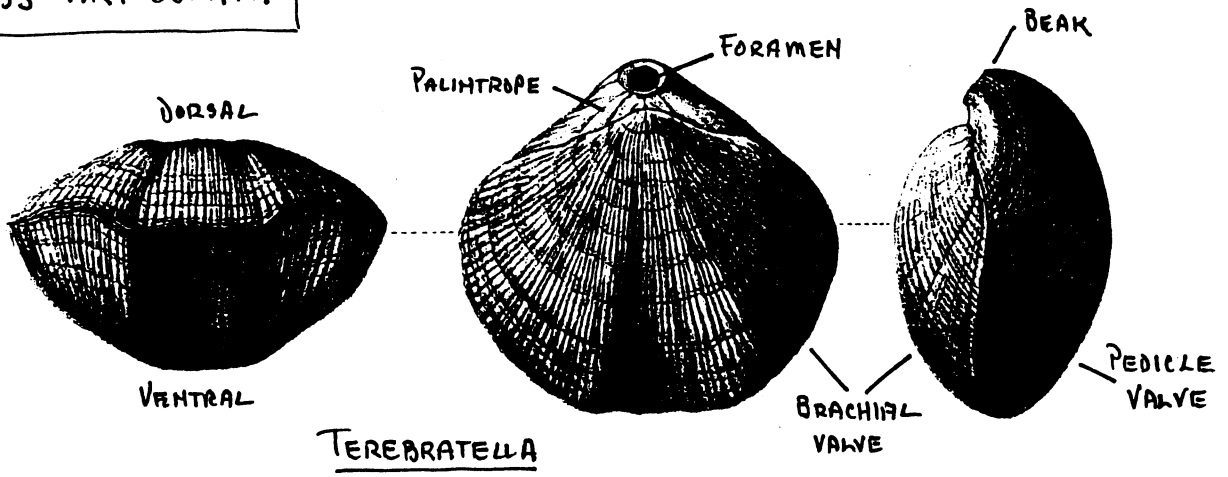


## Artificial Key to Western Canadian Brachiopoda

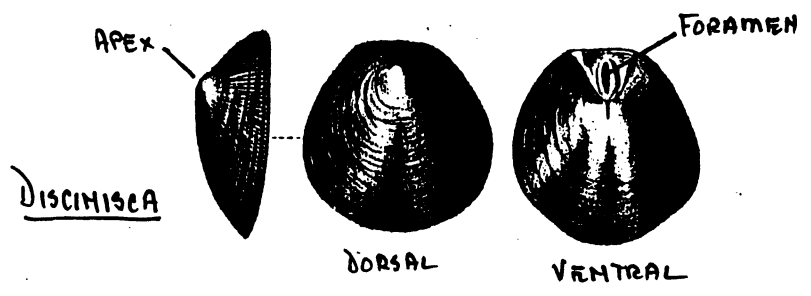
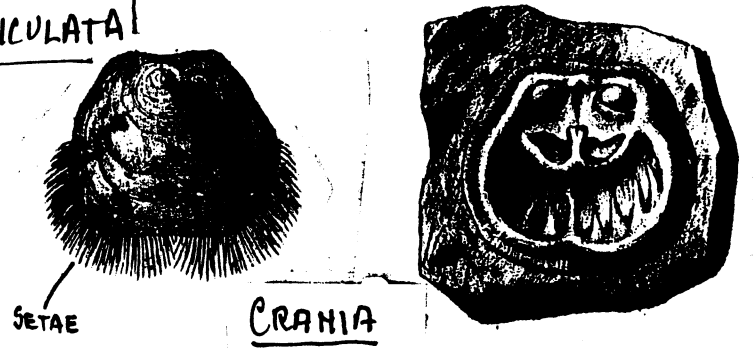
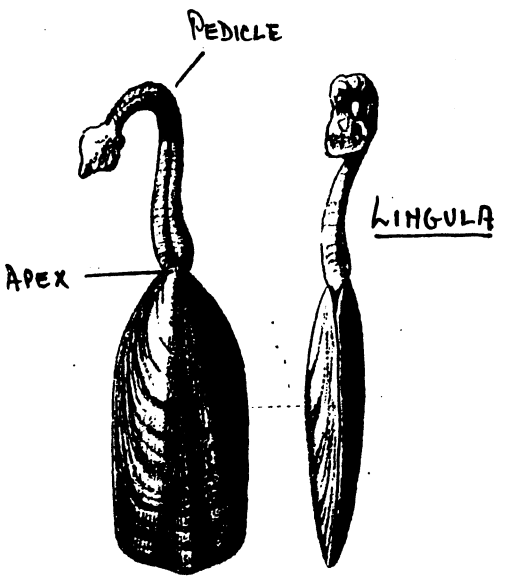
- |  |                        |    |
|--|------------------------|----|
| 1. Shell valves free .....                                 |                        | 2  |
| 1. Valve cemented to substrate.....                        | <i>Crania</i>          |    |
|  | <i>californica</i>     |    |
| 2. Foramen entirely in pedicle<br>valve .....              |                        | 3  |
| 2. Foramen extending to brachial<br>valve.....             | <i>Platidia hornii</i> |    |
| 3. Foramen situated on beak .....                          |                        | 4  |
| 3. Foramen slit-like on floor of valve                     | <i>Discinisca</i>      |    |
|  | <i>lamellosa</i>       |    |
| 4. Anterior valve margin straight .....                    |                        | 9  |
| 4. Anterior valve margin sulcate .....                     |                        | 5  |
| 5. Shell light coloured .....                              |                        | 6  |
| 5. Shell black or grey.....                                | <i>Hemithiris</i>      |    |
|  | <i>psittacea</i>       |    |
| 6. Shell solid, not translucent .....                      |                        | 7  |
| 6. Shell thin, translucent .....                           |                        | 8  |
| 7. Beak prominent, brachial valve<br>slightly sulcate..... | <i>Diestothyris</i>    |    |
|  | <i>frontalis</i>       |    |
| 7. Beak small, brachial <sup>valve</sup> deeply sulcate    | <i>Terebratalia</i>    |    |
|  | <i>transversa</i>      |    |
| 8. Shell inflated, beak narrow.....                        | <i>Laqueus cali-</i>   |    |
|  | <i>fornianus</i>       |    |
| 8. Shell flattened, beak wide.....                         | <i>Frieleia halli</i>  |    |
| 9. Anterior valve margin smooth .....                      |                        | 10 |
| 9. Anterior valve margin crenulated....                    | <i>Terebratulina</i>   |    |
|  | <i>unguicula</i>       |    |
| 10. Shell elongated, inflated .....                        | <i>Terebratulina</i>   |    |
|  | <i>crossei</i>         |    |
| 10. Shell discoid, flattened .....                         | <i>Terebratulina</i>   |    |
|  | <i>sp. indent.</i>     |    |

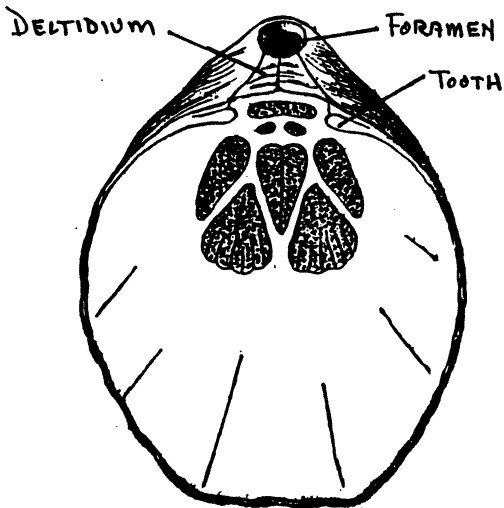
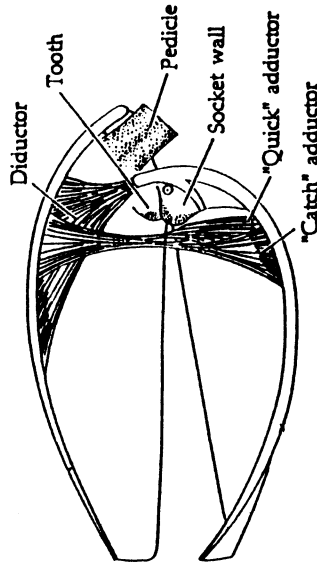
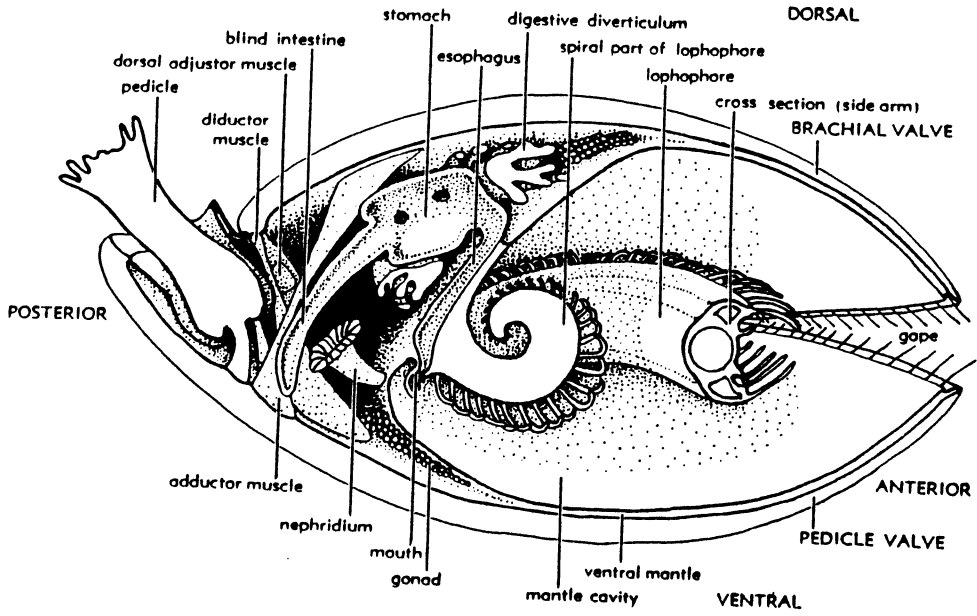
BERNARD (1972)

CLASS ARTICULATA

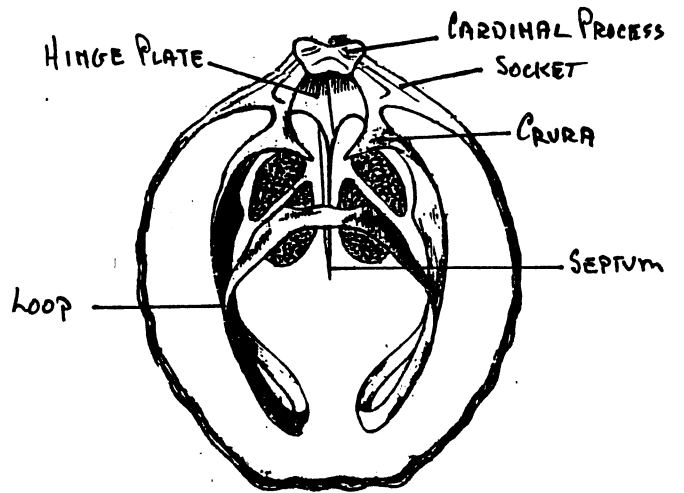


CLASS INARTICULATA

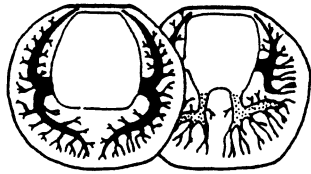




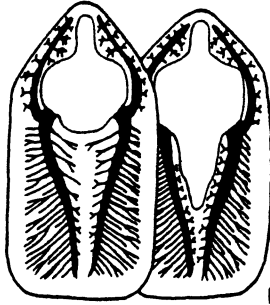
VENTRAL VALVE



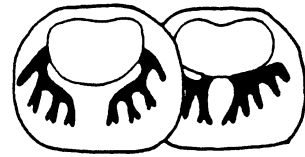
DORSAL VALVE



Discinisca

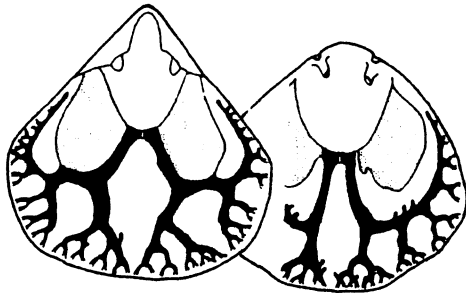


Lingula

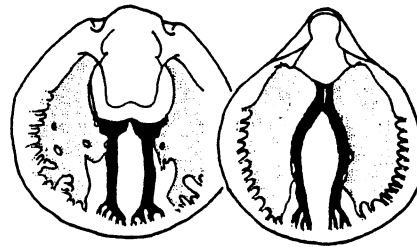


Crania

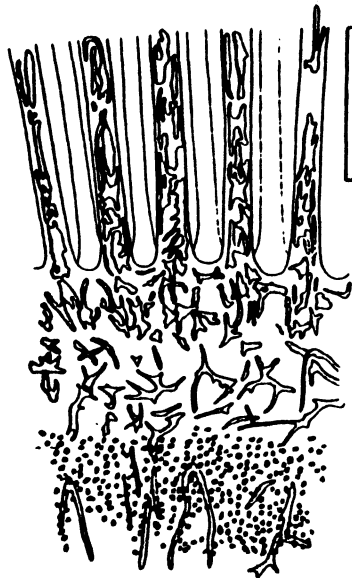
MANTLE CANALS



Hemithiris



Terebratulina



LOPHOPHORE  
FILAMENTS

400 μ



BODY  
WALL

SACCULE PATTERNS



MANTLE  
OVER GONAD