

Anoplodactylus erectus

By: Lisa Haney

Class Pycnogonida, Order Pelmata, Family Phoxichilidiidae

DIAGNOSTIC CHARACTERS:

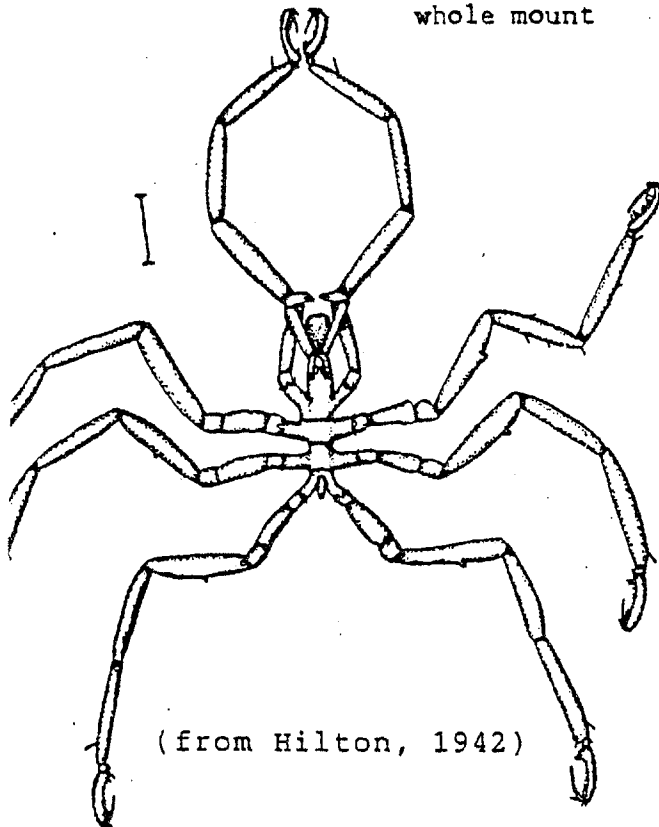
Body: Thorax slender, elongate.
 Lateral processes of moderate length.
Thorax segmentation complete and distinct.
 Abdomen tapering midlength to blunt tip, about half of cephalon length
 ★ **Neck as long as rest of cephalon, slender.**
 Ocular tubercle dorsally at end, twice as high as wide.
 2 pairs of eyes near top of ocular tubercle.

Proboscis: About twice neck length, cylindrical, blunt.
 Increasing slightly in diameter distally.
 Angled downward from cephalon..

* Long of skull on GI

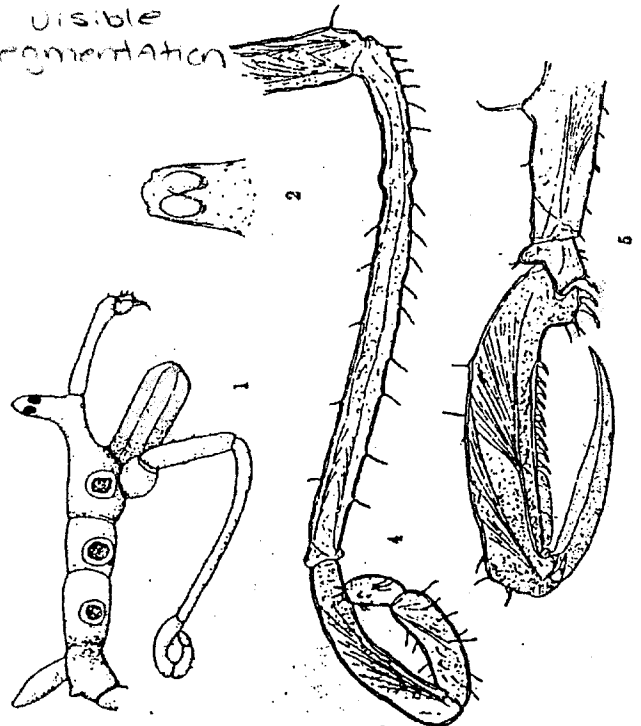
ILLUSTRATION:

Anoplodactylus erectus
whole mount



(from Hilton, 1942)

Body all clear
No visible segmentation



* Eyes on 4th and separate