

22020

Species: ~~Ostracoda~~ SARSIELLA sp E (sp nov)

Museum Number: 170 E

Describer: _____ Date: _____ Family: SARSIELLIDAE

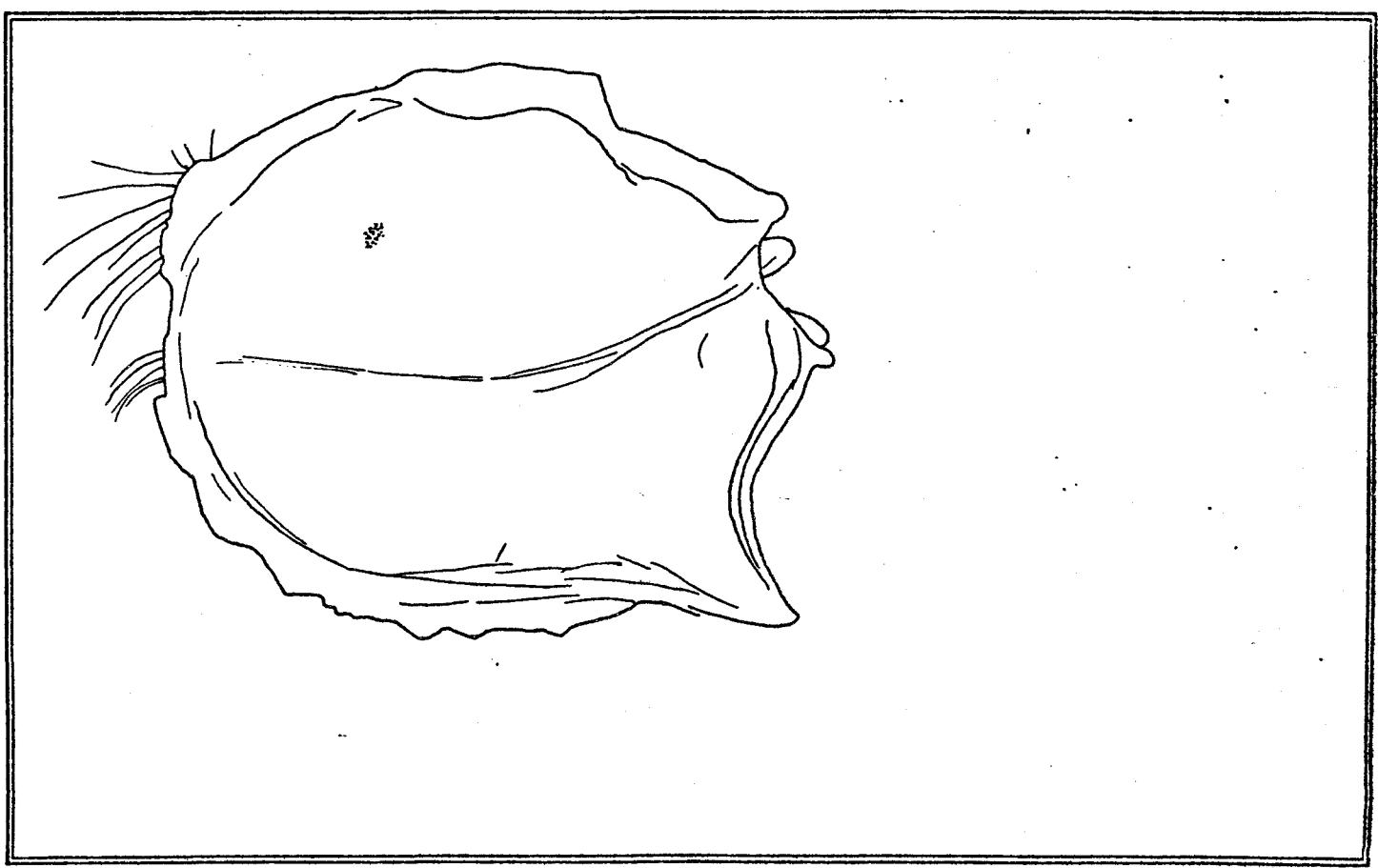
Common Name: _____

Source: _____

Synonymy: _____ Location: _____

Distinguishing Characteristics:

- Shell very thin almost transparent
- Margin of shell slightly thickened
- Eyespot distinct through shell, but very small
- Caudal furca with apparently 5 pair of spines of decreasing length
- distal spine toothed, remaining 4 setose
- Slight lateral ridge runs medially up to postero-dorsal knobule



Ovigerous: J F M A M J J A S O N D

Juvenile: J F M A M J J A S O N D

1	2	3	4	
IBP	IBP	IBP	IBP	
MSGR	MSGR	MSGR	MSGR	
5	6	7	8	
IBP	IBP	IBP	IBP	
MSGR	MSGR	MSGR	MSGR	
9	10	11	12	
IBP	IBP	IBP	IBP	
MSGR	MSGR	MSGR	MSGR	
13	14	15	16	
IBP	IBP	IBP	IBP	
MSGR	MSGR	MSGR	MSGR	
17	18	19	20	
IBP	IBP	IBP	IBP	
MSGR	MSGR	MSGR	MSGR	
21	22	23	24	
IBP	IBP	IBP	IBP	
MSGR	MSGR	MSGR	MSGR	
25	26	27	28	
IBP	IBP	IBP	IBP	
MSGR	MSGR	MSGR	MSGR	
29	30	31	32	
IBP	IBP	IBP	IBP	
MSGR	MSGR	MSGR	MSGR	
33	34	35	36	
IBP	IBP	IBP	IBP	
MSGR	MSGR	MSGR	MSGR	
37	38	39	40	41
IBP	IBP	IBP	IBP	IBP
MSGR	MSGR	MSGR	MSGR	MSGR
42	43	44	45	46
IBP	IBP	IBP	IBP	IBP
MSGR	MSGR	MSGR	MSGR	MSGR

Remarks:

3 INDIVIDUALS
OCSD KI 47'
 12/19/73
 ROCK SCRAPING
SAN CLEMENTE ISLAND
 ROCK SCRAPING 5'
COTYLLA FISH HABIT 20'

I intertidal
 B benthic
 P pelagic
 M mud
 S sand
 G gravel
 R rock

