

330027

Species: RUTIDERMA SP B

Museum Number: \_\_\_\_\_

Describer: \_\_\_\_\_ Date: \_\_\_\_\_ Family: \_\_\_\_\_

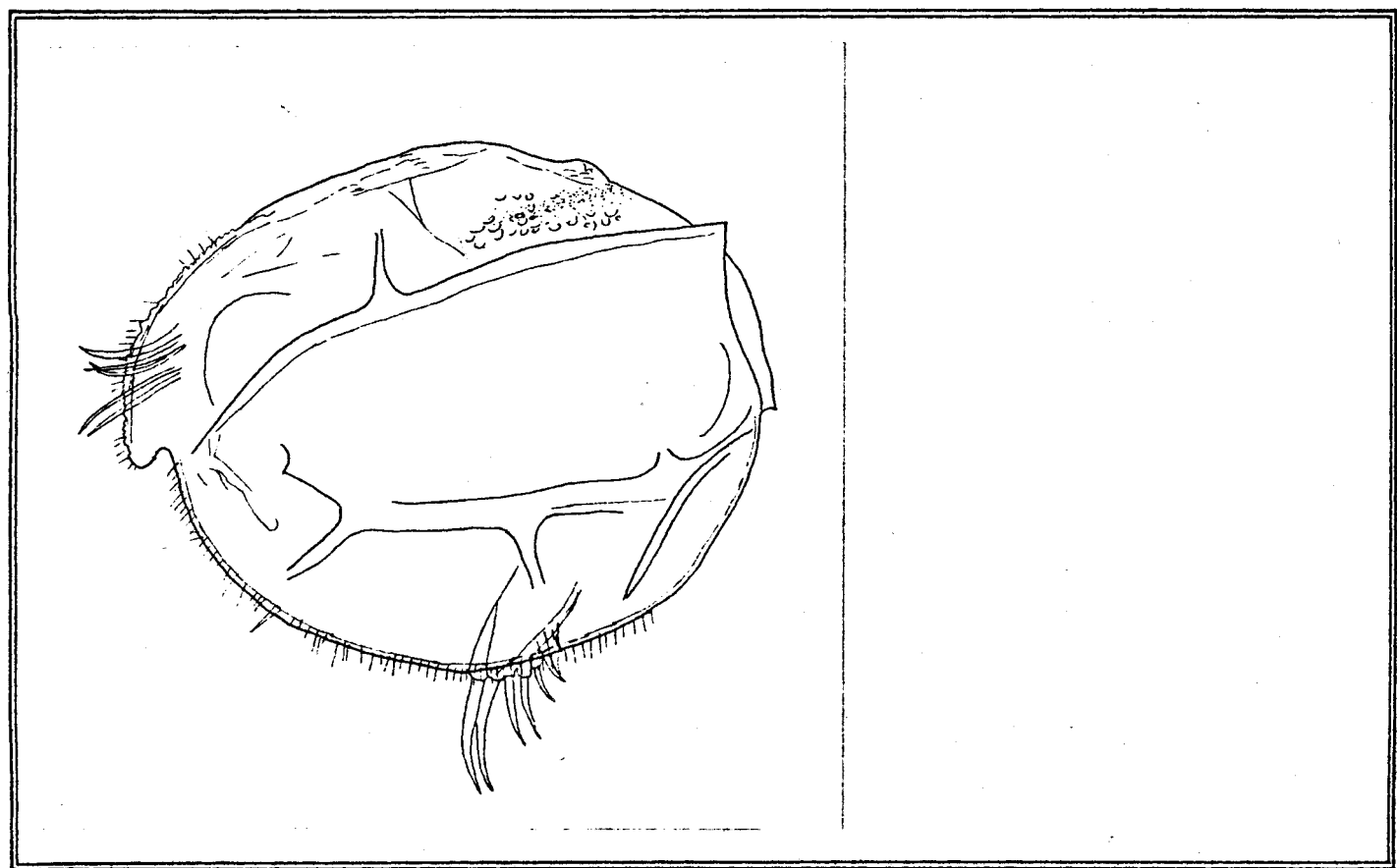
Common Name: \_\_\_\_\_

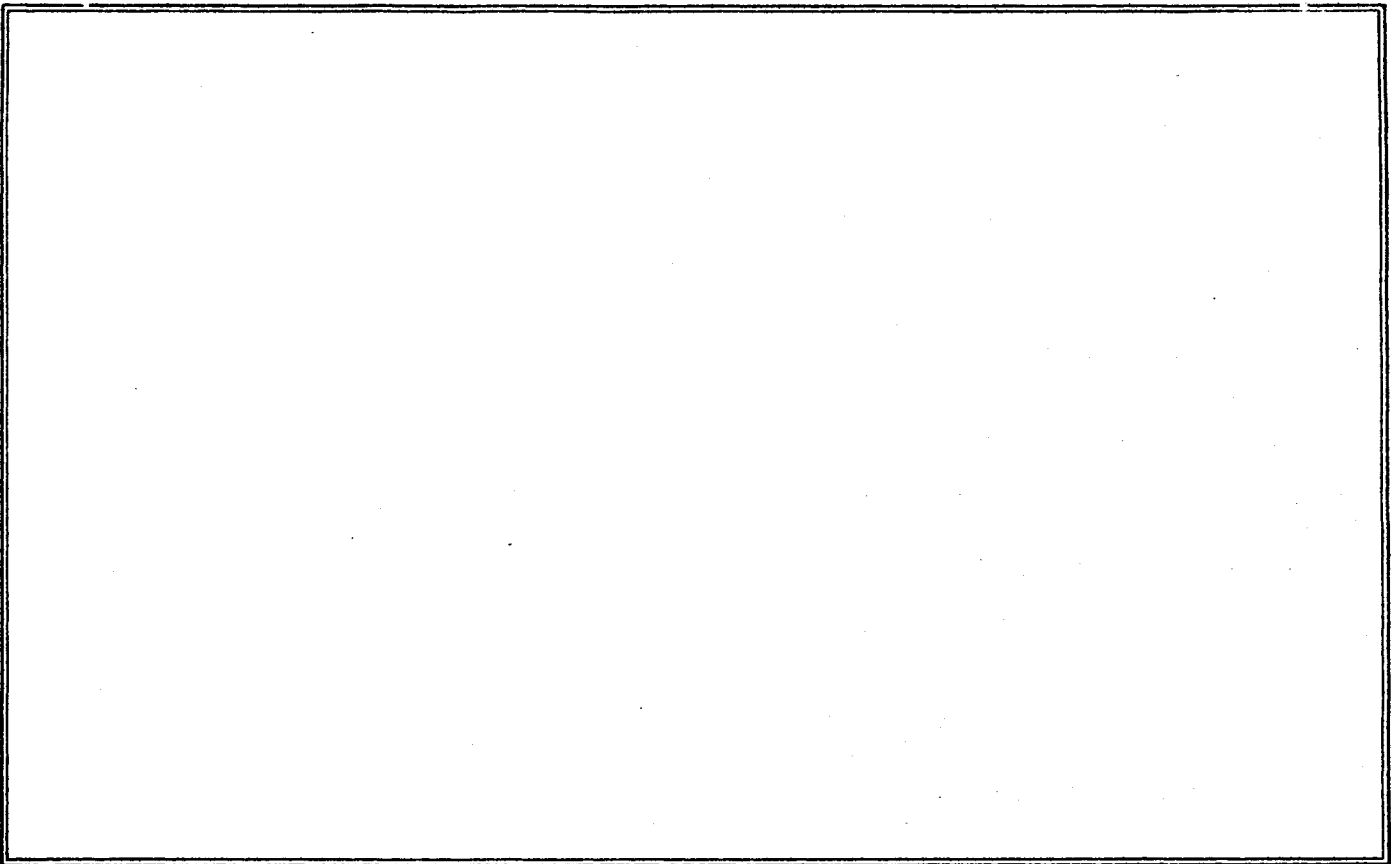
Source: \_\_\_\_\_

Synonymy: RUTIDERMA LOMAE (PERSONAL COMMUNICATION J. BAKER) Location: \_\_\_\_\_

Distinguishing Characteristics:

LATERALLY COMPRESSED WITH DISTINCT LATERAL RIDGES PRODUCED POSTERIORLY  
TO PROJECTIONS





Ovigerous: J F M A M J J A S O N D

Juvenile: J F M A M J J A S O N D

1	2	3	4	
IBP	IBP	IBP	IBP	
MSGR	MSGR	MSGR	MSGR	
5	6	7	8	
IBP	IBP	IBP	IBP	
MSGR	MSGR	MSGR	MSGR	
9	10	11	12	
IBP	IBP	IBP	IBP	
MSGR	MSGR	MSGR	MSGR	
13	14	15	16	
IBP	IBP	IBP	IBP	
MSGR	MSGR	MSGR	MSGR	
17	18	19	20	
IBP	IBP	IBP	IBP	
MSGR	MSGR	MSGR	MSGR	
21	22	23	24	
IBP	IBP	IBP	IBP	
MSGR	MSGR	MSGR	MSGR	
25	26	27	28	
IBP	IBP	IBP	IBP	
MSGR	MSGR	MSGR	MSGR	
29	30	31	32	
IBP	IBP	IBP	IBP	
MSGR	MSGR	MSGR	MSGR	
33	34	35	36	
IBP	IBP	IBP	IBP	
MSGR	MSGR	MSGR	MSGR	
37	38	39	40	41
IBP	IBP	IBP	IBP	IBP
MSGR	MSGR	MSGR	MSGR	MSGR
42	43	44	45	46
IBP	IBP	IBP	IBP	IBP
MSGR	MSGR	MSGR	MSGR	MSGR

Remarks:

OXNARD 180'

I intertidal  
 B benthic  
 P pelagic  
 M mud  
 S sand  
 G gravel  
 R rock

