

330030

Species: Euphilomedes oblonga

Museum Number: 170-S

Describer: Juday Date: 1907 Family: Cypridinidae

PHILOMEDIDAE

Common Name: _____

Source: Juday: Ostracoda of the San Diego Region II. Littoral Forms (Univ. Cal. Pub. in Zoo. Vol 3 # 9, 1907) Poulsen 1962.

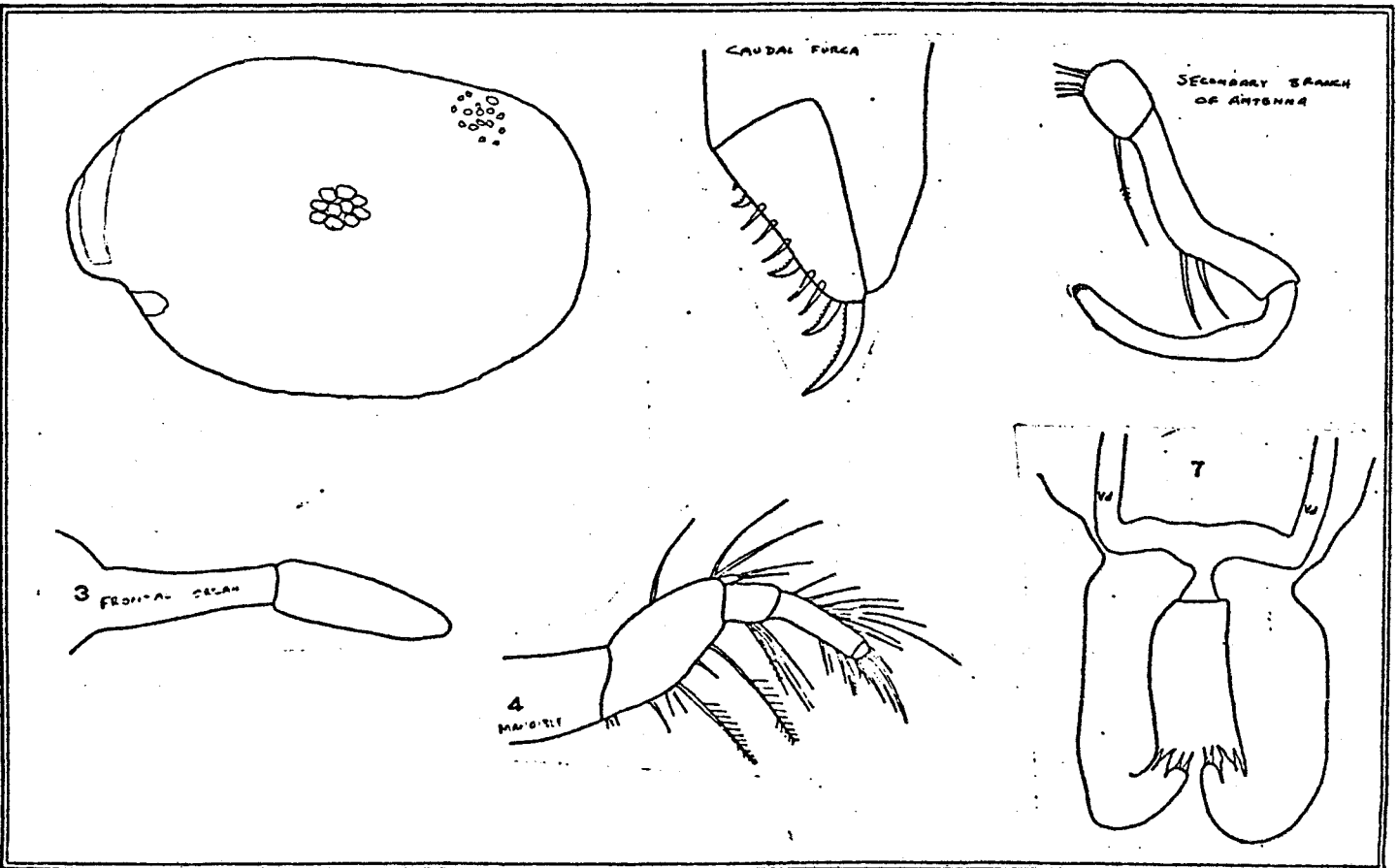
Synonymy: Pleoschisma oblonga Location: San Diego & San Pedro

Distinguishing Characteristics:

Shell moderately thin, whitish, lightly pitted, oblong ovate with truncate posterior margin, rostral sinus distinct but shallow

Eyespot distinct

Caudal furca with 2 primary claws distally, followed by 2 secondaries, 2 primaries, 3 secondaries and 2 short stout claws.



330030

Species: Euphilomedes oblonga

Museum Number: 170-S

Describer: Juday

Date: 1907

Family: Cypridinidae

PHILOMEDIDAE

Common Name: _____

Source: Juday: Ostracoda of the San Diego Region II. Littoral Forms (Univ. Cal. Pub. in Zoo. Vol 3 # 9, 1907) Poulsen 1962.

Synonymy: Pleoschisma oblonga Location: San Diego & San Pedro

Distinguishing Characteristics:

Shell moderately thin, whitish, lightly pitted, oblong ovate with truncate posterior margin, rostral sinus distinct but shallow

Eyespot distinct

Caudal furca with 2 primary claws distally, followed by 2 secondaries, 2 primaries, 3 secondaries and 2 short stout claws.

