

Leuroleberis sharpei
Cylindroleberididae

Kornicker 1981

Voucher #MBC 16

August 15, 1983

Literature and Code: Kornicker, L.S. 1981. Revision, Distribution, Ecology, and Ontogeny of the Ostracode Subfamily Cyclasteropinae (Myodocopina: Cylindroleberididae). Smiths. Contr. to Zool. #319.

Synonymy: Cylindroleberis lobiancoi - Sharp 1908
Cycloleberis lobiancoi - of Hobson & Chess 1976
Cycloleberis americana - of Baker 1975
Cycloleberis sp.D - In use by SCCWRP & SCAMIT 1979-1983.
(=C. dentata manuscript name only)

Primary Diagnostic Characters: Distinguished easily from other southern California Ostracods by its ovoid general outline, lack of sculpturing, generally translucent whitish valves and large size (often 4-6mm).

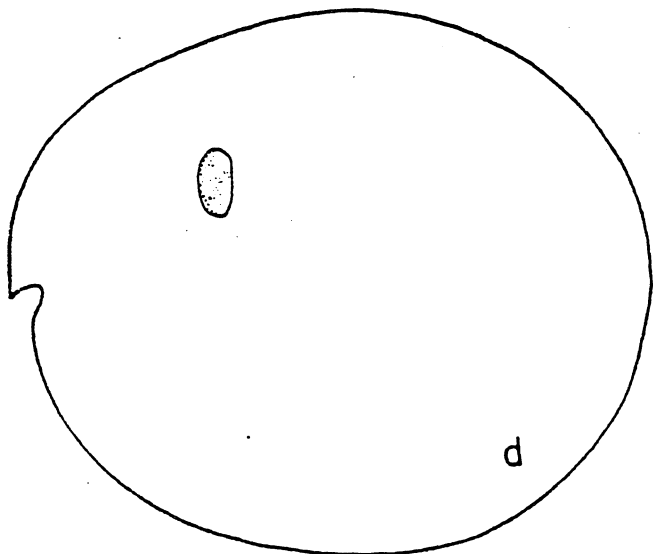


FIGURE 27

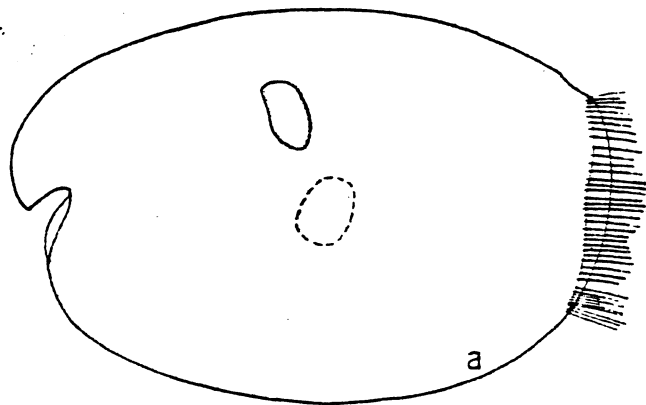


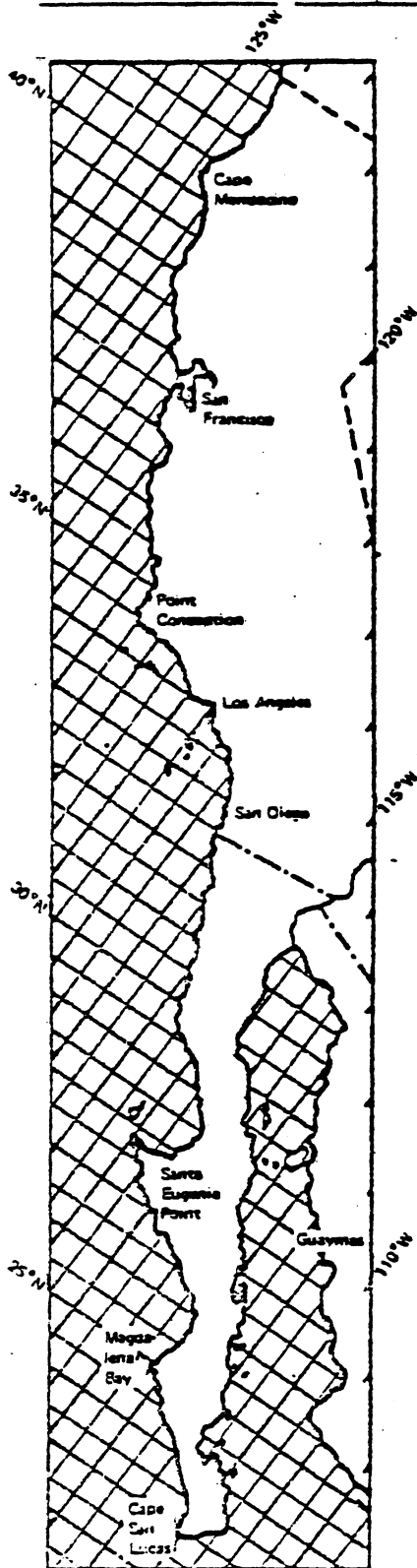
FIGURE 28

Fig. 27 from
Kornicker 1981

Fig. 28 from
Kornicker 1981

Leuroleberis sharpei

Kornicker 1981



Pertinant Literature:

Sexual Dimorphism: Male slightly more elongate with vertical row of setae on posterior of valves.

Depth Range: 5-351m

Distribution:

From Kornicker 1981, Monterey Bay to Baja California and Gulf of California.

From Baker 1975, Point Conception to San Diego.

Ecology: Sandy bottom not uncommon in high surf areas such as Huntington Beach and San Onofre (Myers personal data).