

Leptochelia dubia

By: Lisa Haney

Class Malacostraca, Subclass Eumalacostraca, Order Tanaidacea, Family Leptocheliidae

DIAGNOSTIC CHARACTERS:

Cephalothorax tapered towards the anterior end.

2 setae on the merus of pereopod 1

★ **Pereonite 1 shortest of all pereonite.**

Pereonites 2-6 quadrangular with straight, parallel, lateral borders.

Pereonite 4 longest.

First antenna 3-seg., 1st seg. long and slender.

Second antenna 6-seg.

Spines on 2 & 3 seg of second antenna of female.

Mandible with pars molaris broad, crushing area well-developed, 1/3 of surrounding wall denticulated.

3-5 setae on the distal end of maxillipedal basis.

Maxilliped without coxae

Unfused maxillipedal basis

Cheliped carpus slender

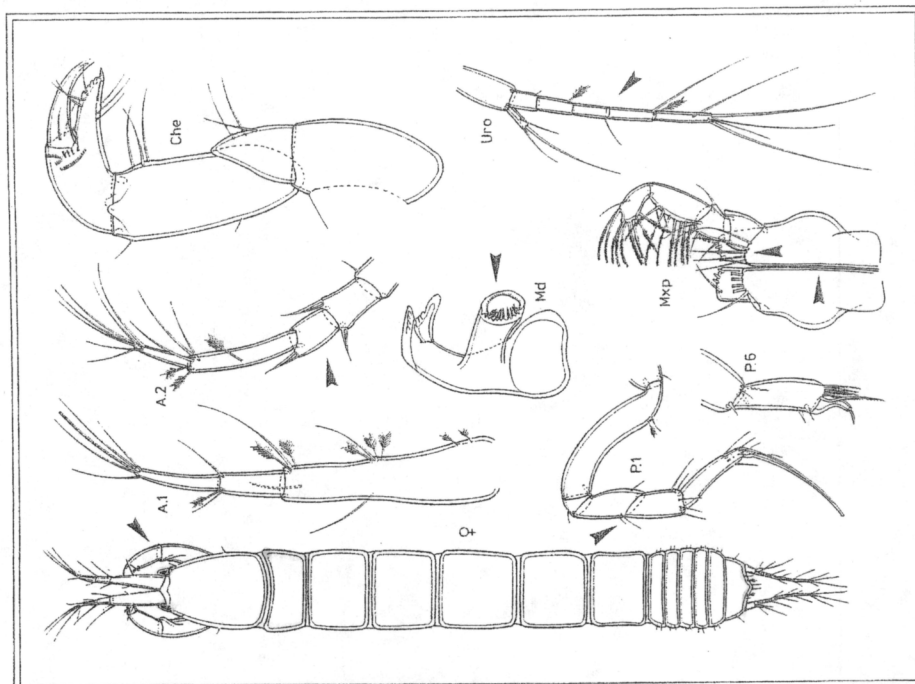
Armature of maxillipedal endite

Uropod biramous

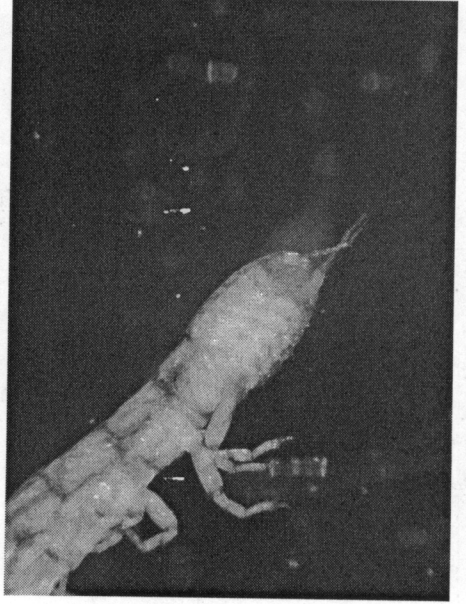
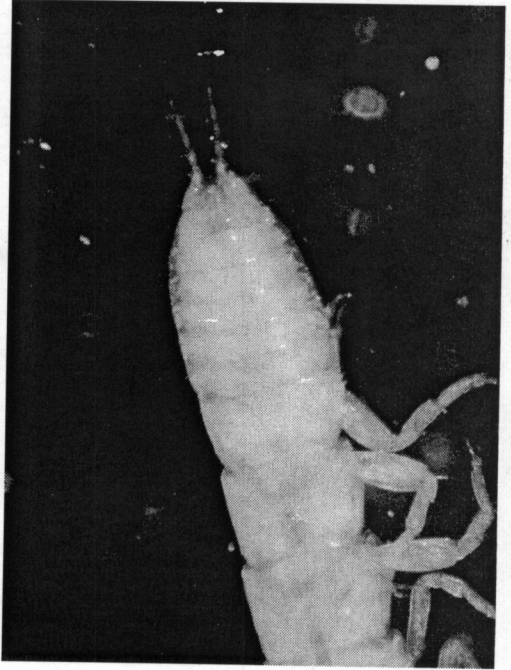
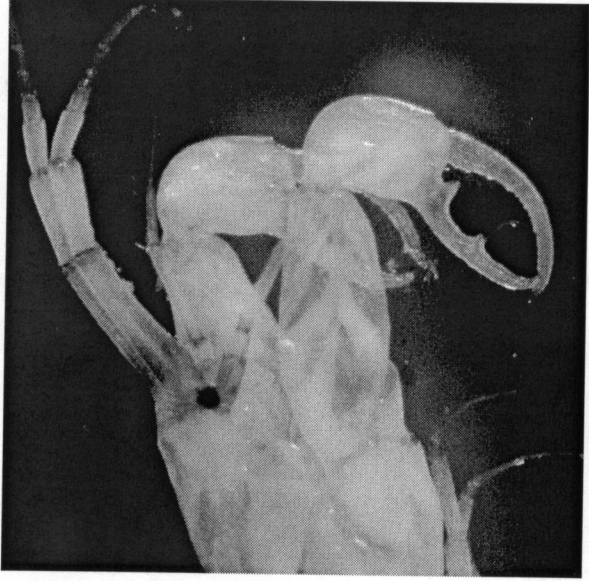
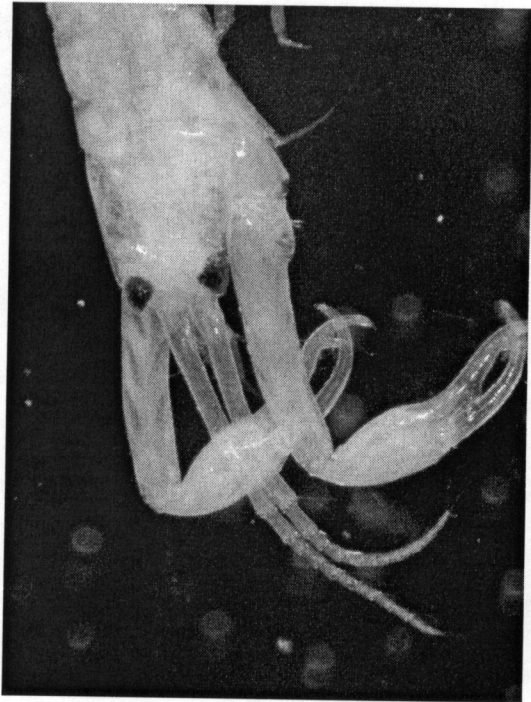
5 segmented endopodite of the uropods

Males are distinguished by large chelipeds and handcuff-like propodus/dactylis combination.

ILLUSTRATION:



Male Comparisons



Leptocheilia dubia