

SCAMIT CODE: TVG 2

Date Examined: May 14, 1984

Synonymy: None

Literature Cited:

Menzies, R. J., and J. L. Barnard. 1959. Marine isopoda on coastal shelf bottoms of southern California: Systematics and ecology. *Pac. Nat.* 1(11): 35 pp. (see p. 21)

Schultz, G. A. 1969. How to know the marine isopod crustaceans. Wm. C. Brown Company Publishers. 395 pp. (see p. 81)

Diagnostic Characters:

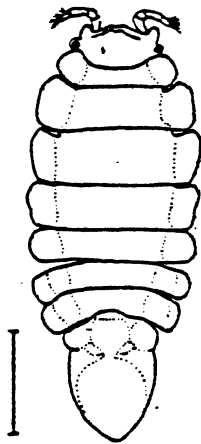
Two small tubercles on frontal margin of cephalon. Abdomen bears 3 basal swellings, the middle one bulbous and inflated.

Variability: None noted

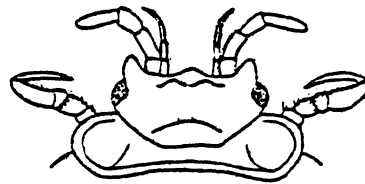
Related Species and Character Differences:

*Edotea triloba* - has low dorsal tubercles and has more pointed abdomen

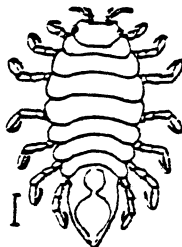
*Edotea montosa* - eyes less projecting



*Edotea sublittoralis*



*Edotea montosa* (Stimpson)



*Edotea triloba* (Say)

Depth Range: 14-64 m

Distribution:  
Point Conception, California to Northern Mexico.

Ecology:

Additional Comments:

