



City and County of San Francisco Voucher Sheet

Voucher #: AM370

Crustacea: Isopoda: Idoteidae

Original Prep.Date: 26 October 2005

Prepared By: CL Zable

Species Code: EDO_SUBLITTORAL

Species: *Edotea sublittoralis*

Authority: Menzies and Barnard, 1959

Common Synonyms:

Voucher Information

VIAL NUMBER	SAMPLE NUMBER	STATION	SAMPLE DATE	NUMBER OF SPECIMENS	COMMENTS/NOTES
1	BSSWA006	06	05 Oct 1982	6	
2	BSSWB002	02	05 Oct 1982	2	
3	BSSWC244	25	31 Oct 1996	25	
4	BSSWC240	01	31 Oct 1996	1	1.0 mm
5	BSSWA104	06	24 Feb 1988	6	1.0 mm

Characters:

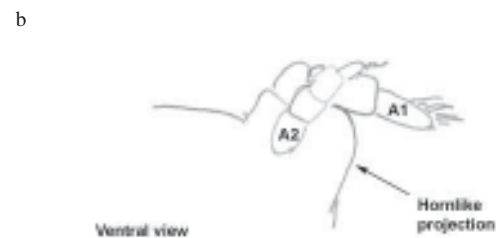
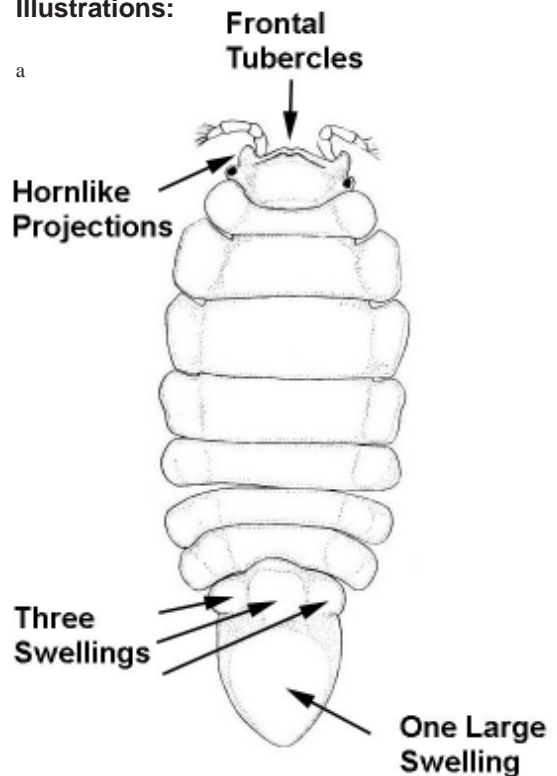
- Anterolateral angles of head produced into horn-like projections (a).
- 2 small tubercles on center front of head (a).
- Final segment with three swellings forward and one larger swelling rear center (a).
- Flagellum of antenna 2 (A2) is rudimentary, so that A2 is shorter than antenna 1 (A1) (b) and may not be visible when viewed dorsally (a).

Additional Information:

Type specimen collected from silt at 50 feet depth off of Newport, California (Menzies and Barnard 1959).

Vancouver Island to northwestern Baja California at 15-46 m depth (Brusca *et al.* 2001).

Illustrations:



a from Menzies and Barnard (1959)

b BSSWC240, camera lucida drawing by CLZ, 2005

Edotea sublittoralis (continued)

Similar Species:

Comments:

References:

Brusca R.C, Cohelo V., Taiti S. 2001. A Guide to the Coastal Isopods of California. <http://tolweb.org/tree/eukaryotes/animals/arthropoda/crustacea/isopoda/accessory/caguide/caguide.html> Accessed August 26, 2005.

Menzies R. J., Barnard J. L. 1959. Marine Isopoda on coastal shelf bottoms of southern California: systematics and ecology. *Pacific Naturalist*. Volume 1. 11. p 3-35.

Revision History: