

Species: Janiralata occidentalisMuseum Number: 69Describer: Walker

Date: _____

Family: Janiridae

Common Name: _____

Source: Marine Isopoda, Chiefly from Northern California, with notes on related forms, Proceedings of the United States Museum, Vol. 101, No. 3273.Synonymy: Janira occidentalis Walker, 1898Location: Puget Sound, Washington to Laguna Beach, CA. Depth: Intertidal to 69 Meters.

Distinguishing Characteristics:

Body elongate, three times longer than wide, 2 mm: 6 mm. Head, about twice as wide as long, with the anterior margin sinuate, but not produced in a frontal median process. The eyes are large, round, composite, and dorsally placed. The first segment of the thorax has the post-lateral lobe large and produced. The second and third segments have the antero and post-lateral lobes small, but produced and conspicuous. The abdomen is composed of a single large segment, the post-lateral angles of which are small but very acutely produced.

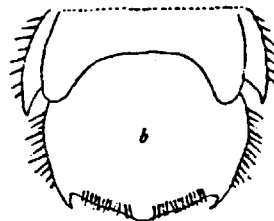
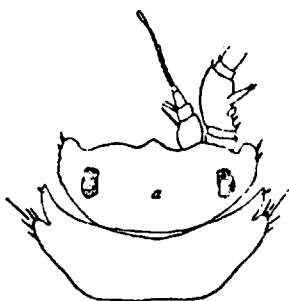
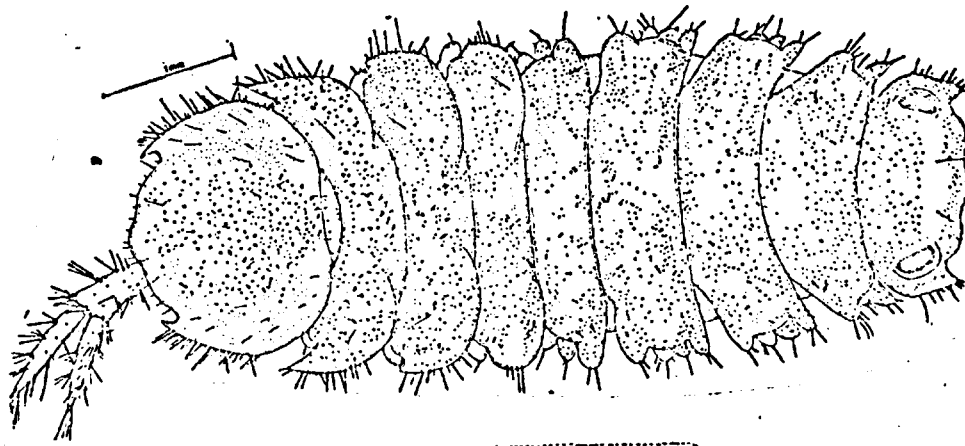


FIG. 526.—*JANIRA OCCIDENTALIS* (AFTER WALKER). a, HEAD AND FIRST THORACIC SEGMENT. b, ABDOMEN AND PART OF PREVIOUS SEGMENT OF THORAX.

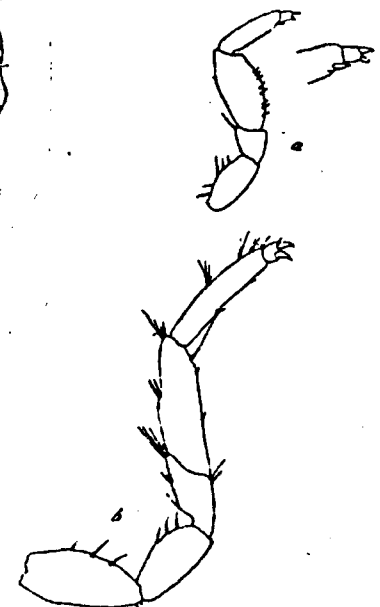


FIG. 528.—*JANIRA OCCIDENTALIS* (AFTER WALKER). a, FIRST LEG. b, THIRD LEG.



FIG. 527.—*JANIRA OCCIDENTALIS*. a, ABDOMEN WITH UROPODA. b, MAXILLIPED. $\times 51\frac{1}{2}$. c, MANDIBLE. $\times 51\frac{1}{2}$. d, FIRST LEG. $\times 27\frac{1}{2}$.

Ovigerous: J F M A M J J A S O N D

Juvenile: J F M A M J J A S O N D

1	2	3	4	
IBP	IBP	IBP	IBP	
MSGR	MSGR	MSGR	MSGR	
5	6	7	8	
IBP	IBP	IBP	IBP	
MSGR	MSGR	MSGR	MSGR	
9	10	11	12	
IBP	IBP	IBP	IBP	
MSGR	MSGR	MSGR	MSGR	
13	14	15	16	
IBP	IBP	IBP	IBP	
MSGR	MSGR	MSGR	MSGR	
17	18	19	20	
IBP	IBP	IBP	IBP	
MSGR	MSGR	MSGR	MSGR	
21	22	23	24	
IBP	IBP	IBP	IBP	
MSGR	MSGR	MSGR	MSGR	
25	26	27	28	
IBP	IBP	IBP	IBP	
MSGR	MSGR	MSGR	MSGR	
29	30	31	32	
IBP	IBP	IBP	IBP	
MSGR	MSGR	MSGR	MSGR	
33	34	35	36	
IBP	IBP	IBP	IBP	
MSGR	MSGR	MSGR	MSGR	
37	38	39	40	41
IBP	IBP	IBP	IBP	IBP
MSGR	MSGR	MSGR	MSGR	MSGR
42	43	44	45	46
IBP	IBP	IBP	IBP	IBP
MSGR	MSGR	MSGR	MSGR	MSGR

Remarks:

I Intertidal
 B beach
 P pelagic
 M mud
 S sand
 G gravel
 R rock

