
SCAMIT Code: MBC 59 Date Examined: January 12, 1987
Voucher by: Don Cadien

SYNONYMY: Desmosoma sp. A of MBC
Prochelator sp. A of MBC

LITERATURE: Hessler 1970

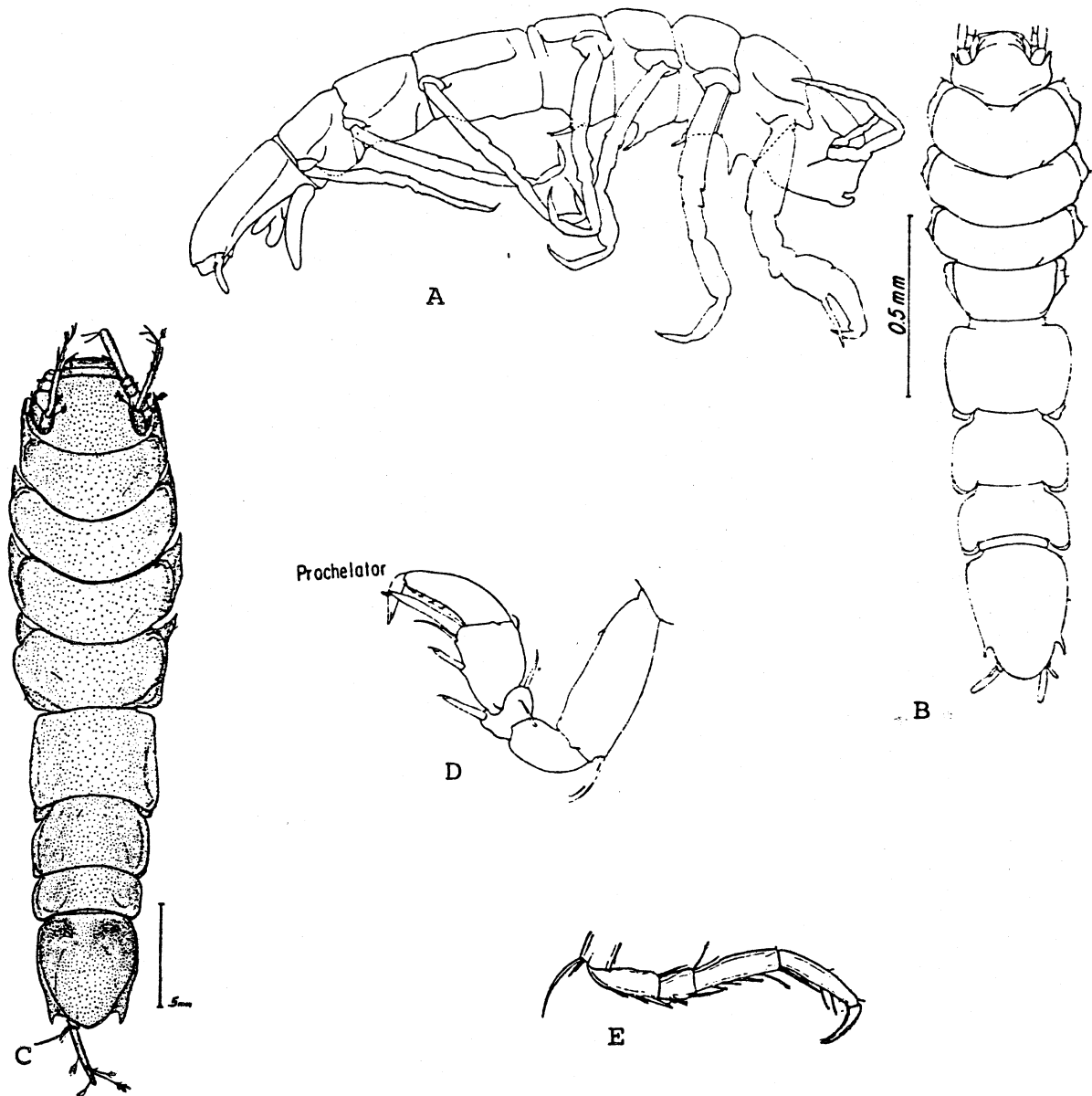
DIAGNOSTIC CHARACTERISTICS:

1. First pereopod larger than other legs, carpochele, with large blade-like spine extending anteriorly (at a slight angle from the appendage axis) off the antero-ventral edge of the carpus of 1st leg. Dactylus forms the "moveable finger" of this pseudochele.
2. Two accessory spines present on ventral margin of carpus, the second bifid.
3. Peraeonal coxae without produced acute points at anterior corners.
4. Lateral margins of pereonite 1 slightly bilobed.
5. Antennal bases shallowly inserted ($\leq 30\%$) into cephalon.

RELATED SPECIES AND CHARACTER DIFFERENCES:

1. Can be distinguished from the only described member of the family reported from California Momedossa symmetrica (Schultz 1966) by character 5. Momedossa (formerly Desmosoma) symmetrica has the antennal bases inserted more than 75% of the cephalon length vs. $\leq 30\%$ for Prochelator sp. A. The two are in different subfamilies. In the Desmosomatinae (to which Momedossa belongs) pereopod 1 is not enlarged relative to the remaining legs. In the Eugerdelatinae (including Prochelator) pereopod 1 is enlarged and carpochele.

Although no other species are yet recorded from California Hessler (1970) reports undescribed species of Balbidocolon, Whoia, Eugerda, Mirabilicoxa, Eugerdella,



- A. Dorsal and B Right lateral habitus of Prochelator lateralis (generotype)
- C. Dorsal view of Momedossa symmetrica (Schultz 1966) D Pereiopod 1 of same
- E. Pereiopod 1 of generalized Prochelator
- (A, B and E from Hessler 1970; C and D from Schultz 1966)

Torwolia and Chelator from collections made on the Cascadia Abyssal Plain by A.G. Carey of Oregon State. Prochelator sp. A can be distinguished from all of the above by one or more of characters 1-3. Characteristic 1 separates Balbicolon, Whoia, Eugerdella, and Mirabilicoxa (all in the Desmosomatinae), while character 2 separates Torwollia, Eugerdella, and Chelator from Prochelator. Prochelator was also reported from off Oregon, but whether this was the present species is not known.

Note: This is a small species which is only occasionally retained on a 10mm screen.

DEPTH RANGE: 133m - 308m.

DISTRIBUTION: Off Pt. Estero south to Coronado Submarine Canyon.