

SCAMIT Code: SCCWRP 46

Date examined: October 23, 1984
Voucher by: Jim Roney

Synonymy:

Pandalus pubescentulus Dana 1852; Stimpson 1857; Kingsley 1878; Smith 1879; Holmes 1900.

Pandalus platyceros Brant 1851; Rathbun 1904; Schmitt 1921; Butler 1980; Word 1976.

Literature:

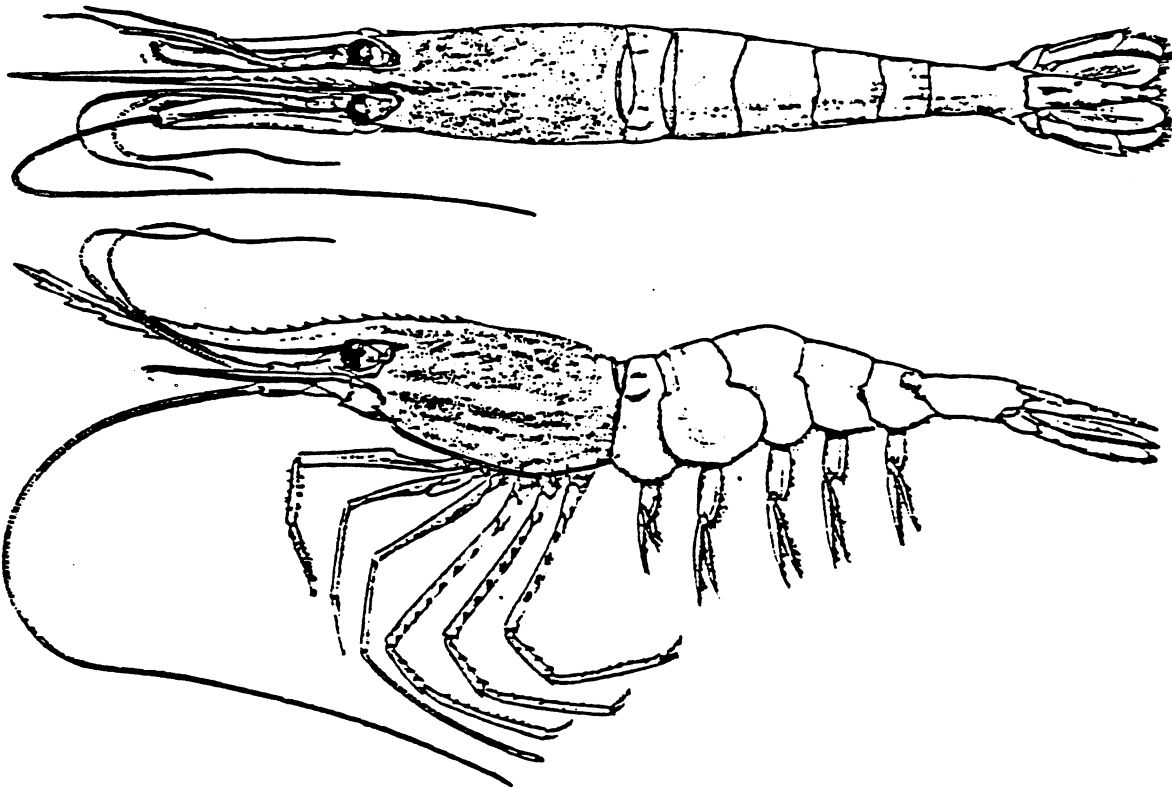
Brandt 1851; Butler 1970; Butler 1980; Dana 1852; Holmes 1900; Kingsley 1878; Schmitt 1921; Smith 1879; Stimpson 1857; Word and Charwat 1976.

Diagnostic characters:

1. Dorsal spines are limited to the anterior half of carapace.
2. 1st - 6th abdominal segments smooth.
3. Dorsal spines extending to the middle of rostrum, a solitary dorsal spine at the tip.
4. Ventral spines vary from six to eight, basal spine large, spines diminishing in size anteriorly.
5. Rostrum with lateral laminar crest.

Depth range: Intertidal to 480 m

Distribution: Unalaska, A.K. to San Diego, California



- Figures from Butler, 1980.

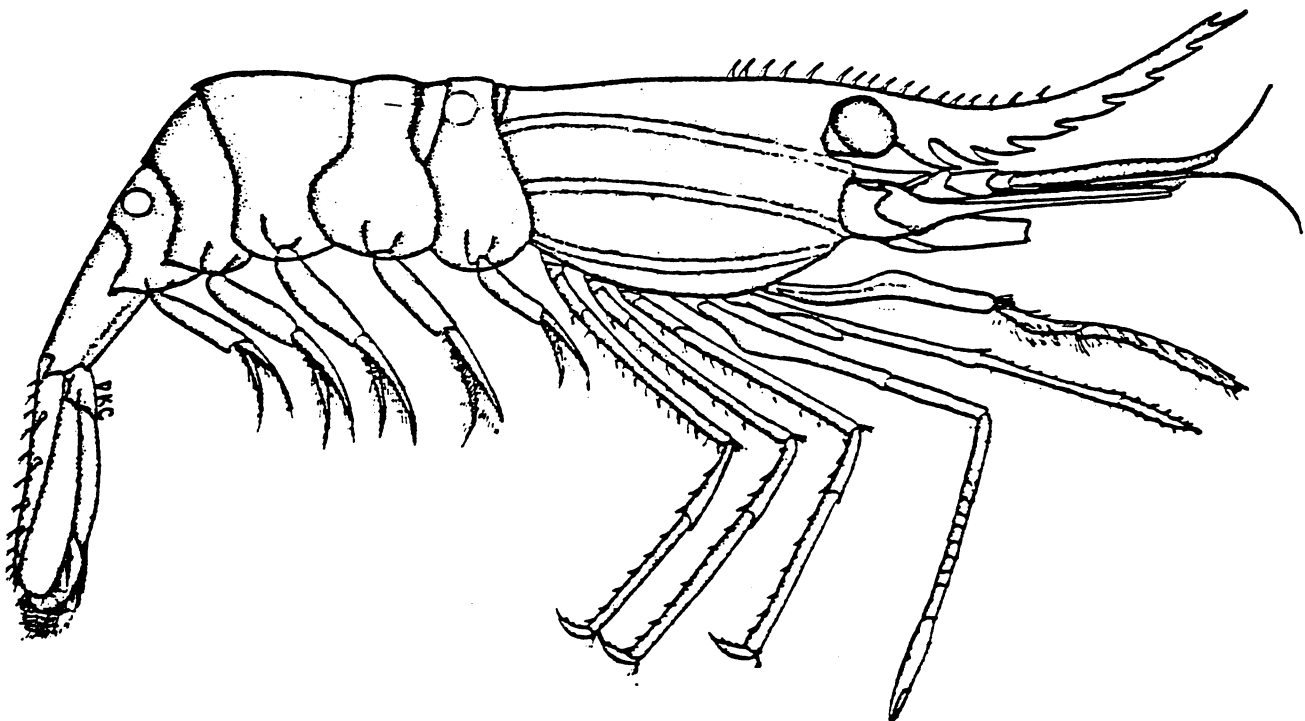


Figure from Word and Charwat, 1976.