

Phylum Arthropoda
Class Malacostraca
Superorder Eucarida
Order Decapoda
Suborder Reptantia
Infraorder Brachyura
Family Pinnotheridae

Pinnixa occidentalis

Coloration:

Defining Characteristics:

- Carapace flat or slightly convex
- **Anterolateral aspect of carapace with granulate or serrate ridge**
- Carapace twice as wide as long
- Carapace not strongly calcified
- Carapace more or less uneven
- Bilobe cardiac crest on frontal margin of carapace
- First legs much shorter than second pair of legs
- Third legs long and strong
- Fourth legs much smaller than third but the same shape
- Ambulatory legs setose
- **Dactylus nearly equal to or exceeding length of propodus on P4**
- Cheliped stout with stout tooth on fixed finger
- **Fixed finger of chela angled obliquely downward (deflexed)**

Illustration

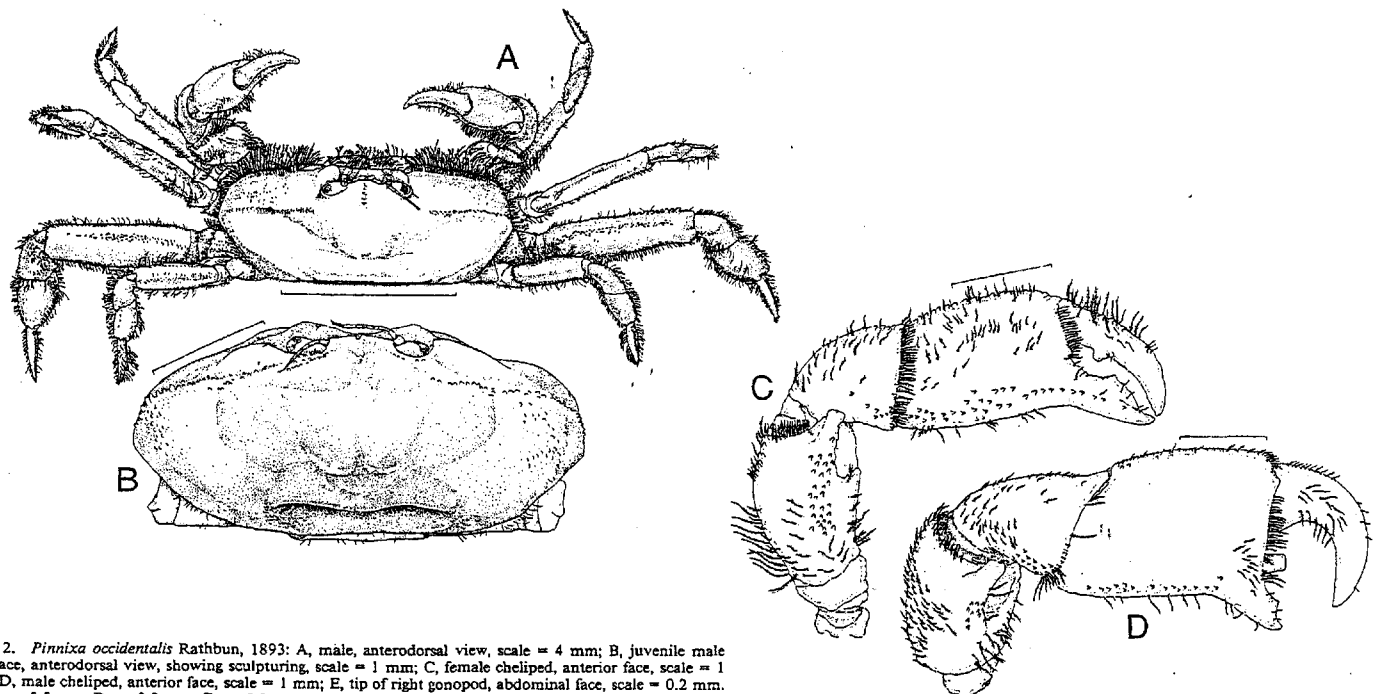


Fig. 12. *Pinnixa occidentalis* Rathbun, 1893: A, male, anterodorsal view, scale = 4 mm; B, juvenile male carapace, anterodorsal view, showing sculpturing, scale = 1 mm; C, female cheliped, anterior face, scale = 1 mm; D, male cheliped, anterior face, scale = 1 mm; E, tip of right gonopod, abdominal face, scale = 0.2 mm. A, D: cw 5.5 mm; B: cw 3.2 mm; C: cw 5.8 mm; E: cw 5.2 mm (all from San Diego, California).