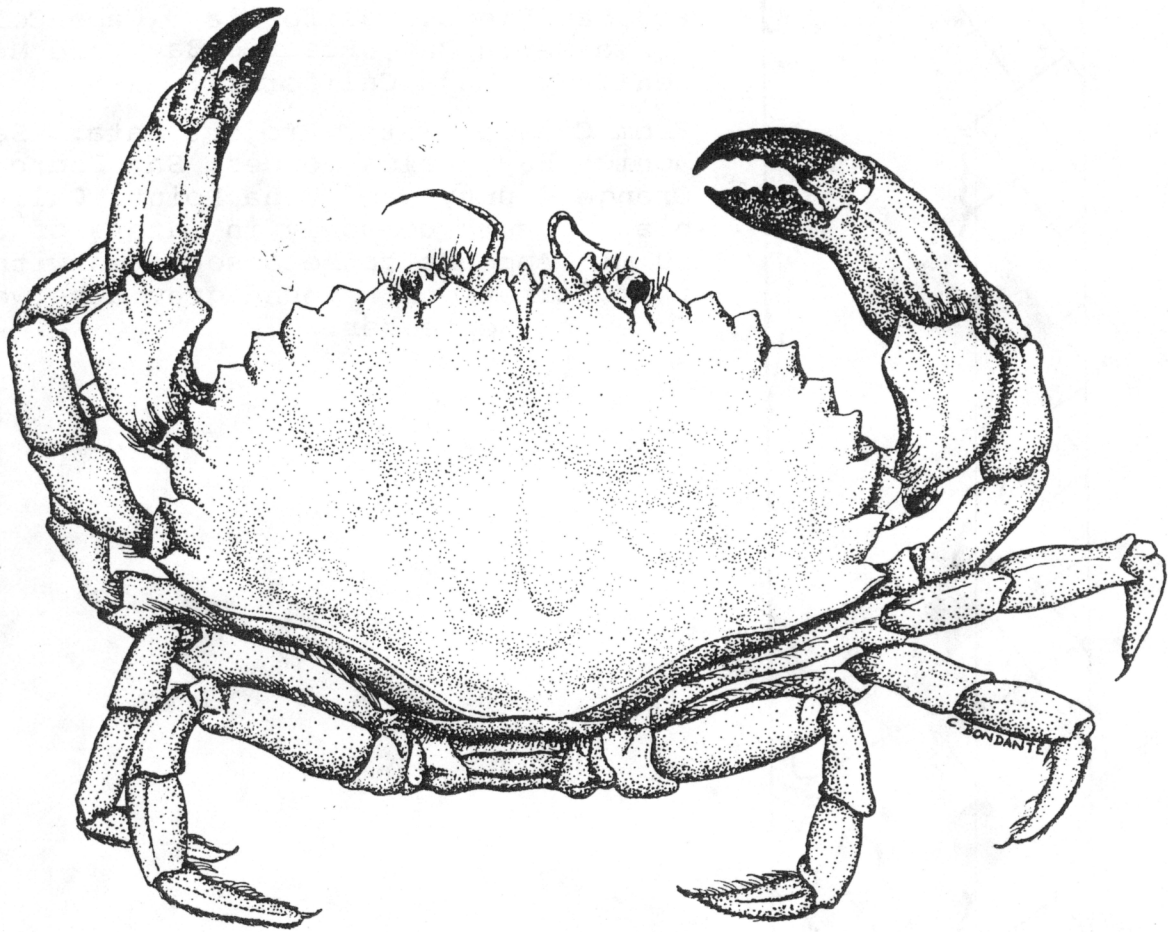


Cancer anthonyi Rathbun 1897



Cancer anthonyi Rathbun 1897

DISTRIBUTION

From Rathbun 1930: Monterey Bay, Morro Bay, Seal Beach, Long Beach, Anaheim Bay, Santa Catalina Island, La Jolla, and San Diego, California. Cape Colnett, Playa Maria Bay, Rosario Bay, and Magdalena Bay, Baja California.

From Coastal Water Project data: Santa Monica Bay, Palos Verdes, San Pedro, Orange County, and Dana Point, California. Occurs commonly in waters of 30 to 60 m. Appears to be associated with rock formations. Found gravid between June and September.

