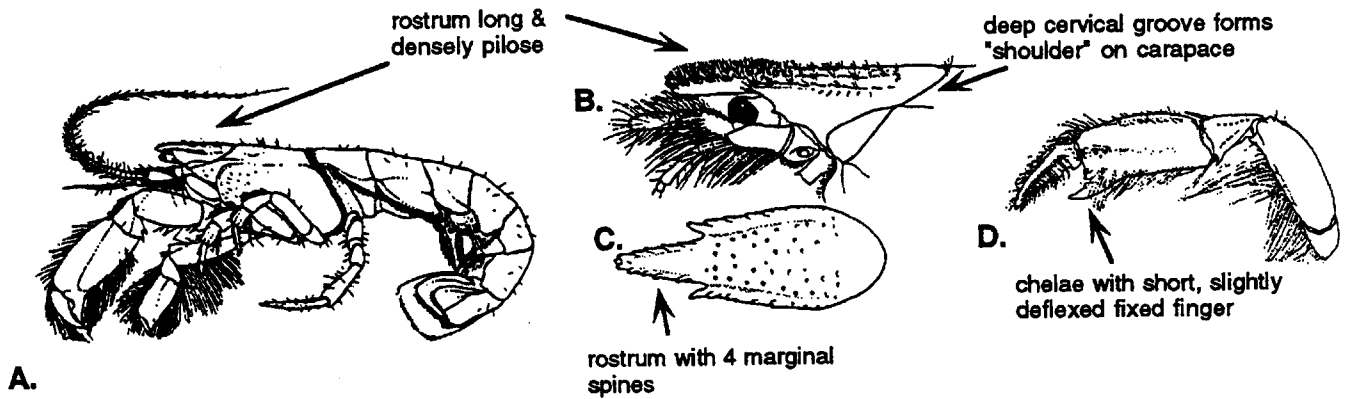
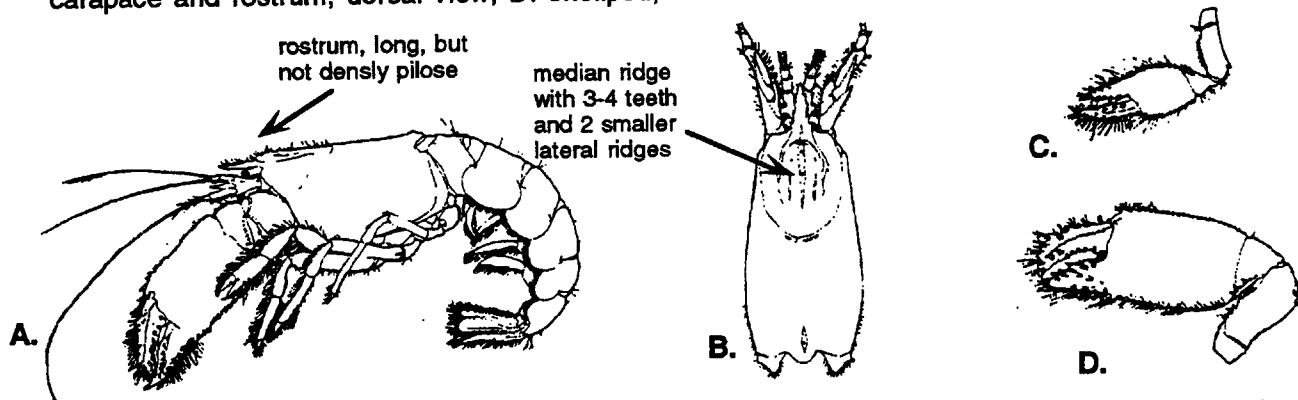


ANOMURAN DECAPODS FOUND OFF PT. LOMA

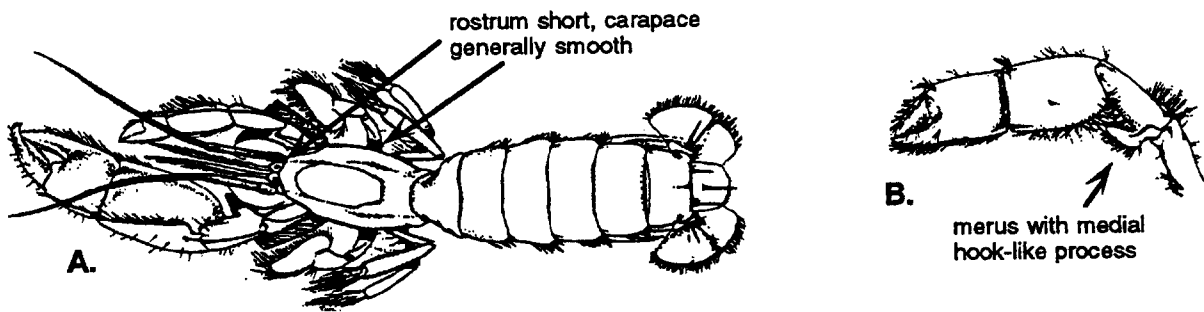
Dean Pasko
11/9/93



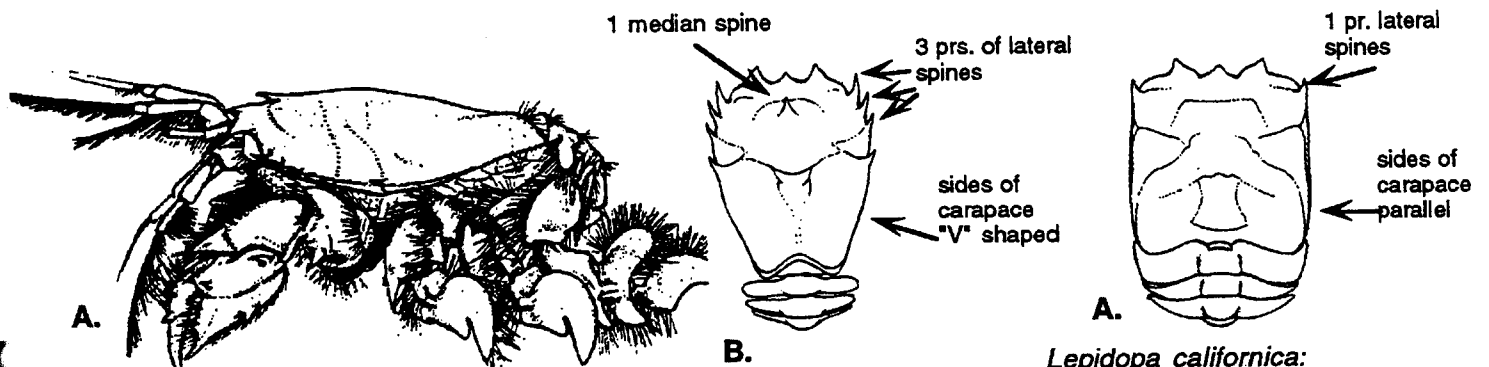
Upogebia lepta: A: whole animal, lateral view; B. anterior cephalothorax, lateral view; C. anterior carapace and rostrum, dorsal view; D. cheliped, lateral view



Acanthaxius spinulicaudus: A: whole animal, lateral view; B. cephalothorax, dorsal view; C. male cheliped, lateral view; D. female cheliped, lateral view



Neotrypaea californiensis: A: whole animal, dorsal view; B. cheliped, lateral view



Blepharipoda occidentalis: A: whole animal, lateral view; B. carapace, dorsal view

Lepidopa californica: A. carapace, dorsal view

IN-HOUSE REFERENCES

- Allen, R. K. 1976. Common intertidal invertebrates of southern California. Peek Publ., Palo Alto, California. 228-257
- Brusca, R. C. 1980. Common intertidal invertebrates of the Gulf of California. 2nd Edition. Univ. Arizona Press, Tucson, Arizona. pp. 258-259
- Cadien, D. B. 1992. Thalassididea of the temperate northeast Pacific. Presentation at the Southern California Association of Marine Invertebrate Taxonomists, April, 1992.
- Hart, J. F. L. 1982. Crabs and their relatives of British Columbia. British Columbia Provincial Museum Handbook, No. 40
- Schmitt, W. L. 1921. The Marine Decapoda Crustacea of California. U. C. Publ. in Zoology, Vol. 23
- Williams, A. B. 1986. Mud shrimps, *Upogebia*, from the eastern Pacific (Thalassinidea: Upogebiidae). Society of Natural History, San Diego, Memior. 14