

Species: Cumella sp A

Museum Number: \_\_\_\_\_

Describer: Undescribed Date: \_\_\_\_\_ Family: Nannastacidae

Common Name: \_\_\_\_\_

Source: \_\_\_\_\_

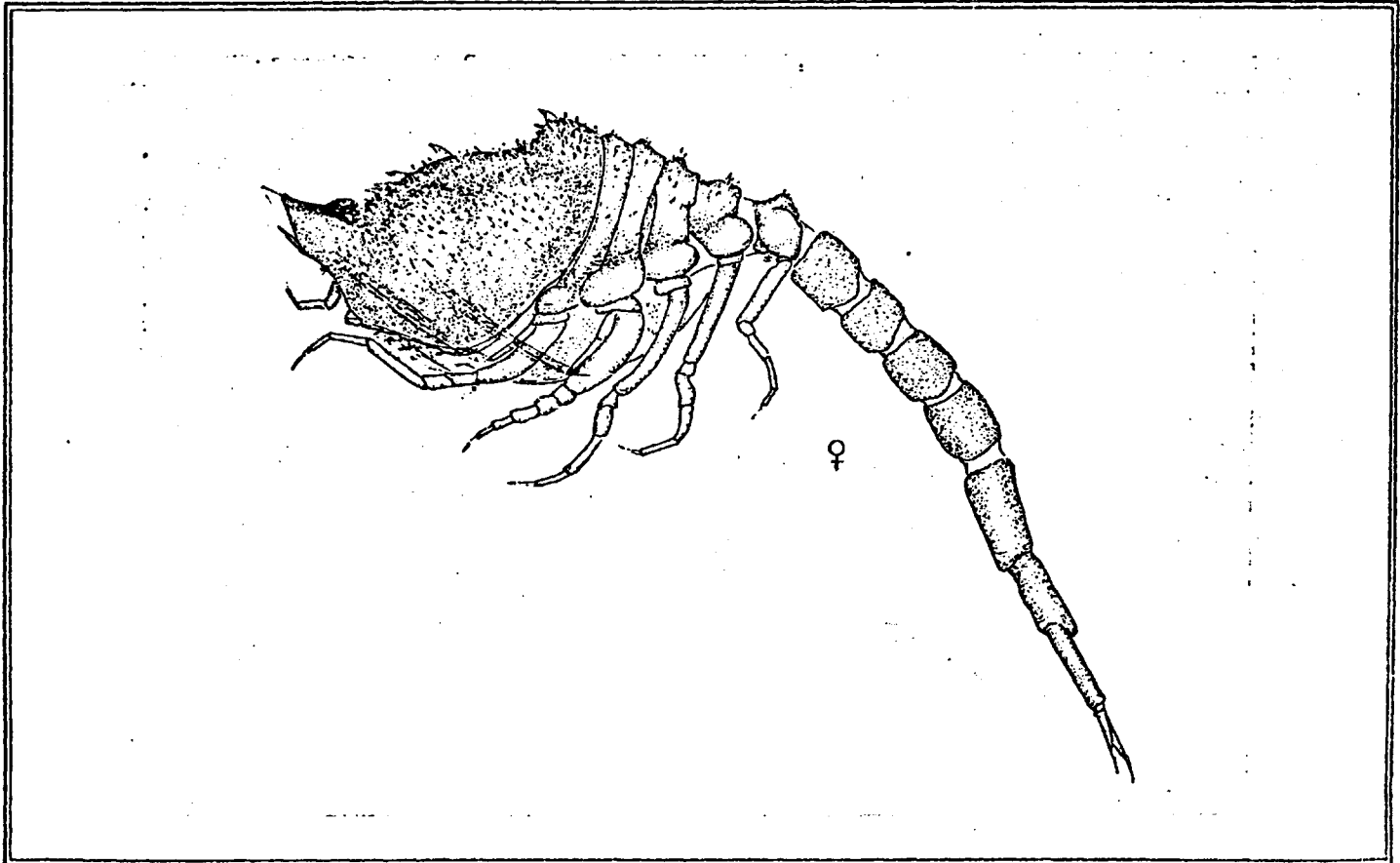
Synonymy: \_\_\_\_\_ Location: \_\_\_\_\_

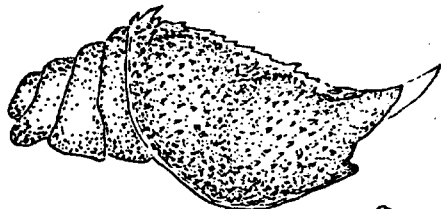
Distinguishing Characteristics:

Carapace covered with short sharp spinules, reduced to low bumps on ventro-lateral edges on carapace

Pronounced spines on dorsal midline, (3) one behind eye, one approximately mid-carapace and one on postero-dorsal knob, all posteriorly directed, middle spine most pronounced

Carapace with anterior and posterior lateral inflations: triangular from above  
♂ with 10 spines and flatter carapace





♀



DD

Ovigerous: J F M A M J J A S O N D

Juvenile: J F M A M J J A S O N D

1 IBP MSGR	2 IBP MSGR	3 IBP MSGR	4 IBP MSGR	
5 IBP MSGR	6 IBP MSGR	7 IBP MSGR	8 IBP MSGR	
9 IBP MSGR	10 IBP MSGR	11 IBP MSGR	12 IBP MSGR	
13 IBP MSGR	14 IBP MSGR	15 IBP MSGR	16 IBP MSGR	
17 IBP MSGR	18 IBP MSGR	19 IBP MSGR	20 IBP MSGR	
21 IBP MSGR	22 IBP MSGR	23 IBP MSGR	24 IBP MSGR	
25 IBP MSGR	26 IBP MSGR	27 IBP MSGR	28 IBP MSGR	
29 IBP MSGR	30 IBP MSGR	31 IBP MSGR	32 IBP MSGR	
33 IBP MSGR	34 IBP MSGR	35 IBP MSGR	36 IBP MSGR	
37 IBP MSGR	38 IBP MSGR	39 IBP MSGR	40 IBP MSGR	41 IBP MSGR
42 IBP MSGR	43 IBP MSGR	44 IBP MSGR	45 IBP MSGR	46 IBP MSGR

Remarks:

---



---



---



---



---



---



---



---



---



---

I Intertidal  
 B Benthic  
 P pelagic  
 M mud  
 S sand  
 G gravel  
 R rock

