

Species: Campylaspis canaliculata

Museum Number: 156

Describer: Zimmer Date: 1936 Family: Nannastacidae

Common Name: \_\_\_\_\_

Source: Zimmer, California Crustacea of the Order Cumacea, (Proc. U.S. Nat. Mus.,  
Vol 83, #2992, 1936)

Synonymy: \_\_\_\_\_ Location: \_\_\_\_\_

Distinguishing Characteristics:

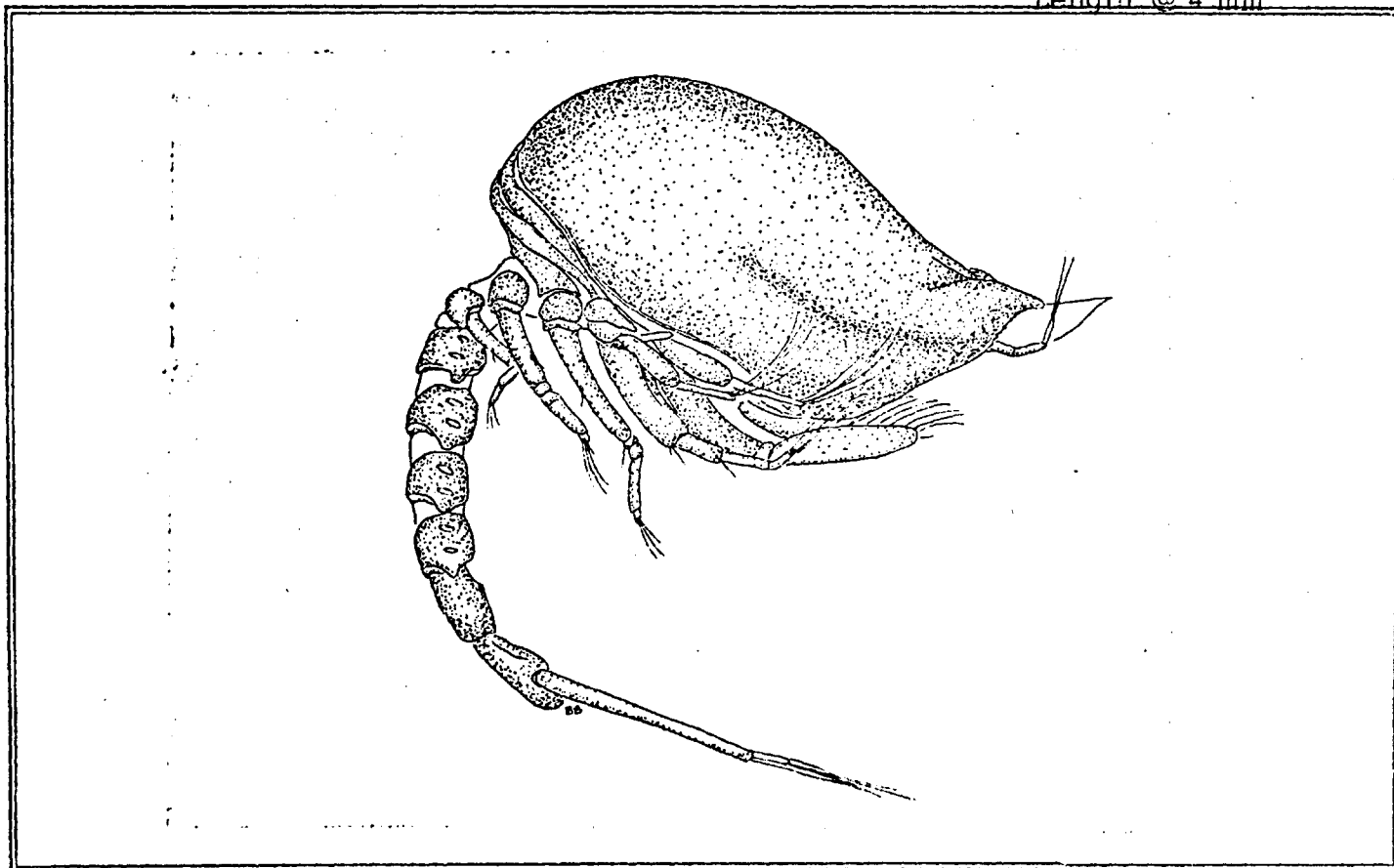
Pseudorostrum somewhat produced anteriorly

Subrostral notch very poorly defined

A narrow distinct groove or furrow runs backward and upward for about half the  
length of the carapace from the pseudorostral margin

Carapace smooth

Length @ 4 mm



male with sternal teeth on first three abdominal segments see vouchers 0791-20

Ovigerous: J F M A M J J A S O N D

Juvenile: J F M A M J J A S O N D

1	2	3	4
IBP	IBP	IBP	IBP
MSGR	MSGR	MSGR	MSGR
5	6	7	8
IBP	IBP	IBP	IBP
MSGR	MSGR	MSGR	MSGR
9	10	11	12
IBP	IBP	IBP	IBP
MSGR	MSGR	MSGR	MSGR
13	14	15	16
IBP	IBP	IBP	IBP
MSGR	MSGR	MSGR	MSGR
17	18	19	20
IBP	IBP	IBP	IBP
MSGR	MSGR	MSGR	MSGR
21	22	23	24
IBP	IBP	IBP	IBP
MSGR	MSGR	MSGR	MSGR
25	26	27	28
IBP	IBP	IBP	IBP
MSGR	MSGR	MSGR	MSGR
29	30	31	32
IBP	IBP	IBP	IBP
MSGR	MSGR	MSGR	MSGR
33	34	35	36
IBP	IBP	IBP	IBP
MSGR	MSGR	MSGR	MSGR
37	38	39	40
IBP	IBP	IBP	IBP
MSGR	MSGR	MSGR	MSGR
42	43	44	45
IBP	IBP	IBP	IBP
MSGR	MSGR	MSGR	MSGR

Remarks:

27 80'

36 7-15 fms

32 630 m

13 280' many

30 61 m

I intertidal  
B benthic  
P pelagic  
M mud  
S sand  
G gravel  
R rock

