

Species: LAMPROPS SP. E. Museum Number: _____

Describer: of MBC Date: _____ Family: _____

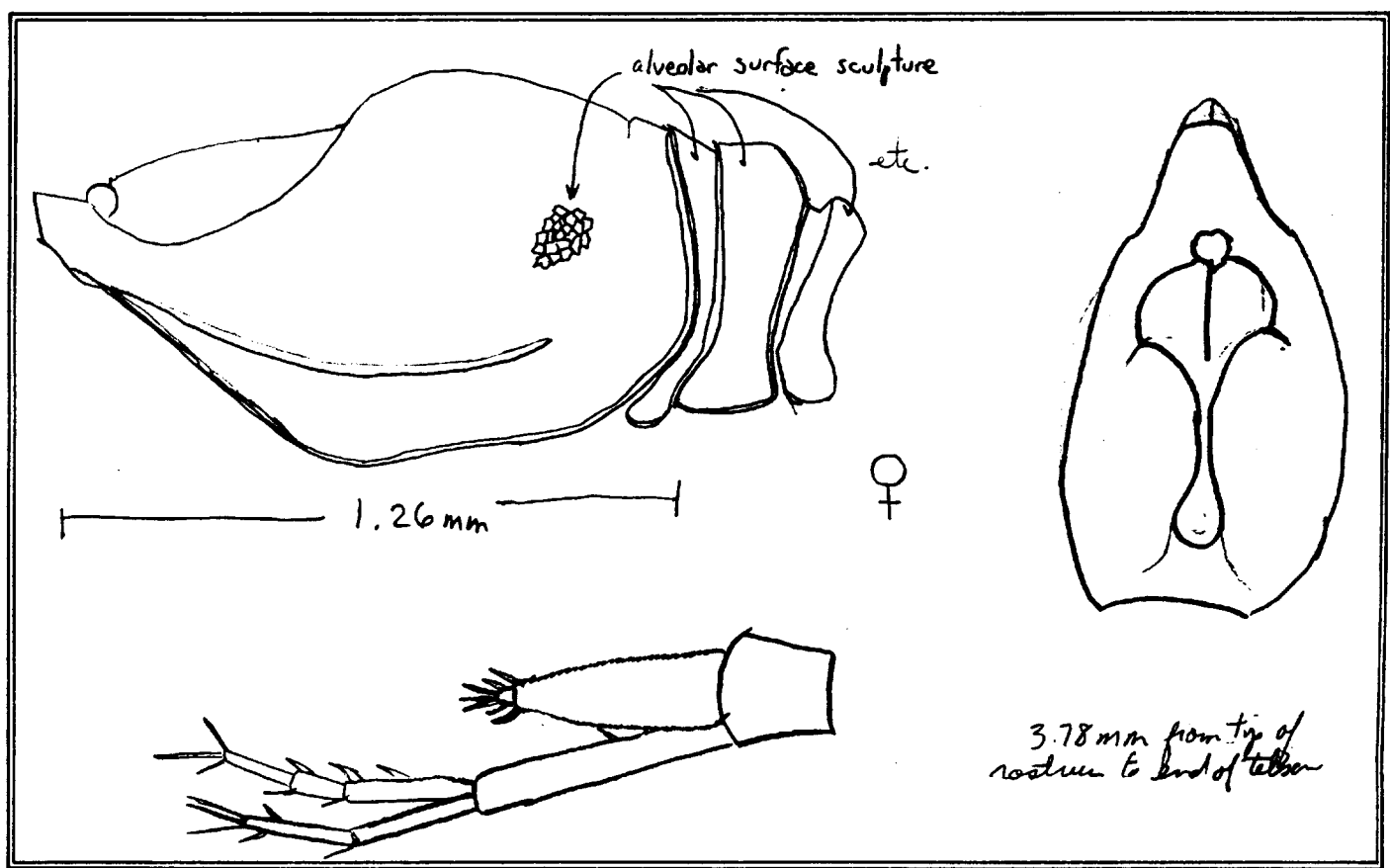
Common Name: _____

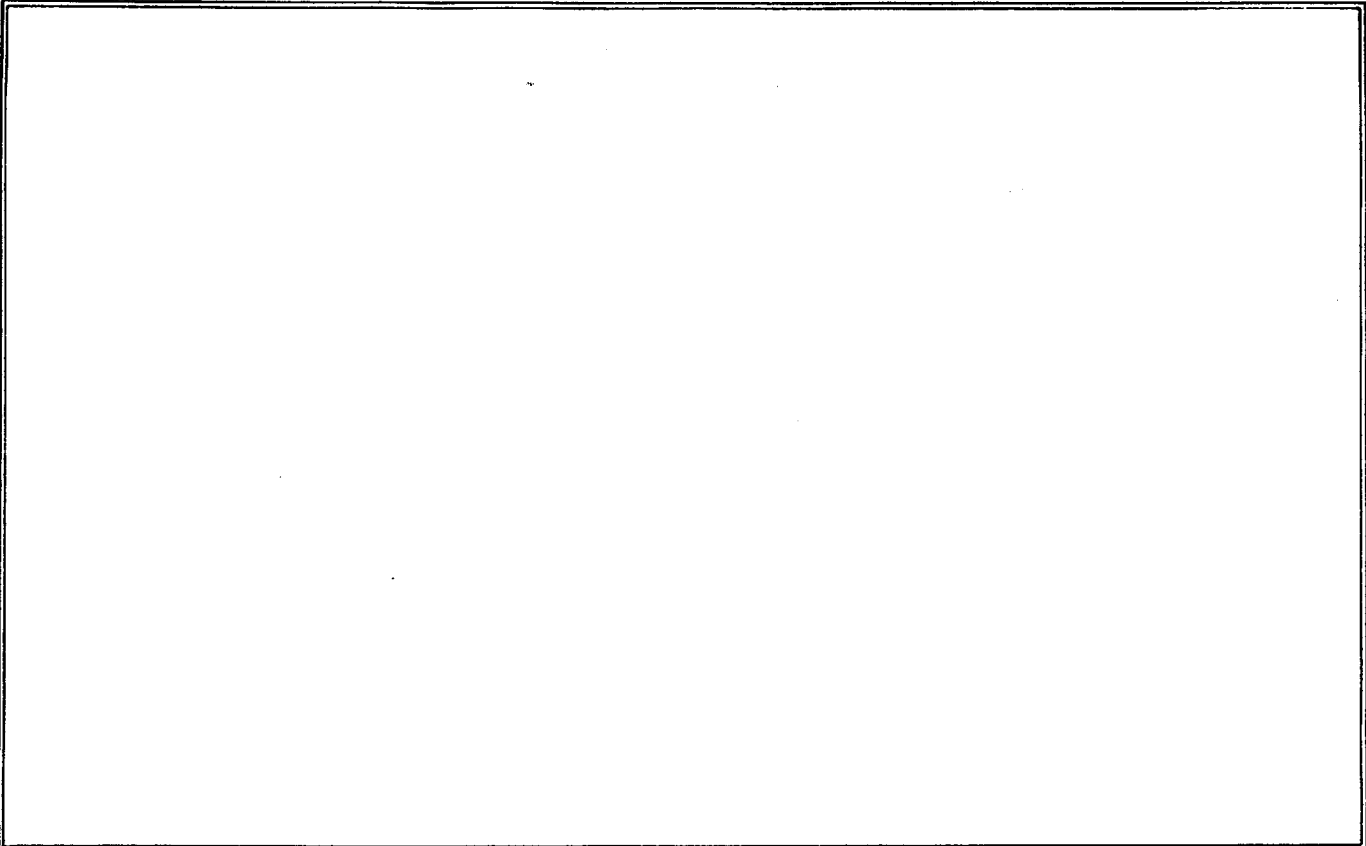
Source: _____

Synonymy: _____ Location: Station 069-855-01 SW of
Pt. Arguello in 3090 ft.

Distinguishing Characteristics:

carapace with single horizontal rib running from base of rostrum to $\frac{3}{4}$ of carapace length
rostrum truncate, pseudo-rostrum short and horizontal, antennal sinus barely detectable, sinuses and anteroventral margin without teeth
telson with 3 terminal subequal spines, 2 ^{shorter} subterminal spines and 2 lateral spines just below subterminals which are of equivalent length; basal $\frac{4}{5}$ of telson without spines, edges upcurled and minutely serrate
endopod longer than exopod and bearing three stout spines on its inner margin





Ovigerous: J F M A M J J A S O N D

Juvenile: J F M A M J J A S O N D

1	2	3	4	
IBP	IBP	IBP	IBP	
MSGR	MSGR	MSGR	MSGR	
5	6	7	8	
IBP	IBP	IBP	IBP	
MSGR	MSGR	MSGR	MSGR	
9	10	11	12	
IBP	IBP	IBP	IBP	
MSGR	MSGR	MSGR	MSGR	
13	14	15	16	
IBP	IBP	IBP	IBP	
MSGR	MSGR	MSGR	MSGR	
17	18	19	20	
IBP	IBP	IBP	IBP	
MSGR	MSGR	MSGR	MSGR	
21	22	23	24	
IBP	IBP	IBP	IBP	
MSGR	MSGR	MSGR	MSGR	
25	26	27	28	
IBP	IBP	IBP	IBP	
MSGR	MSGR	MSGR	MSGR	
29	30	31	32	
IBP	IBP	IBP	IBP	
MSGR	MSGR	MSGR	MSGR	
33	34	35	36	
IBP	IBP	IBP	IBP	
MSGR	MSGR	MSGR	MSGR	
37	38	39	40	41
IBP	IBP	IBP	IBP	IBP
MSGR	MSGR	MSGR	MSGR	MSGR
42	43	44	45	46
IBP	IBP	IBP	IBP	IBP
MSGR	MSGR	MSGR	MSGR	MSGR

Remarks:

- I intertidal
- B benthic
- P pelagic
- M mud
- S sand
- G gravel
- R rock

