

SCAMIT Code: LACO 69

Date Examined: Feb. 10, 1986  
Voucher by: Douglas Diener

Synonymy: Diastylis a sp. n Given 1970  
Diastylis sp. A Myers & Benedict, unpublished

Literature: Given, R. 1970

Diagnostic Characters:

1. Carapace spinose except for large depressed sculptured areas around the eye lobe, at top of head, and behind subrostral notch.
2. Telson approximately 1/2 length of uropodal peduncle.
3. Lateral spines of telson vary from 2-7 pairs.

Distribution: Cape Mendocino to San Diego; 25-190 m.; sand, silt bottoms.

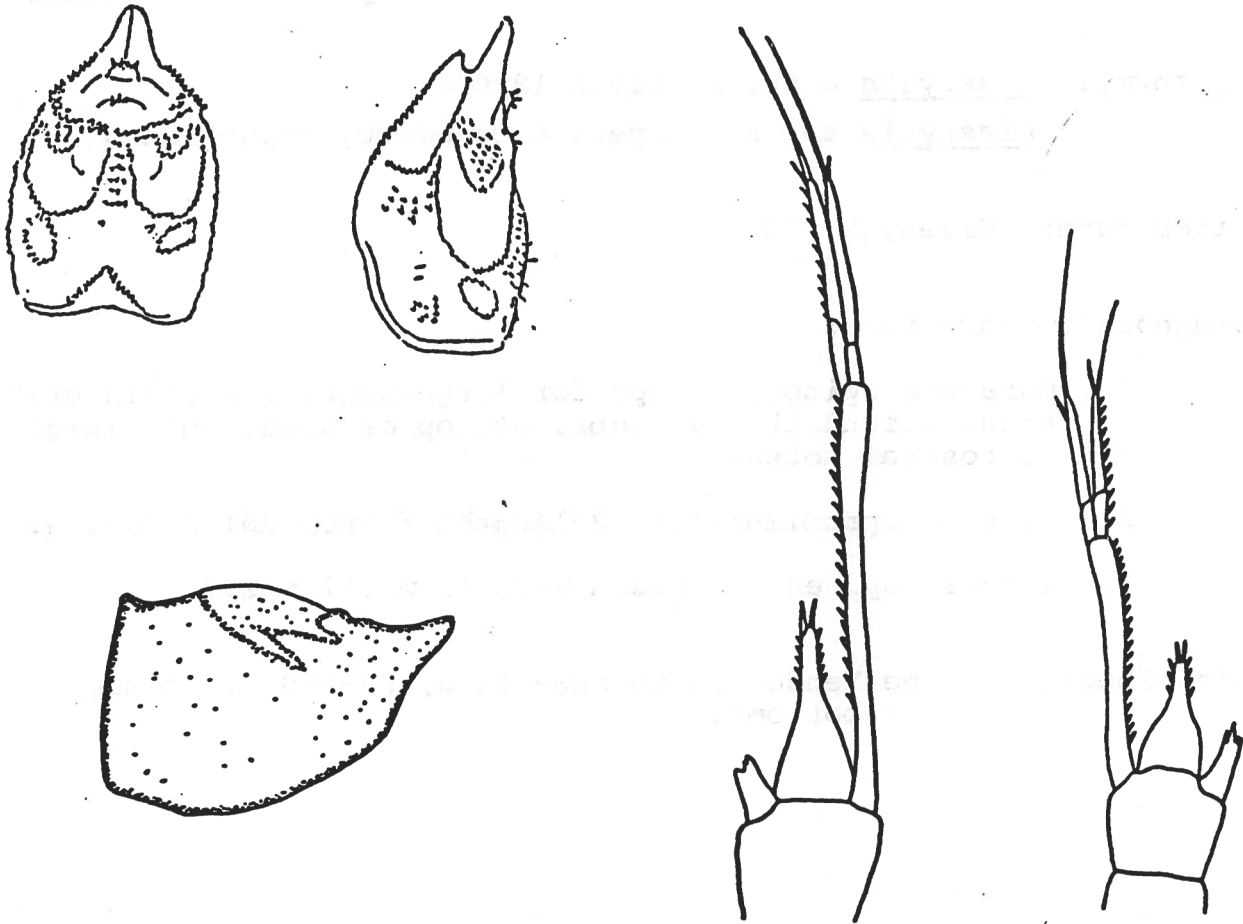


Figure 1. Carapace, dorsal view (from MBC, unpublished)  
Figure 2. Carapace, lateral view (from MBC, unpublished)  
Figure 3. Carapace, lateral view (from Given, 1970).  
Figure 4. Telson, (from Given, 1970)  
Figure 5. Telson (from Given, 1970)