

SCAMIT Code: PL 64

Date Examined: Feb. 10, 1986
Voucher by: Douglas Diener

Synonymy: Colurostylis occidentalis Calman 1912

Literature: Calman, W. T. 1912

Diagnostic Characters:

1. Telson short, sometimes difficult to see.
2. Carapace with 3 parallel oblique ridges.
3. Male with 2 small, ventrally projected, telsonic spines.

Related Species:

No other cumacean has telson and carapace characteristics in this configuration.

Distribution: Oregon to San Diego; 5-65 m.; sand, silt bottoms, and within kelp beds.

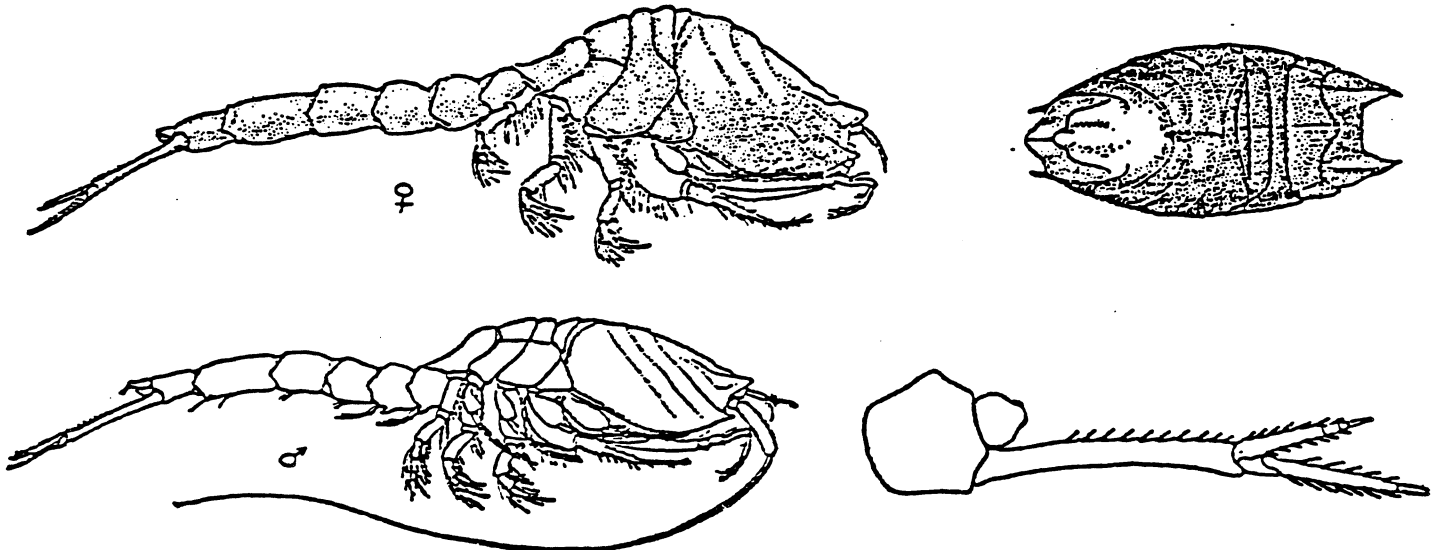


Figure 1. Female, lateral view (from Calman, 1912)
Figure 2. Female carapace, dorsal view (from Calman, 1912)
Figure 3. Male, lateral view (from MBC, unpublished)
Figure 4. Male, telson (from MBC, unpublished)