

Cyclaspis nubila Zimmer 1936
Bodotriidae

SCAMIT Vol. 4, No. 12

SCAMIT Code: MBC 42

Date Examined: Feb. 10, 1986
Voucher by: Douglas Diener

Literature: Zimmer, C. 1936

Diagnostic Characters:

1. Carapace with fine sculpturing, lacking teeth on anterodorsal portion.
2. Carapace profile distinct (see figure).
3. Usually with distinct pigment pattern particularly on carapace, brownish spots at subrostral angle and posterior mid-dorsum of carapace.

Related Species and Character Differences:

This species could be confused with males of Cyclaspis sp. C SCAMIT 1986 (see voucher for Cyclaspis sp. C, this newsletter, to compare carapace profiles).

Distribution: Point Conception to San Diego; intertidal - 80 m.; generally less than 20 m. within kelp beds and sand, silt bottoms.

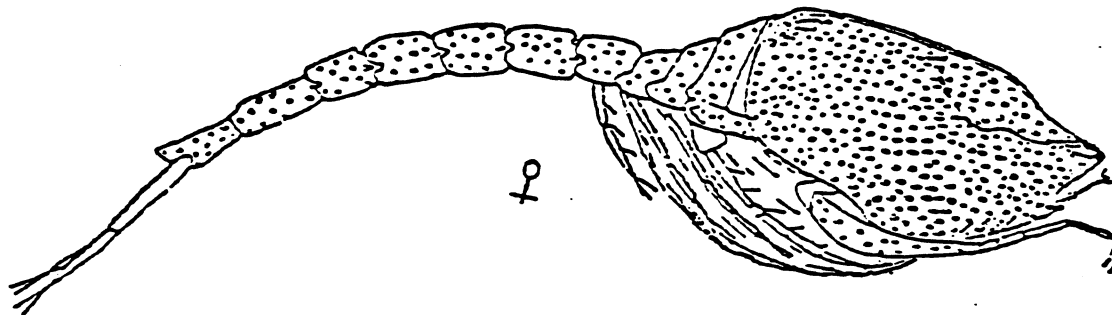
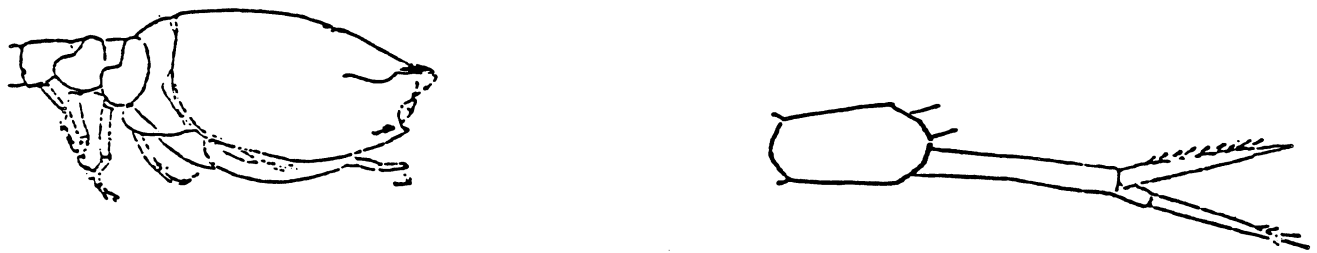


Figure 1. Adult female, x 15 (from Zimmer, 1936)

Figure 2. Telson area, adult female, x 34 (from Zimmer, 1936)

Figure 3. Adult female (from MBC, unpublished)