

Thorlaksonius platypus

Diagnostic Characters:

- Body strongly carinated
- Rostrum strongly developed
- Gnathopod propods lacking median palmer tooth
- Uropod 1 with strong disto-lateral peduncular spine
- Coxa 1 normal, not bent forward distally
- Antenna 1, peduncular segment 1 not produced distally as acute process
- Coxal gill lacking on P7
- Pleon plate 3 subquadrate, hind corner usually acuminate or produced, hind margin not serrated
- Telson keeled proximally
- Peraeon segments 1-4 and urosome segment 3 dorsally and laterally smooth
- Rostrum lateral ridges arise antero-orbitally
- **Antenna 1 flagellum with 25-30 segments**
- **Peraeon segments 6 & 7, and pleon segments 1 & 2, carinae distinctly toothed behind**
- **Coxa 5 lacking lateral ridge, rounded behind**
- **Gnathopod propodus, distal palmar spine enlarged**
- **Rostrum elongate, "duck-bill" shaped**

Illustration:

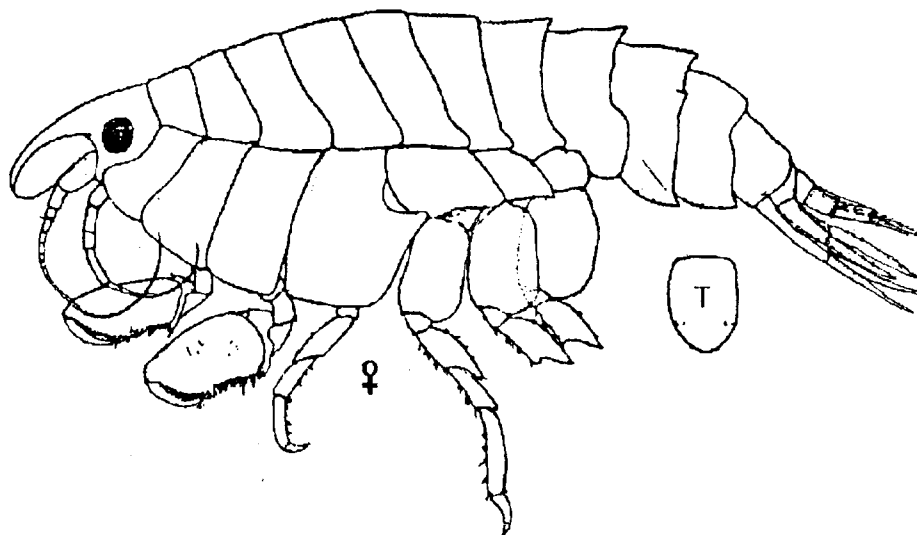


FIG. 27. *Thorlaksonius platypus* (Barnard & Given). ♀ (8.5 mm)
Southern California. (after Barnard & Given, 1960, fig. 1).