

Photis macrotica

Diagnostic Characters:

Male:

G1, palm distinctly excavate

G2, dactyl inner margin without tooth; palmar excavation narrow, palm oblique; article 6 with defining tooth or process on posterior margin

Eye large for the genus

P4, articles 4 and 5 normal slender

Female:

G1, palm convex

Eye large for genus

G2 palm excavate or sinuous, palm without palmar tooth, or defining tooth

P4, articles 4 and 5 normal slender

Illustration:

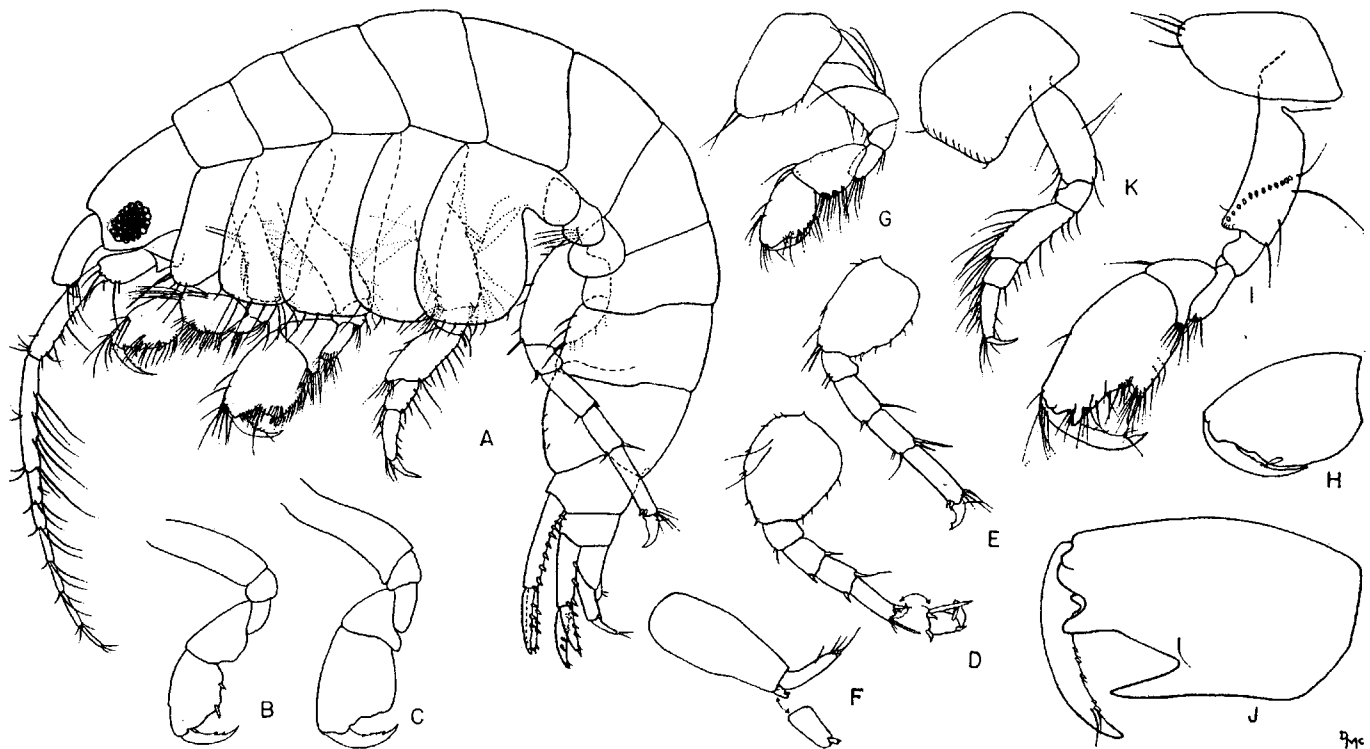


Fig. 19. *Photis macrotica*, n. sp. Female, 3.0 mm, sta. 4939: A, lateral view; B,C, gnathopods 1, 2, minus setae; D,E, peraeopods 3, 4; F, uropod 3. Male, holotype, sta. 4939: G,H, gnathopod 1; I,J, gnathopod 2; K, peraeopod 1.