

Halicoides synopiae

Diagnostic Characters:

- Carpus of G1 & G2 subequal to propodus
- Telson cleft nearly all the way
- Dactyls of gnathopods smooth
- Large rostrum

Illustration:

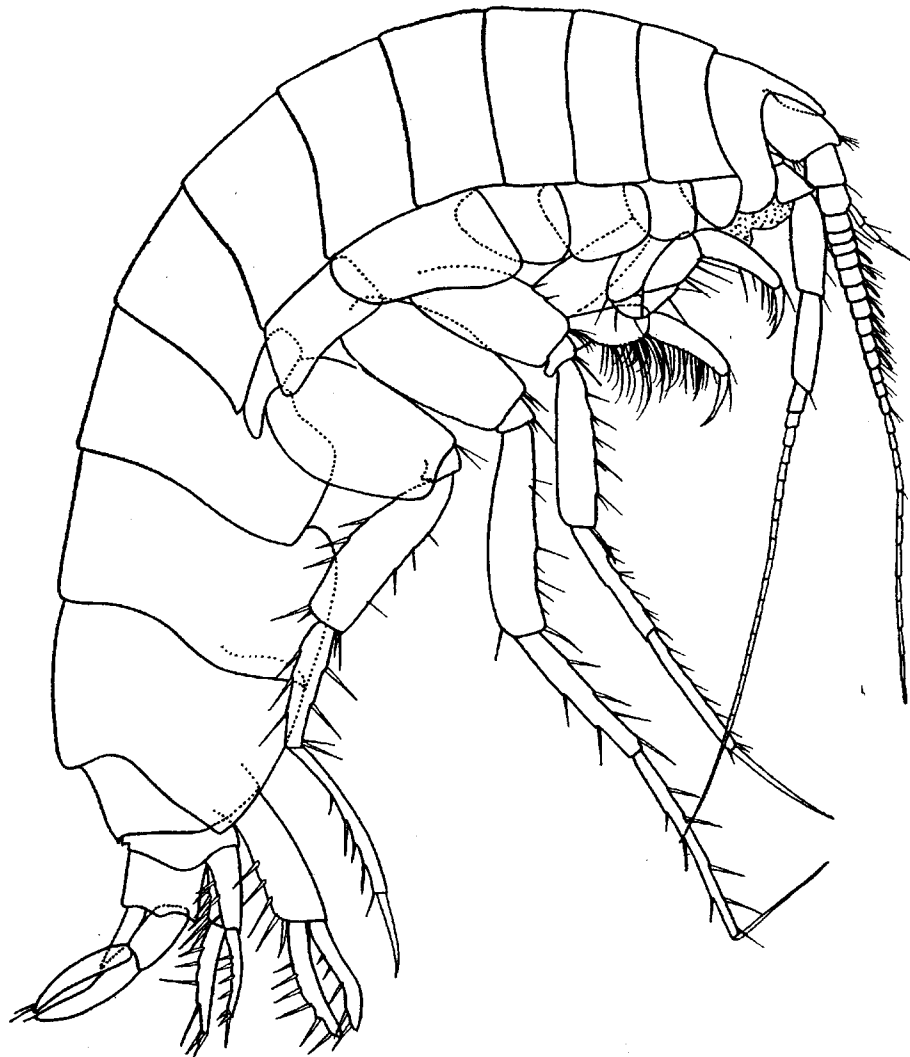


Fig. 4. *Pardisynopia synopiae*, n. g. n. sp. Female, 5.0 mm, sta. 4936: Lateral view.