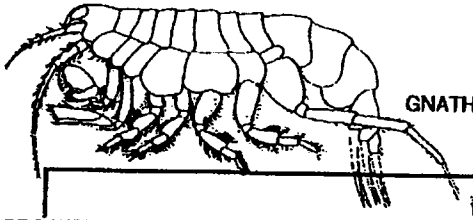


OEDICEROTIDAE OF POINT LOMA

RML 10/93

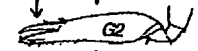


GNATHOPOD 2 SUBCHELATE

GNATHOPOD 2 CHELATE

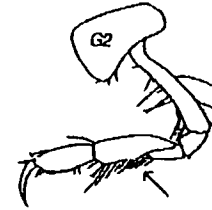
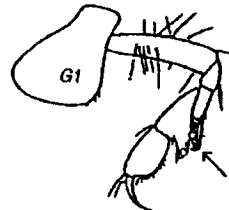
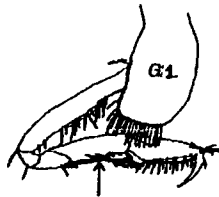
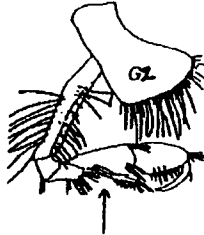
GNATHOPODS WELL DEVELOPED, CARPAL LOBES MODERATELY PRODUCED

GNATHOPODS FEEBLE, CARPAL LOBES SLIGHTLY PRODUCED



GNATHOPOD 2, SEGMENT 5 SIMILAR IN LENGTH TO GNATHOPOD 1; EYES SUBTERMINALLY ON ROSTRUM

GNATHOPOD 2, SEGMENT 5 DISTINCTLY LONGER THAN IN GNATHOPOD 1; EYES LACKING; ROSTRUM LACKING



Westwoodilla caecula

Bathymedon pumilus

Monoculodes

Synchelidium

ROSTRUM ACUTELY POINTED, DEFLEXED; PIGMENT PRESENT ON BODY

ROSTRUM ROUNDED DEFLEXED; BODY NOT PIGMENTED



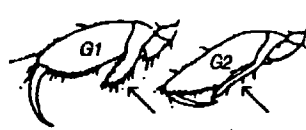
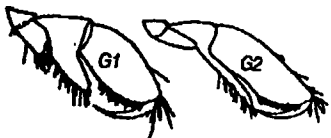
CARPAL LOBES OF GNATHOPODS 1 AND 2 SIMILARLY PRODUCED

CARPAL LOBES OF GNATHOPODS 1 AND 2 DISSIMILAR

Delexibos
Monoculodes norvigicus

Monoculodes emarginatus

Monoculodes hartmanae



GNATHOPOD 1 PALM OBLIQUE; PEREIOPOD 7, SEGMENT 2 WITH SHORT SETAE ON POSTERIOR MARGIN
Pleonite 2 pointed posteriorly

GNATHOPOD 1 PALM TRANSVERSE; PEREIOPOD 7, SEGMENT 2 WITH LONG SETAE ON POSTERIOR MARGIN
Pleonite 2 rounded posteriorly

Synchelidium shoemakeri

Synchelidium rectipalrum

