



# CITY OF SAN DIEGO VOUCHER SHEET

Species: *Hartmanodes* sp SD1

Authority:

Common Synonyms:

*Monoculodes* sp SD1 of CSDMWWD

Taxon: Gammaridea: Oedicerotidae

Date: 15 May 1997

By: Dean Pasko

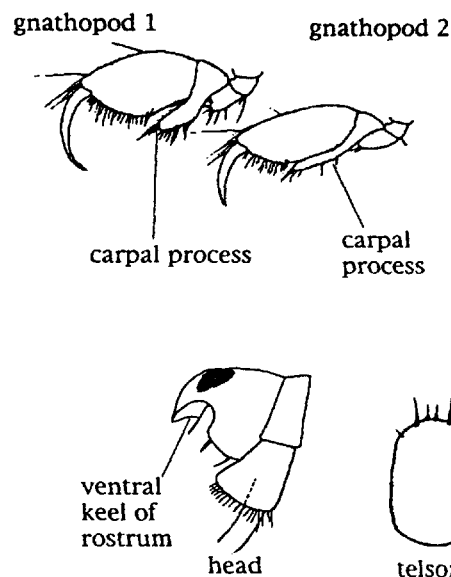
Voucher Specimen(s):

| Station | Date       | Storage Location | Voucher# |
|---------|------------|------------------|----------|
| B-13    | 8 Jan 1997 | Main             |          |

## Characters: (Female only. Male unknown.)

White oedicerotid with well defined dorsal eye.  
 Rostrum strongly deflexed (approx. 90 degrees), not acutely tapered, ventral keel slightly concave.  
 Coxa 1, slightly produced antero-distally (ventrally broadened).  
 Gnathopod 1, carpus (article 5) short (<1/4 article 6 as measured along anterior margin); carpal lobe narrow and elongate.  
 Gnathopod 2 carpal process narrow and moderately long (i.e., may extend up to, but not beyond, defining corner of palm).  
 Gnathopod 1 and 2 with article 6 relatively broad (length = 2.3X width).  
 Telson convex, with 4 terminal setae/spines, and two short setae on outer margin.  
 Pereopod 7 basis without posterior ventral lobe.  
 Posterior margin somewhat produced with medium length setae.

**Illustration:** Digital images also available on the SCAMIT webpage: [www.scamit.org](http://www.scamit.org)



(See figures on page 2.)

## Full Description:

## Related Species:

The species can be easily confused with *M. emarginatus* or *M. hartmanae*.

*Hartmanodes* sp SD1 resembles *M. emarginatus* in the basic characters of the gnathopods (e.g., somewhat broadened propodus of gnathopods 1 and 2), but differs in the shorter carpus and a more elongate carpal lobe on gnathopod 1, a strongly deflexed rostrum (~90 degrees vs. <45 degrees in *M. emarginatus*), and a convex rather than emarginate telson. Compare to figures on page 2.

*Hatmanodes* sp SD1 also resembles *H. hartmanae* which possesses a strongly deflexed rostrum and short carpi of gnathopods 1 and 2. *M. hartmanae* differs primarily in the much more elongate and much narrower propodus and carpal process of gnathopod 2: the propodus is 3.25 longer than wide, and the carpal process extends beyond the palm. Additionally, *H. hartmanae* has a convex ventral keel on the rostrum, a coxa 1 that is not antero-distally or ventrally broadened (i.e., the sides are parallel), and a telson with a nearly straight posterior margin.

## References:

- Barnard, J.L. 1962. Benthic marine amphipoda of southern California: Family Oedicerotidae. Pacific Naturalist, 3:349-371.
- Bousfied, E.L. and A. Chevrier. 1996. The Amphipod family Oedicerotidae on the Pacific Coast of North America. Part 1. The Monoculodes and Synchelidium generic complexes: Systematics and distributional ecology. Amphipacifica. Vol 2 (2): 75-148.

(over)