

Elasmopus holgurus

Diagnostic Characters:

Peraeon generally smooth

Abdomen often mid-dorsally toothed or mucronate, rarely spinose or setose or laterally toothed

Head, anterior lobe rounded, inferior antennal sinus reduced, often notch-like

Eye generally small, rounded, pigmented

Antenna 2 shorter than antenna 1

G1 and G2 in males, markedly unequal, G2 propod and dactyl large, carpus short

E3 produced

Midprocess of male Gnathopod 2 an asymmetrical cone

Epimeron 3 with extended and upturned posteroventral corner

Eyes with dark pigment not bleaching in alcohol

Male pereopod 5, article 2 with weak serrations

Male G2 hand lacking medial hollow

Telson with truncate or slightly concave apices spinose laterally

Illustration:

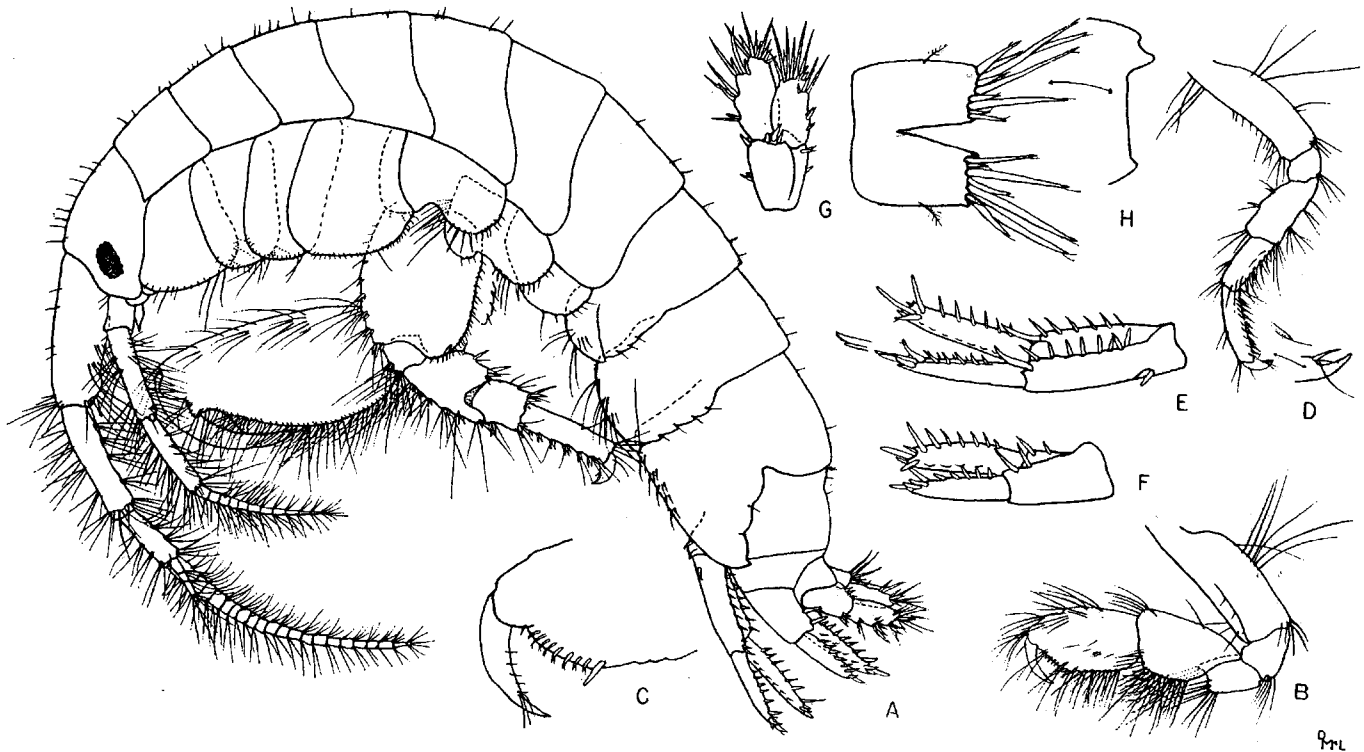


Fig. 14. *Elasmopus holgurus*, n. sp. Holotype, male, 8.0 mm, Barnard sta. 16: A, lateral view; B,C, gnathopod 1; D, peraeopod 2; E,F,G, uropods 1, 2, 3; H, telson.

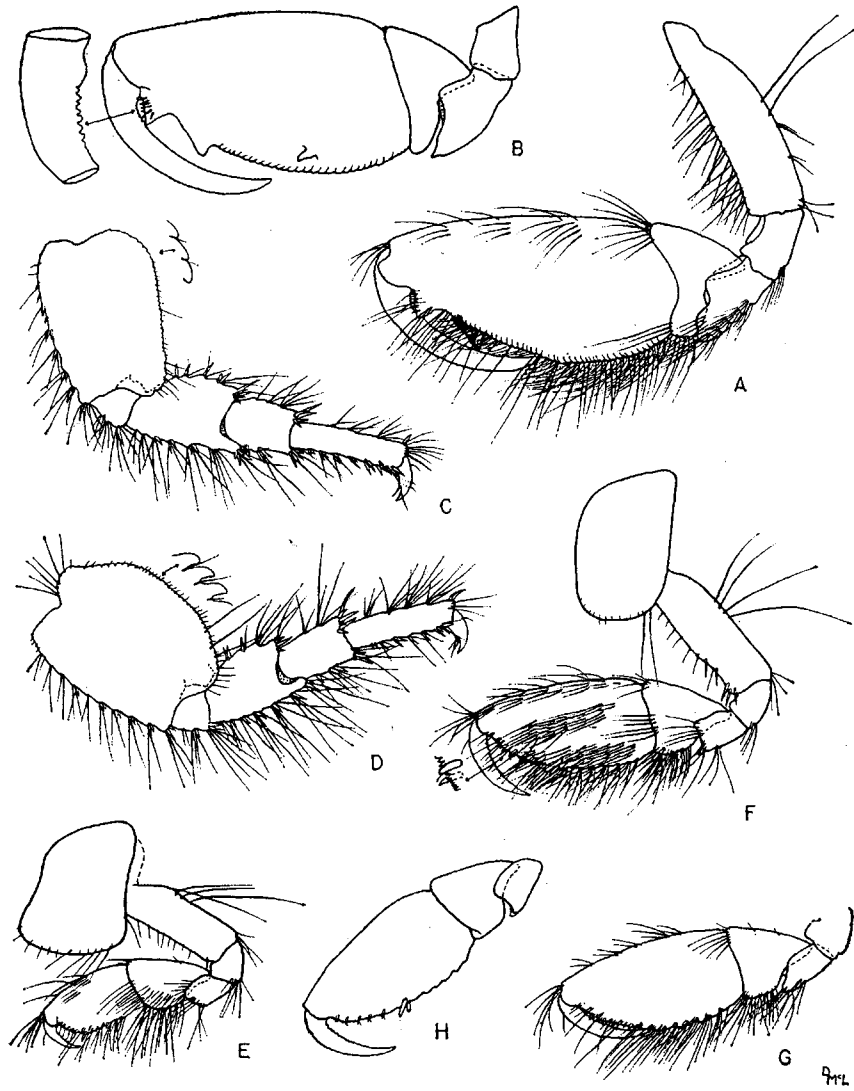


Fig. 15. *Elasmopus holgurus*, n. sp. Holotype, male, 8.0 mm, Barnard sta. 16: A,B, gnathopod 2; C,D, peraeopods 4, 5. Female, 5.5 mm: E, gnathopod 1; F,G,H, gnathopod 2.