

Elasmopus antennatus

Diagnostic Characters:

Peraeon generally smooth

Abdomen often mid-dorsally toothed or mucronate, rarely spinose or setose or laterally toothed

Head, anterior lobe rounded, inferior antennal sinus reduced, often notch-like

Eye generally small, rounded, pigmented

Antenna 2 shorter than antenna 1

G1 and G2 in males, markedly unequal, G2 propod and dactyl large, carpus short

E3 produced

Body dorsally smooth

G1, male, propodus rectangular, palm oblique

G2, palm very oblique, heavily setose

Right and left G2 similar

E1-3, hind corner with small tooth curved upwards

Inner ramus of U3 narrower and shorter than outer ramus

Illustration:

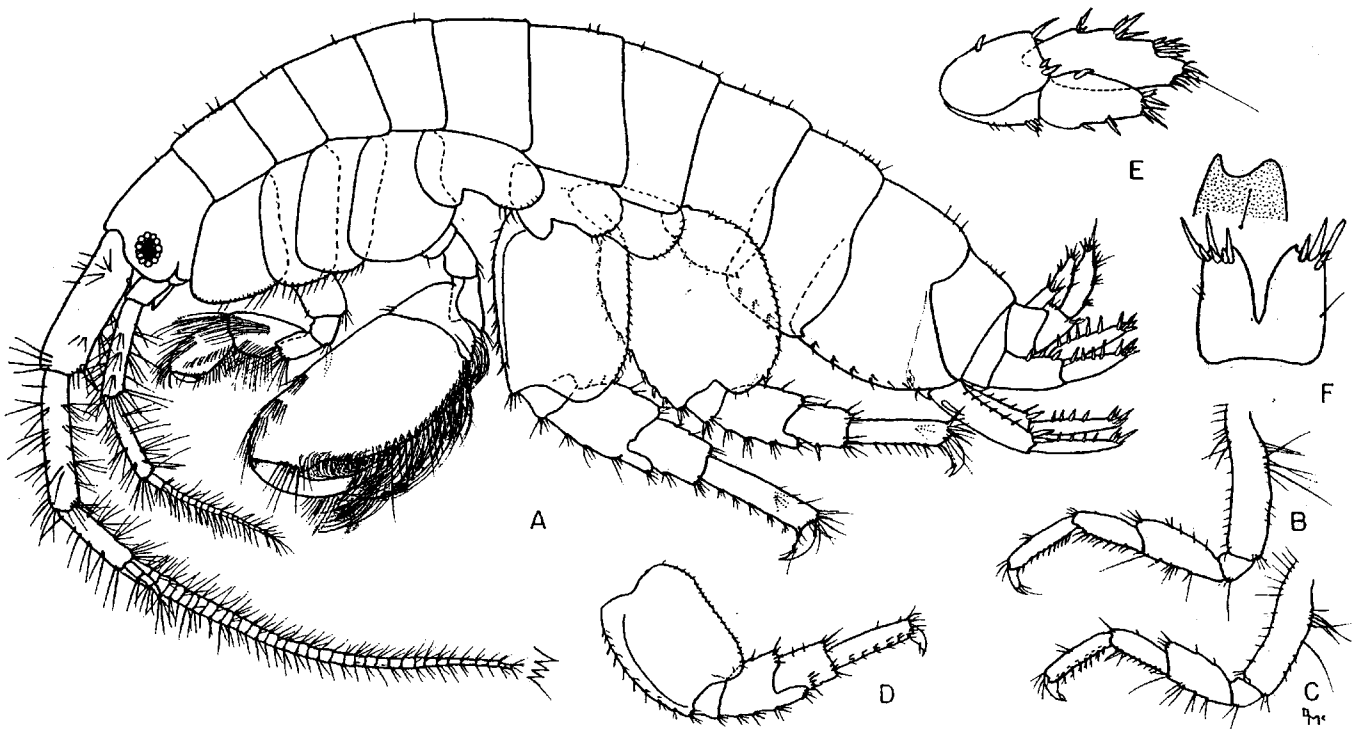


Fig. 12. *Elasmopus antennatus* (Stout). Male, 9.0 mm, sta. 4822: A, lateral view; B,C,D, peraeopods 1, 2, 3; E, uropod 3; F, telson.

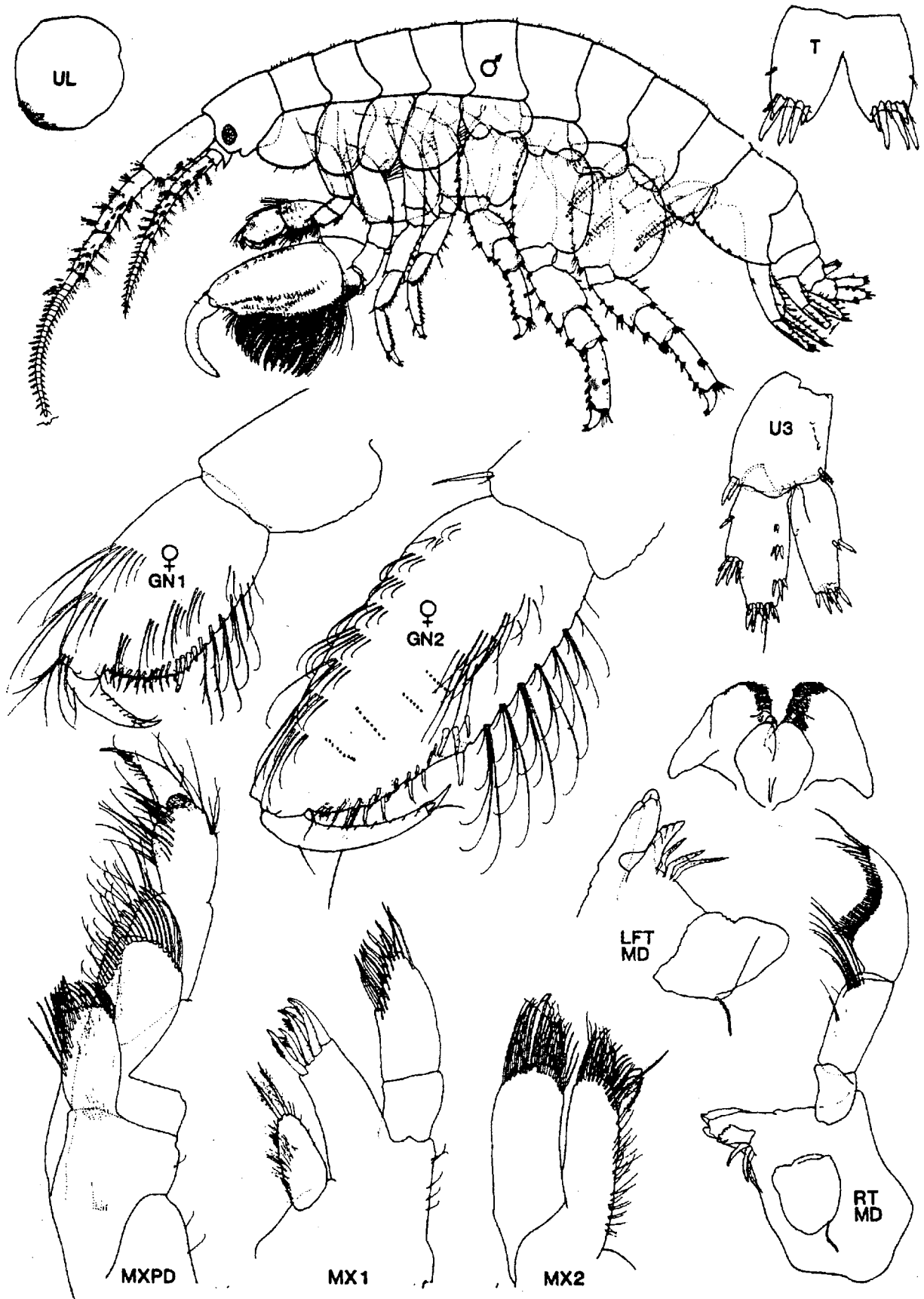


Fig. 12. *Elasmopus* cf. *antennatus* (Stout). Male 8.5mm, Vancouver I., Gooding Cove, B. C.