

SCAMIT Code: MBC 24

Date examined: January 14, 1985
Voucher by: Ann Martin

Literature:

Barnard, J.L. 1967. Bathy 1 and abyssal gammaridean amphipoda of Cedros Trench, Baja California. U.S. Nat. Mus. Bull. 260:205 p.

Holmes, S.J. 1908. The Amphipoda collected by the U.S. Bureau of Fisheries Steamer, "Albatross", off the west coast of North America, in 1903 and 1904, with descriptions of a new family and several new genera and species. Proc. U.S. Nat. Mus. 35:489-543.

Diagnostic characters:

1. Long antennae; small head; mouthparts projecting below, not hidden by coxal plates (Fig. 1).
2. 3rd pleon epimeron produced; 4th pleonite carinate (Fig. 1).
3. Gnathopod 1 subchelate, article 6 subrectangular and shorter than article 5 (Fig. 2).
4. Gnathopod 2 subchelate, article 6 narrowed distally (Fig. 3).

Variability:

Barnard (1967) noted the type specimen had a multispinose dactyl on the left pereopod 3 which is not a typical character.

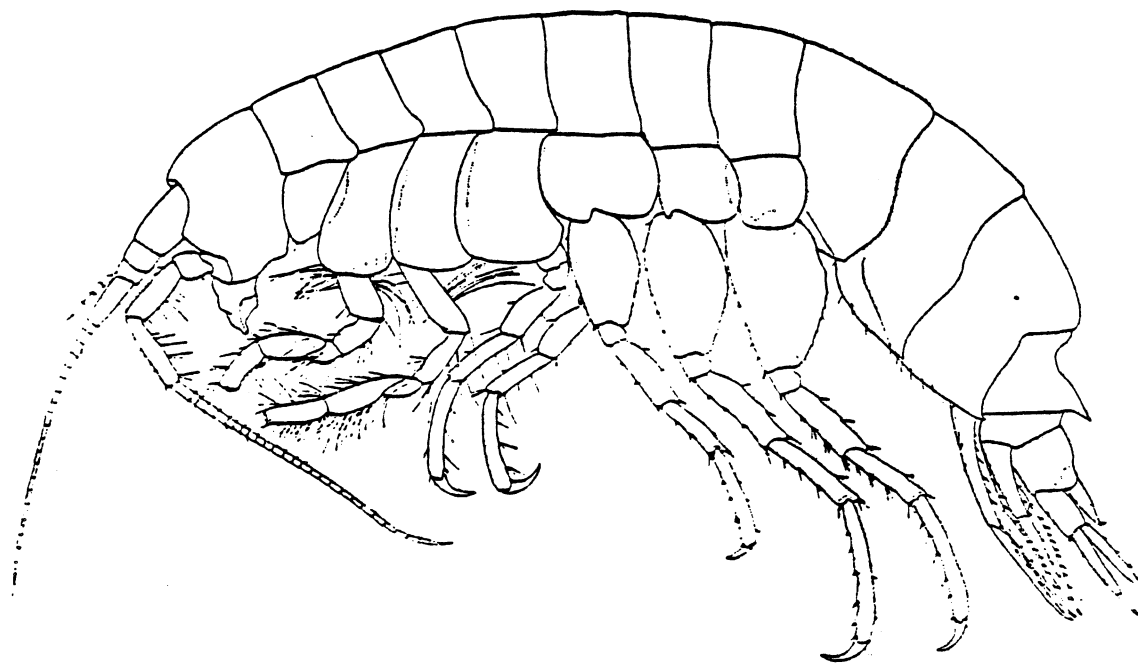


Figure 1. Lateral view (From Barnard, 1967)

Depth range:
183-521 m.

Distribution:
Southern California, Monterey Canyon.

Additional comments:

Holmes (1908) commented that this genus is a primitive lysianassid. It shows more "typical gammarid" features with the long antennal peduncle and subchelate gnathopod 2. The elongate article 3 of the gnathopods are lysianassid features.

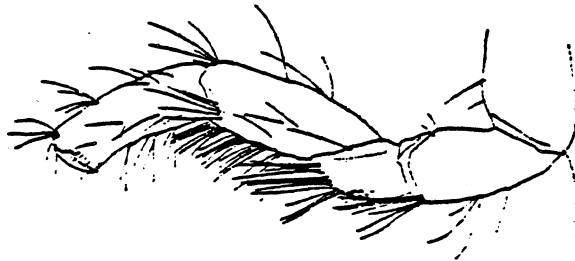


Figure 2. Gnathopod 1 (from Barnard, 1967)

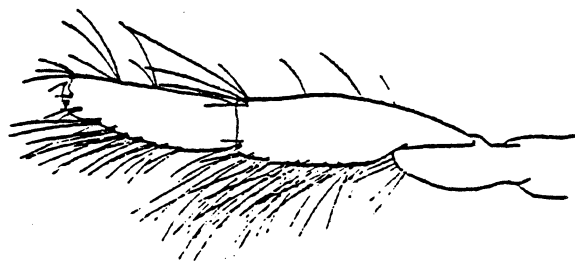


Figure 3. Gnathopod 2 (from Barnard, 1967)