

SCAMIT Code: HYP 42

Date examined: January 14, 1985
Voucher by: Ann Martin

Literature:

Barnard, J.L. 1964. Marine amphipoda of Bahia de San Quintin, Baja California
Pac. Nat. 4(3): 55-139.

Diagnostic characters:

1. 3rd pleon epimeron subquadrate (Fig. 1).
2. Pereiopod dactyls short; length of article 7 less than 30% of article 6 (Fig 1).
3. Gnathopod 1 subchelate; article 6 slightly elongate and tapering distally article 7 with tooth on inner margin (Fig. 2).
4. Gnathopod 2 chelate (Fig. 3).

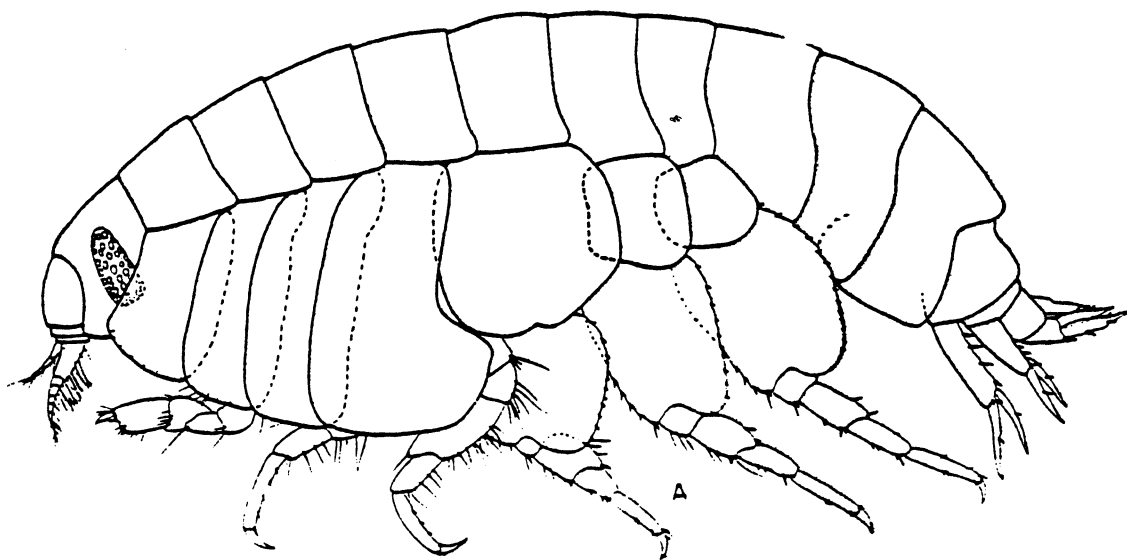


Figure 1. Orchomene anaquela (from Barnard, 1964)

Depth range:
30-100 m.

Distribution:
Southern California.

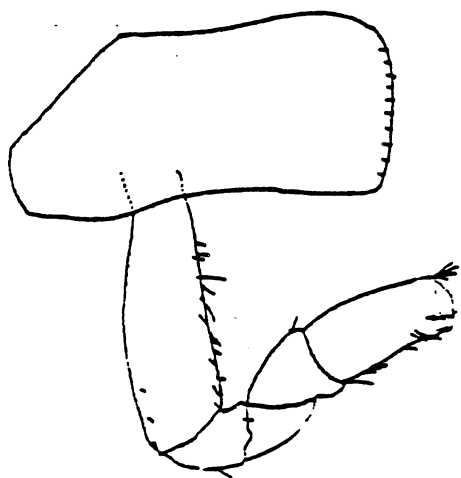


Figure 2. Gnathopod 1



Figure 3. Gnathopod 2

