

SCAMIT Code: HYP37

Date examined: October 15, 1984

Literature:

Barnard, J.L. 1959. Liljeborgiid amphipods of southern California coastal bottoms, with a revision of the family. Pac. Nat. 1:12-28.

Diagnostic Characters:

1. Dark pigment pattern well retained on coxal plates, gnathopods, and pereopods 5-7 (Fig. 1 and 2); no pigment on antenna 1.
2. Antennae short (barely reaching gnathopods).
3. Rami on uropod 3 tear-drop shaped, short and broader than other species (Fig. 3).
4. Articles 4,5, and 6 on pereopod 7 broad.

Variability:

The intensity of pigment in preserved specimens varied from very dark to barely visible. Pereiopod 7 and uropod rami vary in broadness, but uropod rami retain their characteristic tear-drop shape.

Related species and character differences:

This species is difficult to distinguish from L. melanica; the pigment pattern, broad pereiopod 7 and shape of uropod 3 rami are good characters to separate the two species.

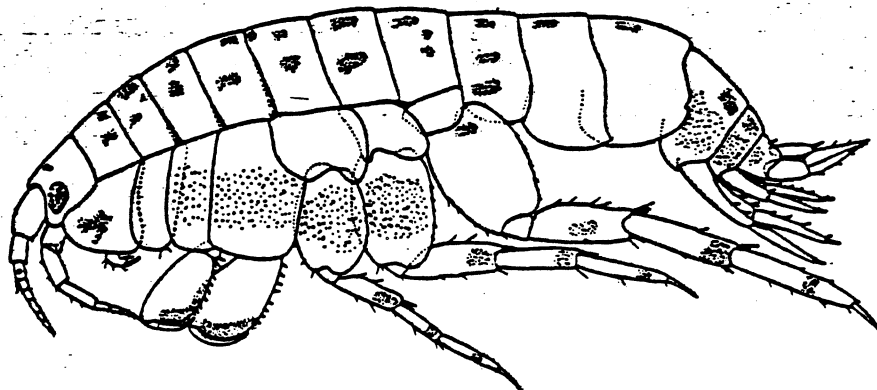


Fig. 1. Female L. diffusa (From Barnard, 1959).

Depth range: 25m - 60m

Distribution:
Pt. Conception to the Mexican Border

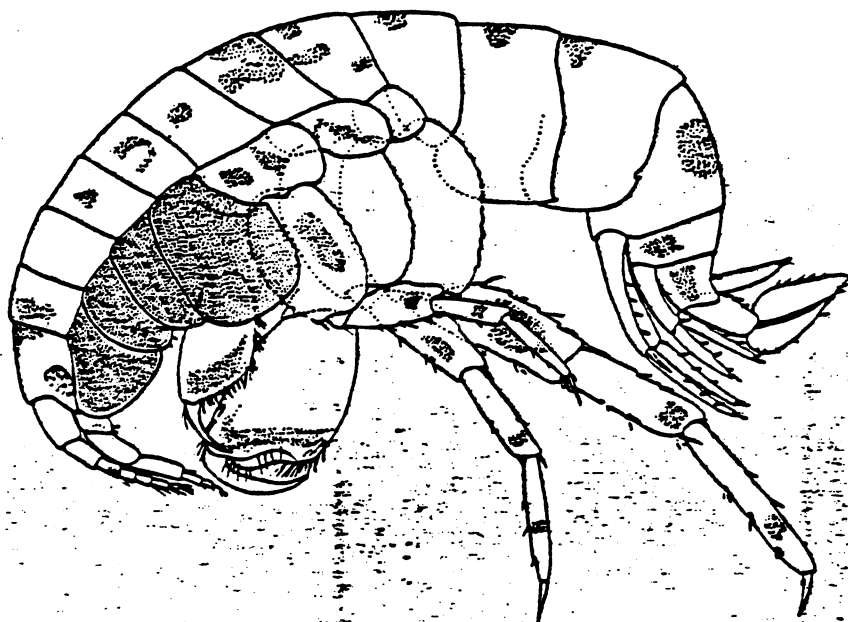
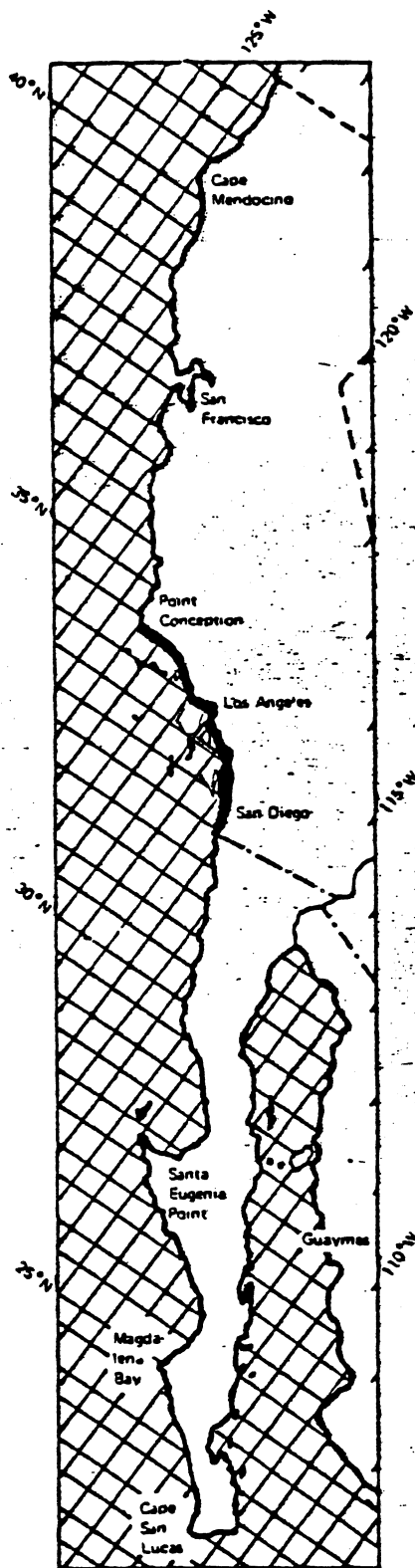


Fig. 2. Male L. diffusa (From Barnard, 1959).



Fig. 3. Male uropod 3 (From Barnard, 1959).