

Listriella diffusa

Diagnostic Characters:

- Antennae just reaching gnathopods
- E1 rounded
- P7 broad, paddle shaped
- U3 rami broad, tear drop shaped in male or slightly broad in female, both rami sub equal
- E3 notched
- Antennae 1, article 2 without pigment distally
- Body pigmentation and eyes present Article 5 of gnathopods 1 and 2 weakly produced, thick, blunt, and not produced along posterior margin of article 6
- Outer ramus of uropod 3 bi-articulate

Illustration:

Fig. 5. *Listriella diffusa* n. sp. A-C Male, 3.25 mm., sta. 4841. A, B, gnathopod 1, 2; C, uropod 3. D-G. Female, 3.5 mm., sta. 4769. D, E, gnathopods 1, 2; F, uropod 3; G, telson.

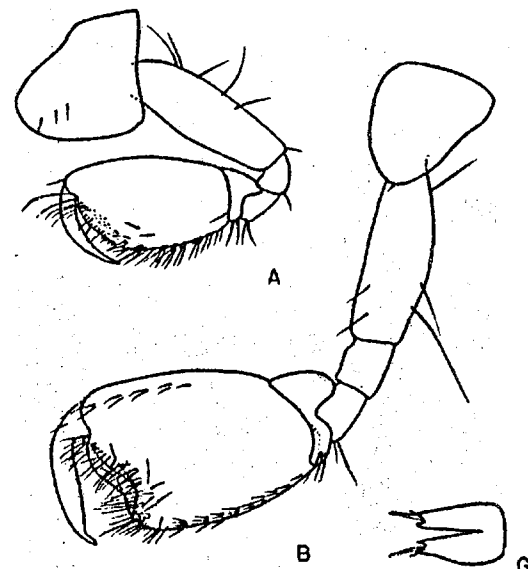
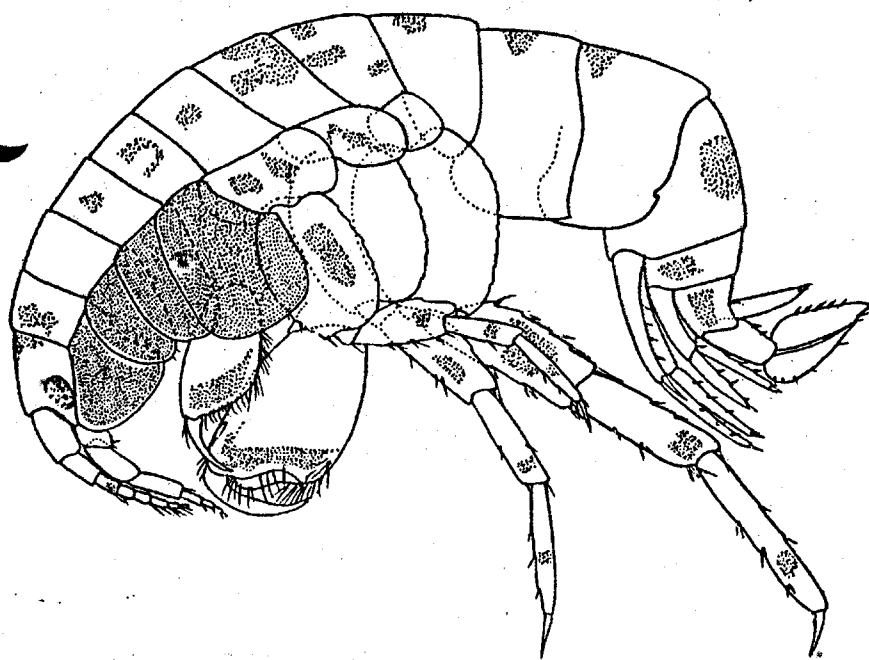


Fig. 3. *Listriella diffusa* n. sp. The male, holotype specimen, 3.5 mm. long from sta. 4769.

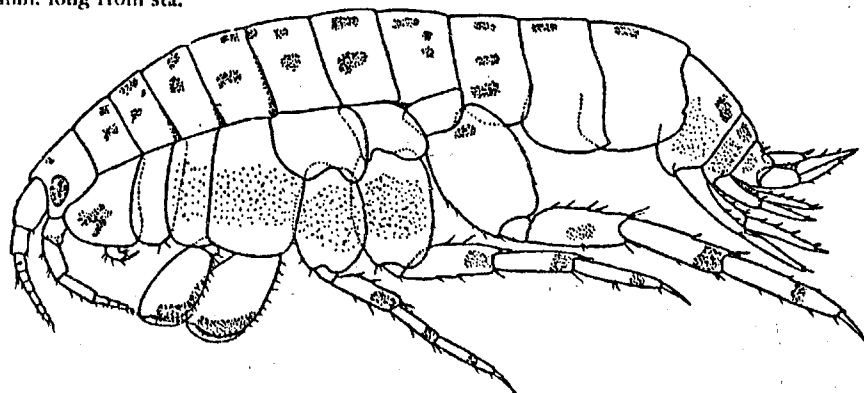
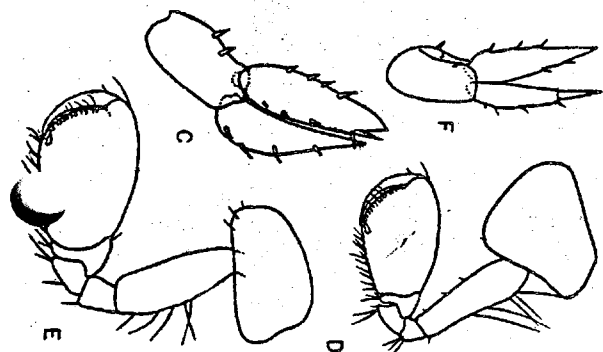


Fig. 4. *Listriella diffusa* n. sp. A female specimen 3.5 mm. long from sta. 4769.