

Ventojassa ventosa

Diagnostic Characters:

Accessory flagellum composed of 2 long articles tipped with a minute third

G1, article 5, 1.3 times longer than article 6, the palm slightly oblique, the defining corner broadly rounded and bearing one slender spine

G2 with long anterior distal lobe; article 5 short, with distinct protrusion on proximal end; palm slightly oblique, defined by a cusp supporting a spine, bearing a larger, shallow, but sub-acute process near finger hinge, the middle of palm bearing a smaller protrusion and a large spine.

U3 with two fully developed rami

G1, article 5, much longer than article 6

Illustration:

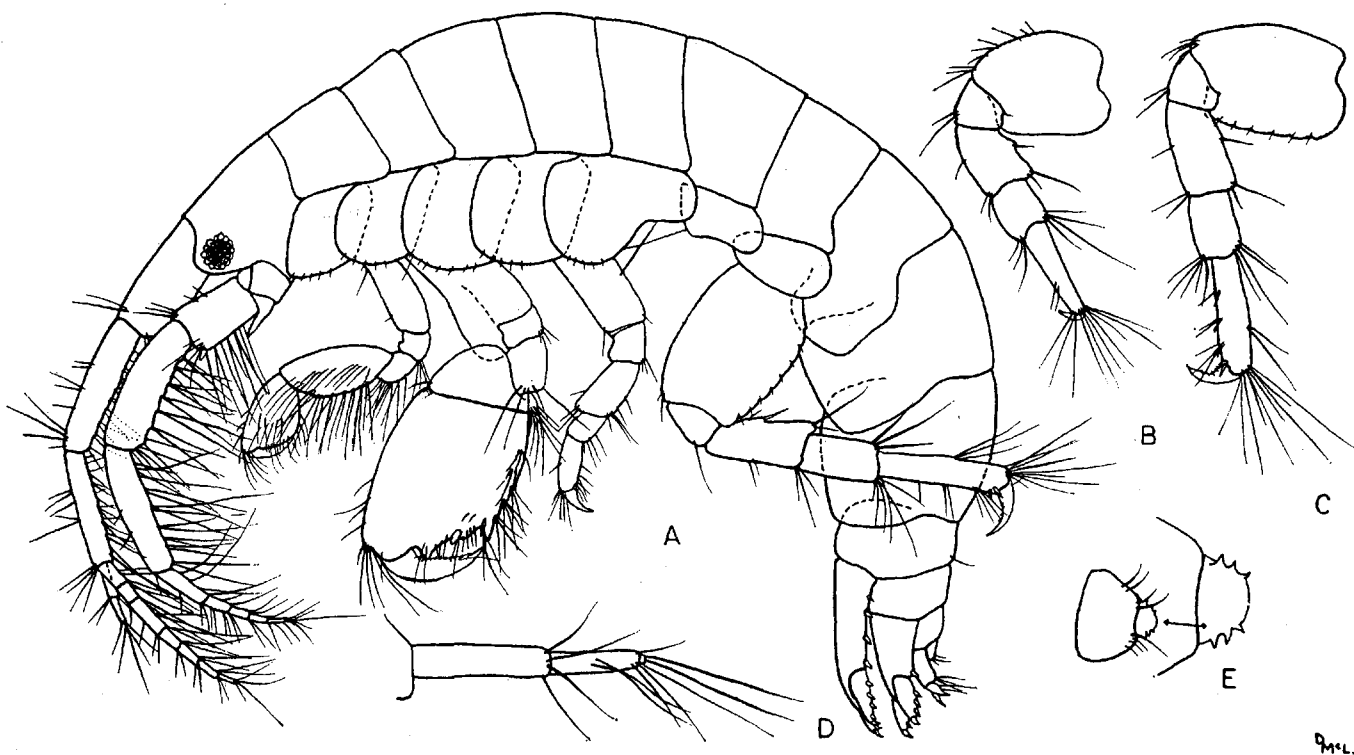


Fig. 6. *Eurystheus ventosa*, n. sp. Female, holotype, 4.0 mm, Barnard sta. 2: A, lateral view; B,C, peraeopods 3, 4; D, accessory flagellum; E, telson.