

Ischyrocerus pelagops

Diagnostic Characters:

Outer ramus of U3 immersed spine, if present, never hooked; distolateral margin of ramus with 0-7 perpendicular, small blunt denticles

Coxa 5 much longer than 6

Coxa 1, $\frac{3}{4}$ as long as coxa 2

Accessory flagellum multi-segmented and elongate

Article 5 of G1 as long as or shorter than article 6

Article 2 of Pereopod 5-7 subovate or broadly rectangular

U3 with 2 fully developed rami

Male G2, normal and sub-chelate

Illustration:

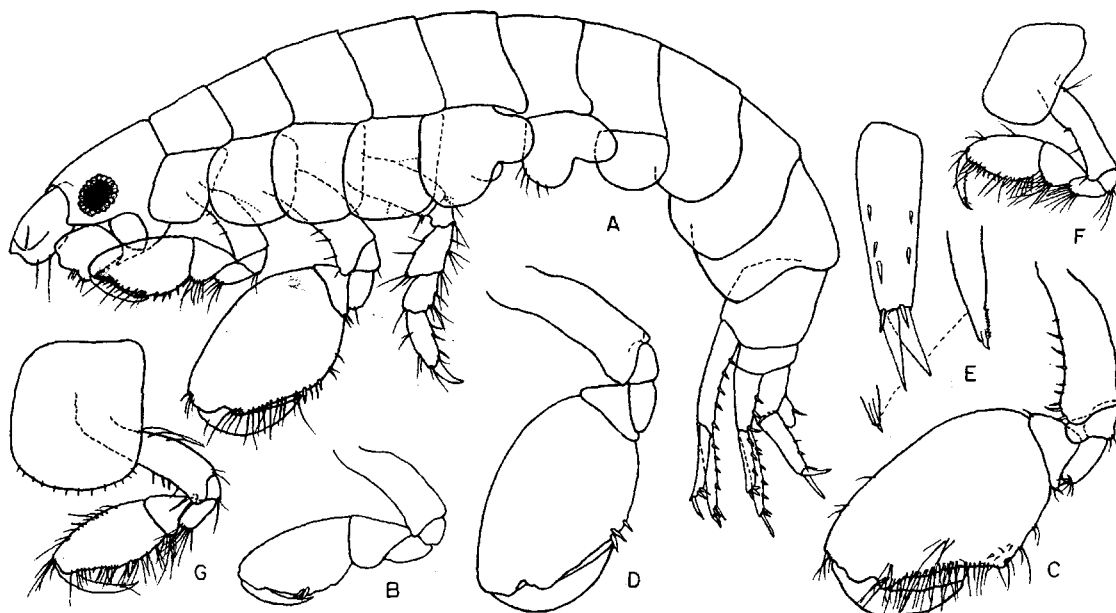


Fig. 25. *Ischyrocerus pelagops*, n. sp. Male, holotype, 3.5 mm, sta. 4870: A, lateral view; B,D, gnathopods 1, 2, minus setae; E, uropod 3. Female, 4.2 mm: F,G, gnathopods 1, 2. Male, 4.5 mm, sta. 4869: C, gnathopod 2.