

# *Eohaustorius sawyeri*

## Diagnostic Characters:

Rostrum moderate to weak  
Coxa 1-4 enlarging, coxa 4 dominate  
Gnathopods feeble and simple  
Pereopod 4 smaller and unlike pereopod 3, reversed in orientation

P5, segment 4 widest distally, 2X length  
Pleon plate 3, postero-dorsal process large, strongly overhanging urosome  
Uropod 3, inner ramus with 2-3 marginal setae  
P4, segment 5, hind lobe normal, width about equal to length  
P7, segment 6 with 3-4 posterior marginal spines groups  
G2, basis, hind margin setose throughout  
P4, segment 5, posterior lobe, distal margin with spine cluster  
P6, segment 4 with lower facial row of 2-3 spine groups  
P6, segment 5 with posterior marginal spine group  
P6 segment 4 subtriangular, widest distally, length <2X width; basis as broad as length

## Illustration:

AMPHIPACIFICA VOL. 11 NO. 1, AUG. 31, 1995 45

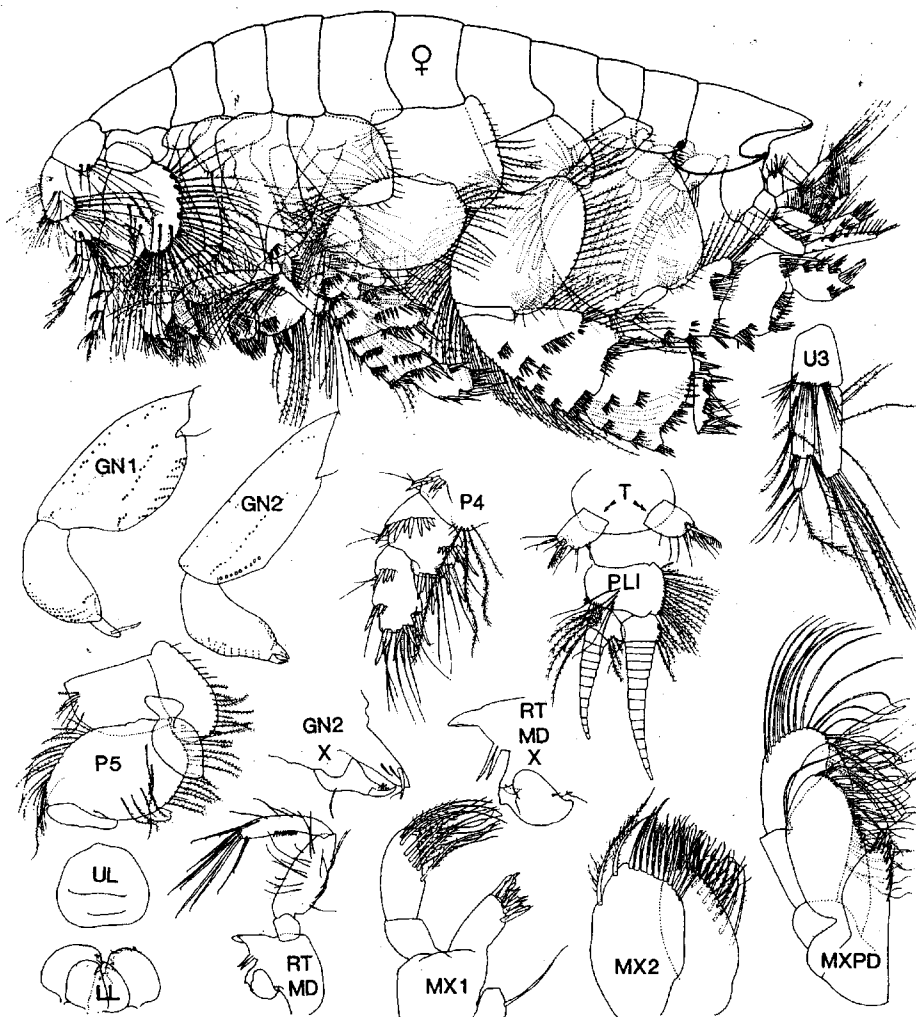


FIG. 6. *Eohaustorius sawyeri* Bosworth, 1973. Female ov (3.2 mm). Off Long Beach, V.I., B.C.