

Protomedeia prudens

females are sp.

Diagnostic Characters:

- Antenna 1 hardly longer than antenna 2
- G1 and G2, male, segment 6 distally tapered, hind margin cusped
- G2, male, dactyl straight and slightly sinuous
- Coxa 5, male, a third deeper than coxa 4,
- G2, female, palm oblique
- Uropod 3, inner ramus nearly as long as the other ramus

Illustration:

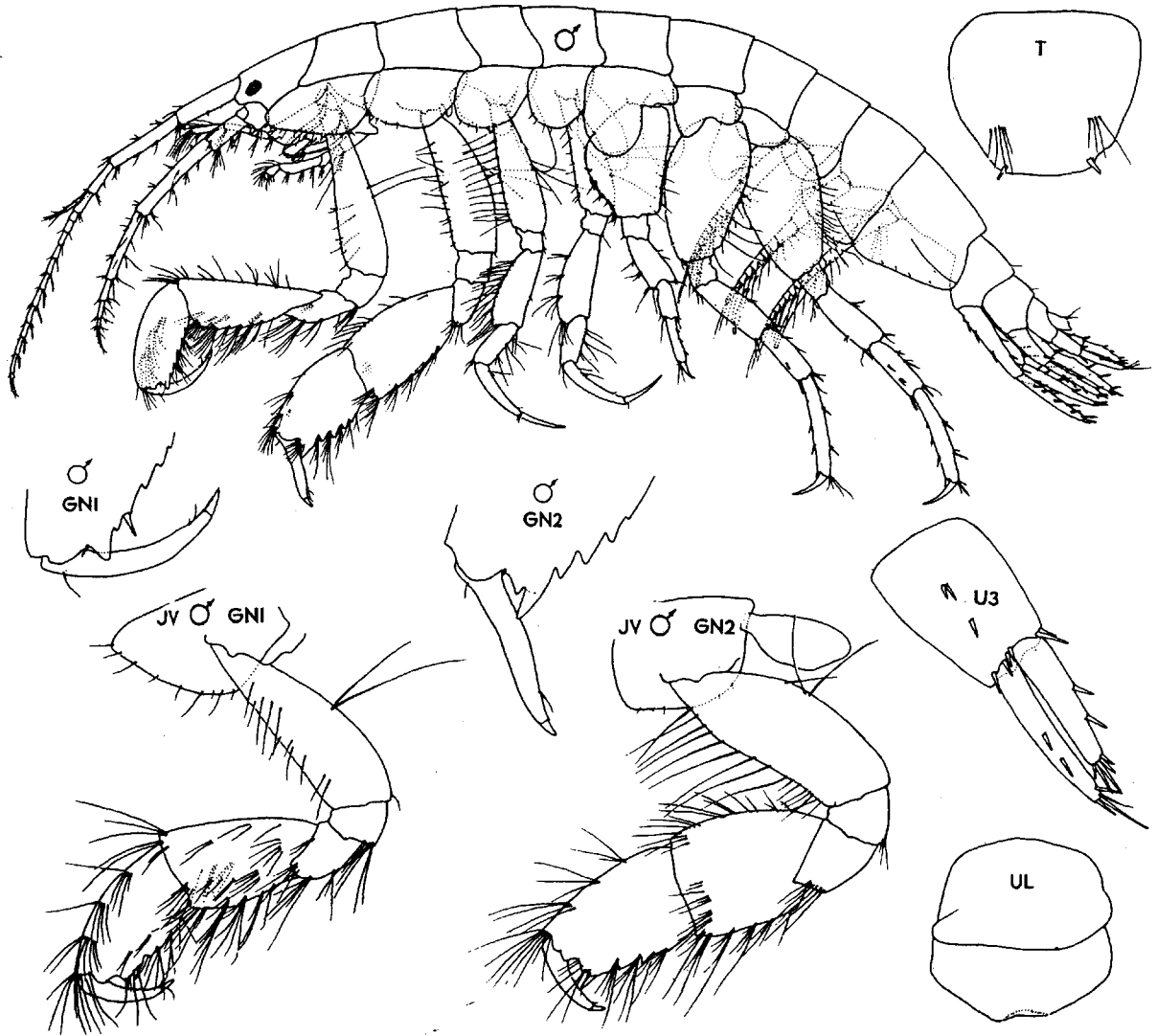


Figure 15. *Protomedeia prudens* Barnard ♂ 6.0 mm, jv ♂ 4.5 mm, Hope Is., Vancouver Is., B.C.